

Product datasheet for **TA321685S**

CNGA2 Rabbit Polyclonal Antibody

Product data:

Product Type:	Primary Antibodies
Applications:	IHC, WB
Recommended Dilution:	WB: 500-2000 WB positive control: 293T cells IHC: 10-50 Positive control: Human esophagus cancer Predicted cell location: Cytoplasm
Reactivity:	Human, Mouse, Rat
Host:	Rabbit
Isotype:	IgG
Clonality:	Polyclonal
Immunogen:	Fusion protein corresponding to a region derived from 475-662 amino acids of human cyclic nucleotide gated channel alpha 2
Formulation:	PBS pH7.3, 0.05% NaN ₃ , 50% glycerol
Purification:	Antigen affinity purification
Conjugation:	Unconjugated
Storage:	Store at -20°C as received.
Stability:	Stable for 12 months from date of receipt.
Predicted Protein Size:	76 kDa
Gene Name:	cyclic nucleotide gated channel alpha 2
Database Link:	NP_005131 Entrez Gene 12789 Mouse Entrez Gene 25411 Rat Entrez Gene 1260 Human Q16280



[View online »](#)

Background: The protein encoded by this gene represents the alpha subunit of a cyclic nucleotide-gated olfactory channel. The encoded protein contains a carboxy-terminal leucine zipper that mediates channel formation. Odorant signal transduction is probably mediated by a G-protein coupled cascade using cAMP as second messenger. The olfactory channel can be shown to be activated by cyclic nucleotides which leads to a depolarization of olfactory sensory neurons.

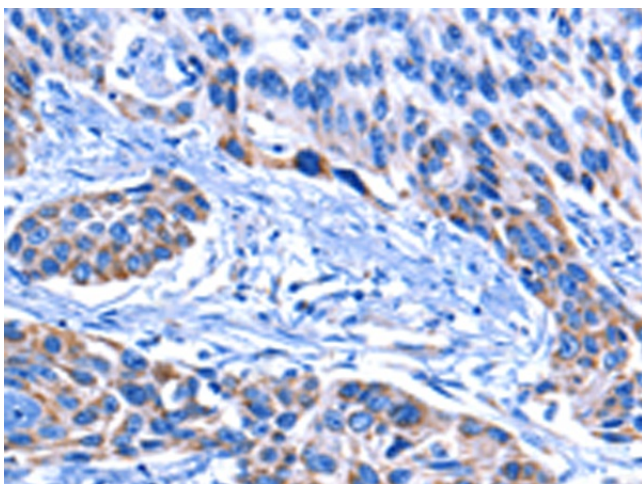
Synonyms: CNCA; CNCA1; CNG2; OCNC1; OCNCa; OCNALPHA

Protein Families: Druggable Genome, Ion Channels: Cyclic nucleotide gated, Transmembrane

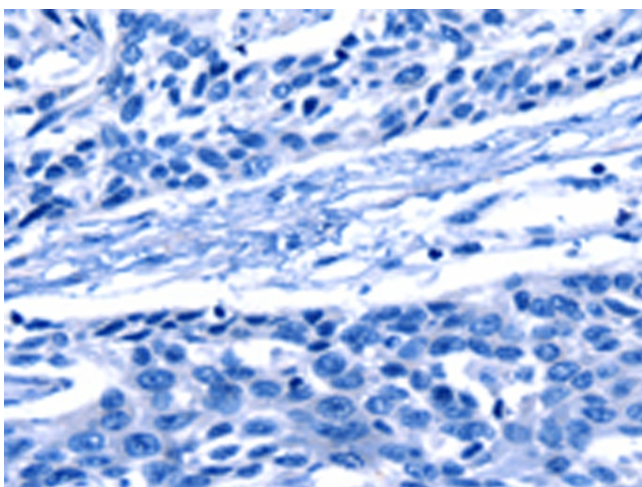
Product images:



Gel: 10%SDS-PAGE
Lysate: 30 μ g
Lane: 293T cells
Primary antibody: [TA321685] (CNGA2 Antibody) at dilution 1/500
Secondary antibody: Goat anti rabbit IgG at 1/8000 dilution
Exposure time: 30 seconds



Immunohistochemistry of paraffin-embedded Human esophagus cancer tissue using [TA321685] (CNGA2 Antibody) at dilution 1/25 (Original magnification: \times 200)



Immunohistochemistry of paraffin-embedded Human esophagus cancer tissue using [TA321685] (CNGA2 Antibody) at dilution 1/25, treated with fusion protein. (Original magnification: $\times 200$)