

## Product datasheet for **TA321681**

### APJ Receptor (APLNR) Rabbit Polyclonal Antibody

#### Product data:

Product Type:	Primary Antibodies
Applications:	IHC, WB
Recommended Dilution:	WB: 200-1000 WB positive control: OP9 cells IHC: 15-50 Positive control: Human brain Predicted cell location: Cytoplasm
Reactivity:	Human, Mouse, Rat
Host:	Rabbit
Isotype:	IgG
Clonality:	Polyclonal
Immunogen:	Fusion protein corresponding to a region derived from 272-380 amino acids of human apelin receptor
Formulation:	PBS pH7.3, 0.05% NaN <sub>3</sub> , 50% glycerol
Concentration:	lot specific
Purification:	Antigen affinity purification
Conjugation:	Unconjugated
Storage:	Store at -20°C as received.
Stability:	Stable for 12 months from date of receipt.
Predicted Protein Size:	43 kDa
Gene Name:	apelin receptor
Database Link:	<a href="#">NP_005152</a> <a href="#">Entrez Gene 23796 Mouse</a> <a href="#">Entrez Gene 83518 Rat</a> <a href="#">Entrez Gene 187 Human</a> <a href="#">P35414</a>



[View online »](#)

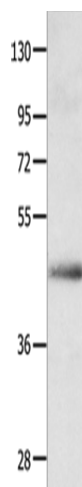
**Background:** This gene encodes a member of the G protein-coupled receptor gene family. The encoded protein is related to the angiotensin receptor; but is actually an apelin receptor that inhibits adenylate cyclase activity and plays a counter-regulatory role against the pressure action of angiotensin II by exerting hypertensive effect. It functions in the cardiovascular and central nervous systems; in glucose metabolism; in embryonic and tumor angiogenesis and as a human immunodeficiency virus (HIV-1) coreceptor. Two transcript variants resulting from alternative splicing have been identified.?

**Synonyms:** AGTRL1; APJ; APJR; HG11

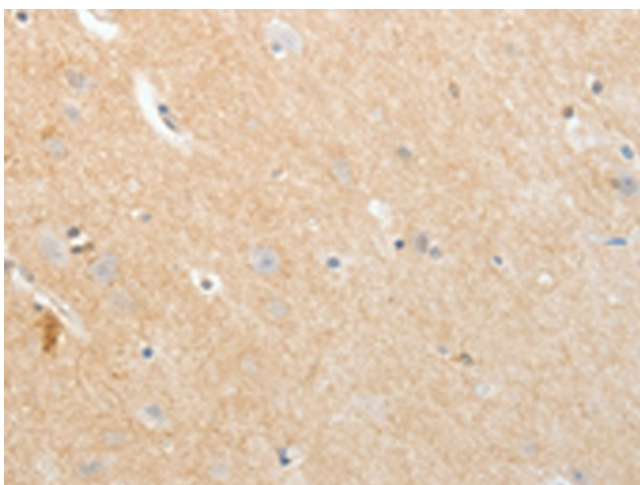
**Protein Families:** Druggable Genome, GPCR, Transmembrane

**Protein Pathways:** Neuroactive ligand-receptor interaction

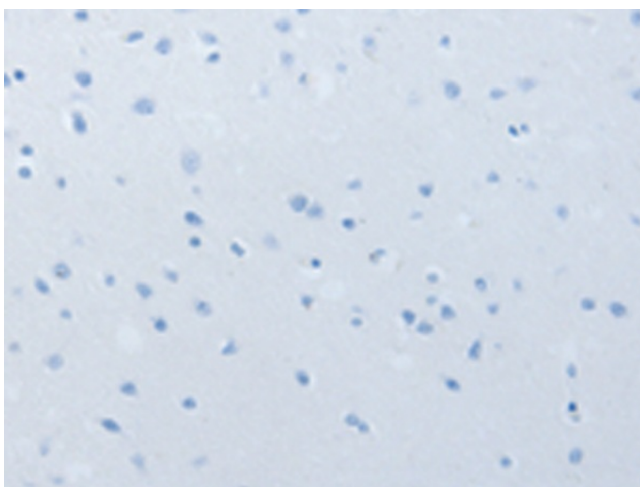
**Product images:**



Gel: 10%SDS-PAGE  
 Lysate: 40 µg  
 Lane: OP9 cells  
 Primary antibody: TA321681 (APLNR Antibody) at dilution 1/250  
 Secondary antibody: Goat anti rabbit IgG at 1/8000 dilution  
 Exposure time: 10 minutes



Immunohistochemistry of paraffin-embedded Human brain tissue using TA321681 (APLNR Antibody) at dilution 1/20 (Original magnification: ×200)



Immunohistochemistry of paraffin-embedded Human brain tissue using TA321681 (APLNR Antibody) at dilution 1/20, treated with fusion protein. (Original magnification:  $\times 200$ )