

## Product datasheet for **TA321677**

### Aquaporin 3 (AQP3) Rabbit Polyclonal Antibody

#### Product data:

Product Type:	Primary Antibodies
Applications:	IHC
Recommended Dilution:	IHC: 25-100 Positive control: Human colorectal cancer Predicted cell location: Cell membrane
Reactivity:	Human, Mouse, Rat
Host:	Rabbit
Isotype:	IgG
Clonality:	Polyclonal
Immunogen:	Synthetic peptide corresponding to a region derived from 278-292 amino acids of Human Aquaporin-3
Formulation:	PBS pH7.3, 0.05% NaN <sub>3</sub> , 50% glycerol
Concentration:	lot specific
Purification:	Antigen affinity purification
Conjugation:	Unconjugated
Storage:	Store at -20°C as received.
Stability:	Stable for 12 months from date of receipt.
Predicted Protein Size:	32 kDa
Gene Name:	aquaporin 3 (Gill blood group)
Database Link:	<a href="#">NP_004916</a> <a href="#">Entrez Gene 11828 Mouse</a> <a href="#">Entrez Gene 65133 Rat</a> <a href="#">Entrez Gene 360 Human</a> <a href="#">Q92482</a>



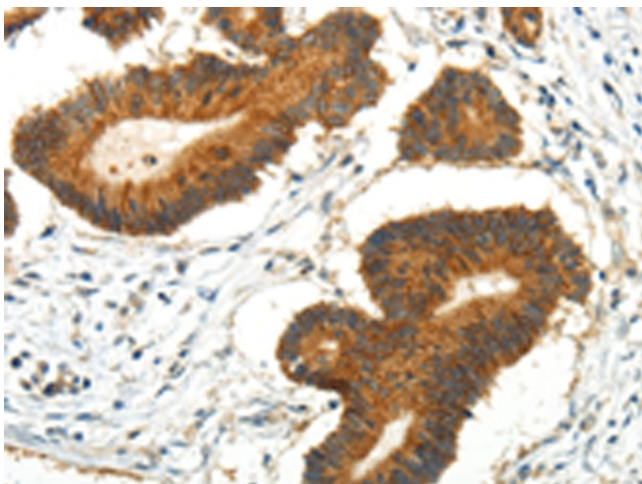
[View online »](#)

**Background:** This gene encodes the water channel protein aquaporin 3. Aquaporins are a family of small integral membrane proteins related to the major intrinsic protein; also known as aquaporin 0. Aquaporin 3 is localized at the basal lateral membranes of collecting duct cells in the kidney. In addition to its water channel function; aquaporin 3 has been found to facilitate the transport of nonionic small solutes such as urea and glycerol; but to a smaller degree. It has been suggested that water channels can be functionally heterogeneous and possess water and solute permeation mechanisms.

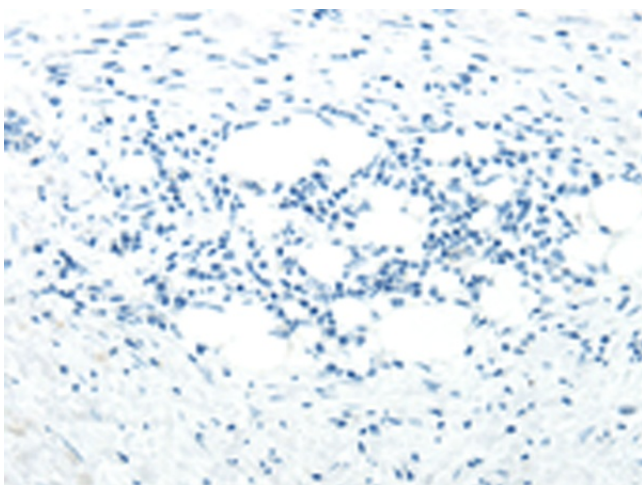
**Synonyms:** AQP-3; GIL

**Protein Families:** Druggable Genome, Transmembrane

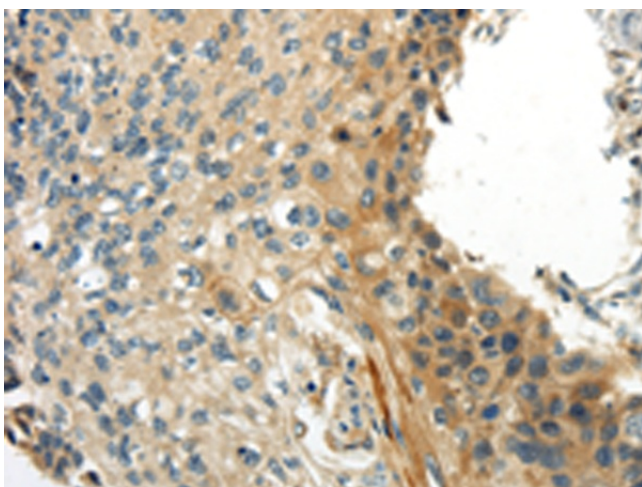
**Product images:**



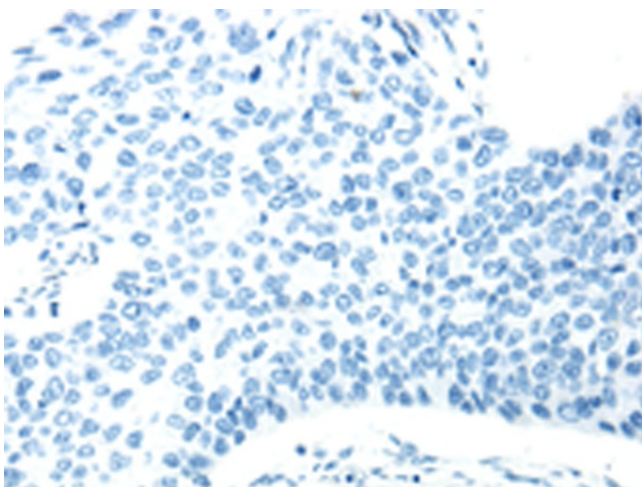
Immunohistochemistry of paraffin-embedded Human colorectal cancer tissue using TA321677 (AQP3 Antibody) at dilution 1/35 (Original magnification:  $\times 200$ )



Immunohistochemistry of paraffin-embedded Human colorectal cancer tissue using TA321677 (AQP3 Antibody) at dilution 1/35, treated with synthetic peptide. (Original magnification:  $\times 200$ )



Immunohistochemistry of paraffin-embedded Human esophagus cancer tissue using TA321677 (AQP3 Antibody) at dilution 1/35 (Original magnification:  $\times 200$ )



Immunohistochemistry of paraffin-embedded Human esophagus cancer tissue using TA321677 (AQP3 Antibody) at dilution 1/35, treated with synthetic peptide. (Original magnification:  $\times 200$ )