

## Product datasheet for **TA321676**

### Peroxiredoxin 6 (PRDX6) Rabbit Polyclonal Antibody

#### Product data:

Product Type:	Primary Antibodies
Applications:	IHC, WB
Recommended Dilution:	WB: 500-2000 WB positive control: Hela, mouse intestinum tenue tissue, 293T and 231 cells IHC: 25-100 Positive control: Human ovarian cancer Predicted cell location: Cytoplasm
Reactivity:	Human, Mouse, Rat
Host:	Rabbit
Isotype:	IgG
Clonality:	Polyclonal
Immunogen:	Fusion protein corresponding to a region derived from 8-224 amino acids of human peroxiredoxin 6
Formulation:	PBS pH7.3, 0.05% NaN <sub>3</sub> , 50% glycerol
Concentration:	lot specific
Purification:	Antigen affinity purification
Conjugation:	Unconjugated
Storage:	Store at -20°C as received.
Stability:	Stable for 12 months from date of receipt.
Predicted Protein Size:	25 kDa
Gene Name:	peroxiredoxin 6
Database Link:	<a href="#">NP_004896</a> <a href="#">Entrez Gene 11758 Mouse</a> <a href="#">Entrez Gene 94167 Rat</a> <a href="#">Entrez Gene 9588 Human</a> <a href="#">P30041</a>



[View online »](#)

**Background:**

The protein encoded by this gene is a member of the thiol-specific antioxidant protein family. This protein is a bifunctional enzyme with two distinct active sites. It is involved in redox regulation of the cell; it can reduce H<sub>2</sub>O<sub>2</sub> and short chain organic; fatty acid; and phospholipid hydroperoxides. It may play a role in the regulation of phospholipid turnover as well as in protection against oxidative injury.?

**Synonyms:**

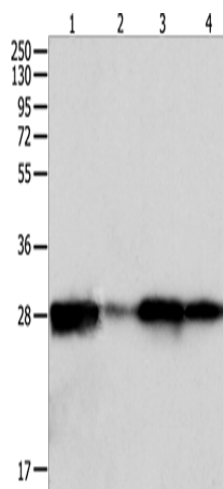
1-Cys; aiPLA2; AOP2; HEL-S-128m; NSGPx; p29; PRX

**Protein Families:**

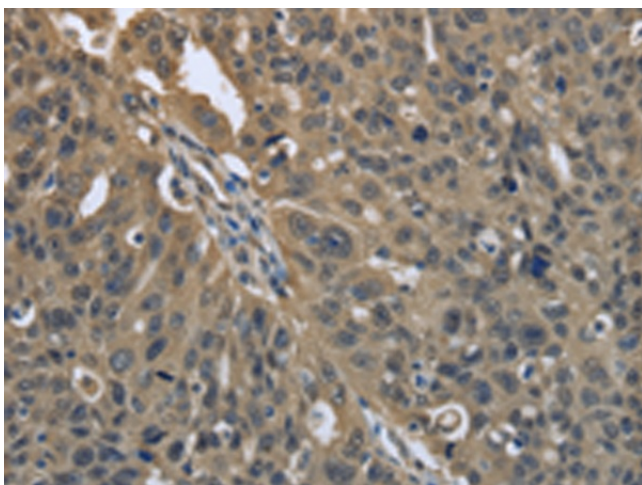
Druggable Genome

**Protein Pathways:**

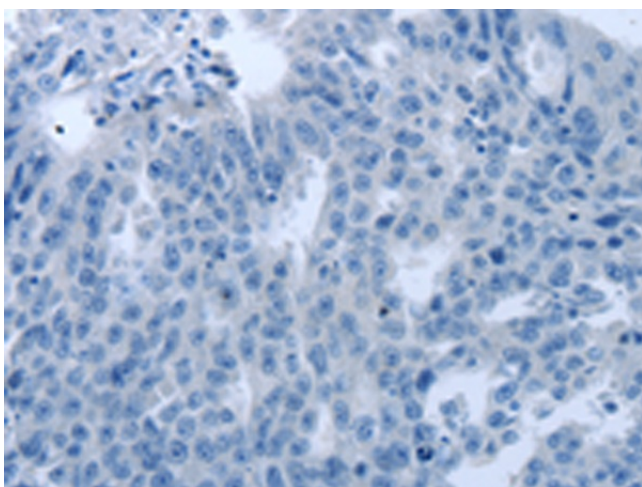
Metabolic pathways, Methane metabolism, Phenylalanine metabolism

**Product images:**


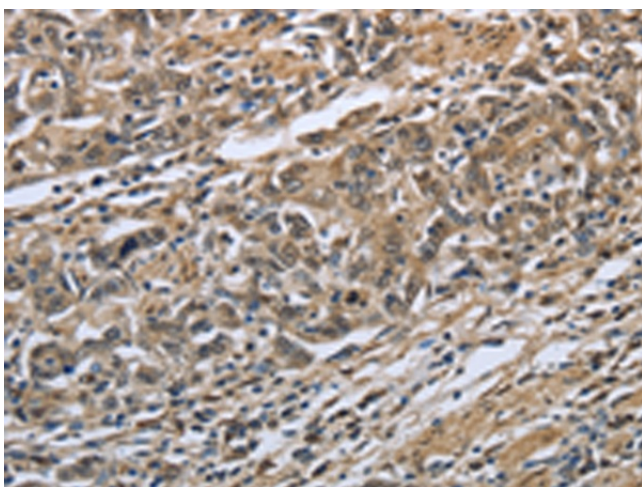
Gel: 12%SDS-PAGE  
 Lysate: 60 µg  
 Lane 1-4: Hela cells  
 mouse intestine tenue tissue  
 293T cells  
 231 cells  
 Primary antibody: TA321676 (PRDX6 Antibody) at dilution 1/300  
 Secondary antibody: Goat anti rabbit IgG at 1/8000 dilution  
 Exposure time: 1 second



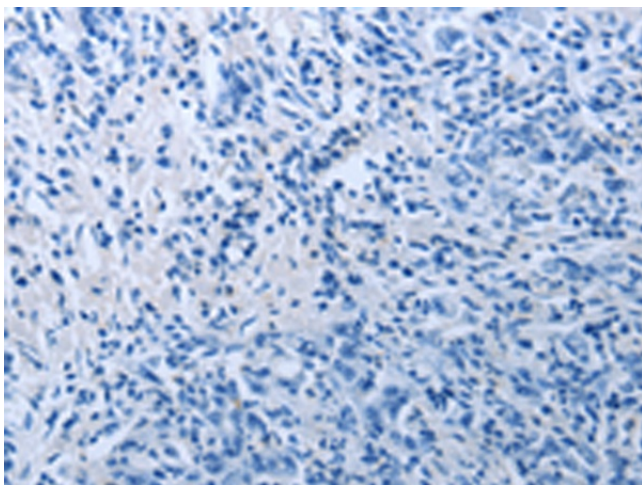
Immunohistochemistry of paraffin-embedded Human ovarian cancer tissue using TA321676 (PRDX6 Antibody) at dilution 1/25 (Original magnification: ×200)



Immunohistochemistry of paraffin-embedded Human ovarian cancer tissue using TA321676 (PRDX6 Antibody) at dilution 1/25, treated with fusion protein. (Original magnification:  $\times 200$ )



Immunohistochemistry of paraffin-embedded Human gastric cancer tissue using TA321676 (PRDX6 Antibody) at dilution 1/25 (Original magnification:  $\times 200$ )



Immunohistochemistry of paraffin-embedded Human gastric cancer tissue using TA321676 (PRDX6 Antibody) at dilution 1/25, treated with fusion protein. (Original magnification:  $\times 200$ )