

Product datasheet for **TA321675S**

Peroxiredoxin 6 (PRDX6) Rabbit Polyclonal Antibody

Product data:

Product Type:	Primary Antibodies
Applications:	IHC, WB
Recommended Dilution:	WB: 500-2000 WB positive control: Hela, 293T, 231 and A549 cells IHC: 25-100 Positive control: Human tonsil Predicted cell location: Cytoplasm
Reactivity:	Human, Mouse, Rat
Host:	Rabbit
Isotype:	IgG
Clonality:	Polyclonal
Immunogen:	Fusion protein corresponding to a region derived from 8-224 amino acids of human peroxiredoxin 6
Formulation:	PBS pH7.3, 0.05% NaN ₃ , 50% glycerol
Purification:	Antigen affinity purification
Conjugation:	Unconjugated
Storage:	Store at -20°C as received.
Stability:	Stable for 12 months from date of receipt.
Predicted Protein Size:	25 kDa
Gene Name:	peroxiredoxin 6
Database Link:	NP_004896 Entrez Gene 11758 Mouse Entrez Gene 94167 Rat Entrez Gene 9588 Human P30041

Background: The protein encoded by this gene is a member of the thiol-specific antioxidant protein family. This protein is a bifunctional enzyme with two distinct active sites. It is involved in redox regulation of the cell; it can reduce H₂O₂ and short chain organic; fatty acid; and phospholipid hydroperoxides. It may play a role in the regulation of phospholipid turnover as well as in protection against oxidative injury.?



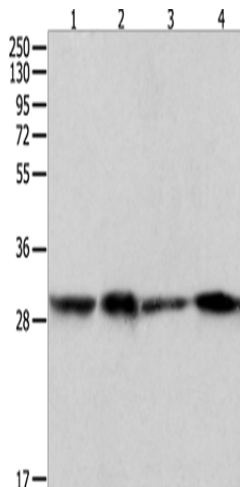
[View online »](#)

Synonyms: 1-Cys; aiPLA2; AOP2; HEL-S-128m; NSGPx; p29; PRX

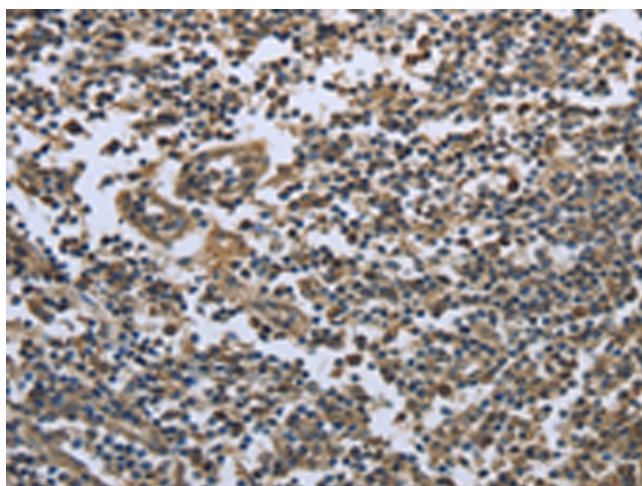
Protein Families: Druggable Genome

Protein Pathways: Metabolic pathways, Methane metabolism, Phenylalanine metabolism

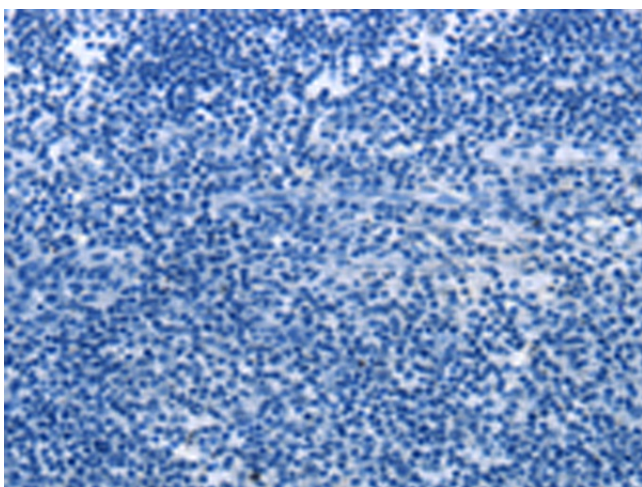
Product images:



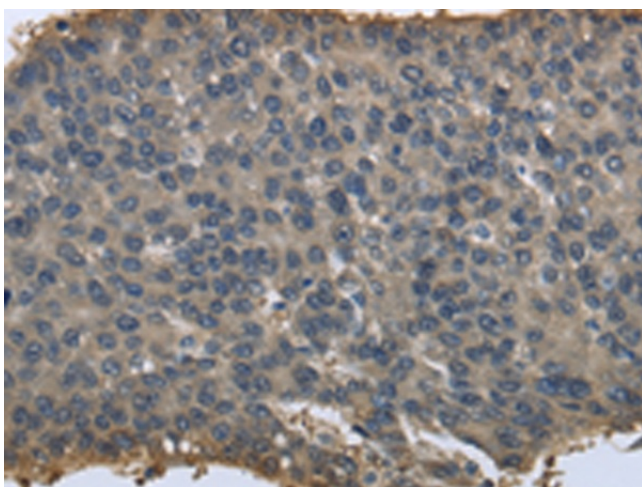
Gel: 12%SDS-PAGE
 Lysate: 60 µg
 Lane 1-4: HeLa cells
 293T cells
 231 cells
 A549 cells
 Primary antibody: [TA321675] (PRDX6 Antibody) at dilution 1/300
 Secondary antibody: Goat anti rabbit IgG at 1/8000 dilution
 Exposure time: 1 second



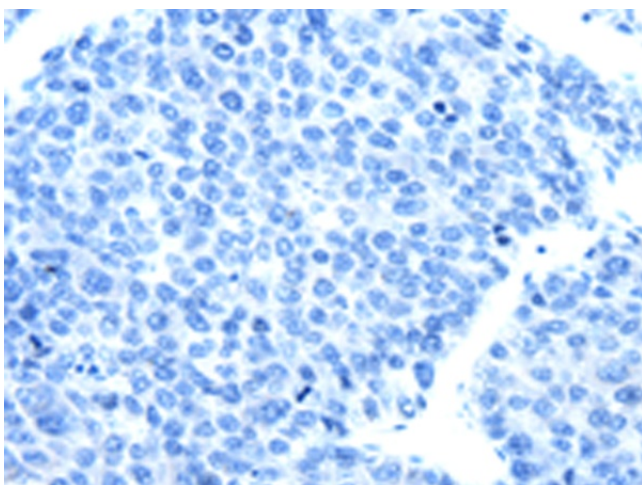
Immunohistochemistry of paraffin-embedded Human tonsil tissue using [TA321675] (PRDX6 Antibody) at dilution 1/25 (Original magnification: ×200)



Immunohistochemistry of paraffin-embedded Human tonsil tissue using [TA321675] (PRDX6 Antibody) at dilution 1/25, treated with fusion protein. (Original magnification: ×200)



Immunohistochemistry of paraffin-embedded Human liver cancer tissue using [TA321675] (PRDX6 Antibody) at dilution 1/25 (Original magnification: ×200)



Immunohistochemistry of paraffin-embedded Human liver cancer tissue using [TA321675] (PRDX6 Antibody) at dilution 1/25, treated with fusion protein. (Original magnification: ×200)