

Product datasheet for **TA321673**

GDF15 Rabbit Polyclonal Antibody

Product data:

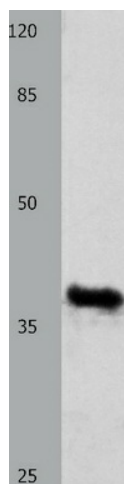
| | |
|-------------------------|--|
| Product Type: | Primary Antibodies |
| Applications: | WB |
| Recommended Dilution: | ELISA: 1:1000-5000, WB: 1:200-1000 |
| Reactivity: | Human, Mouse, Rat |
| Host: | Rabbit |
| Isotype: | IgG |
| Clonality: | Polyclonal |
| Immunogen: | Fusion protein corresponding to a region derived from 195-308 amino acids of human growth differentiation factor 15 |
| Formulation: | PBS pH7.3, 0.05% NaN ₃ , 50% glycerol |
| Concentration: | lot specific |
| Purification: | Antigen affinity purification |
| Conjugation: | Unconjugated |
| Storage: | Store at -20°C as received. |
| Stability: | Stable for 12 months from date of receipt. |
| Predicted Protein Size: | 34 kDa |
| Gene Name: | growth differentiation factor 15 |
| Database Link: | NP_004855 Entrez Gene 23886 Mouse Entrez Gene 29455 Rat Entrez Gene 9518 Human Q99988 |
| Background: | Bone morphogenetic proteins (e.g.; BMP9; MIM 605120) are members of the transforming growth factor-beta (see TGFB1; MIM 190180) superfamily and regulate tissue differentiation and maintenance. They are synthesized as precursor molecules that are processed at a dibasic cleavage site to release C-terminal domains containing a characteristic motif of 7 conserved cysteines in the mature protein. GDF15 mRNA is most abundant in the liver; with lower levels seen in some other tissues. Its expression in liver can be significantly up-regulated in during injury of organs such as liver; kidney; heart and lung. |
| Synonyms: | GDF-15; MIC-1; MIC1; NAG-1; PDF; PLAB; PTGFB |



[View online »](#)

Protein Families: Druggable Genome, Secreted Protein

Product images:



Predicted band size: 34 kDa. Positive control: Mouse liver tissue lysate. Recommended dilution: 1/200-1000. (Gel: 10%SDS-PAGE Lysate: 40 ug Primary antibody: 1/250 dilution Secondary antibody: Goat anti Rabbit IgG - H&L (HRP) at 1/10000 dilution Exposure time: 1 minute)