

Product datasheet for **TA321672**

Adiponectin (ADIPOQ) Rabbit Polyclonal Antibody

Product data:

Product Type:	Primary Antibodies
Applications:	WB
Recommended Dilution:	WB: 200-1000 WB positive control: Human liver cancer tissue
Reactivity:	Human, Mouse
Host:	Rabbit
Isotype:	IgG
Clonality:	Polyclonal
Immunogen:	Synthetic peptide corresponding to a region derived from 230-244 amino acids of Human adiponectin, C1Q and collagen domain containing
Formulation:	PBS pH7.3, 0.05% NaN ₃ , 50% glycerol
Concentration:	lot specific
Purification:	Antigen affinity purification
Conjugation:	Unconjugated
Storage:	Store at -20°C as received.
Stability:	Stable for 12 months from date of receipt.
Predicted Protein Size:	26 kDa
Gene Name:	adiponectin, C1Q and collagen domain containing
Database Link:	NP_004788 Entrez Gene 11450 Mouse Entrez Gene 9370 Human Q15848
Background:	This gene is expressed in adipose tissue exclusively. It encodes a protein with similarity to collagens X and VIII and complement factor C1q. The encoded protein circulates in the plasma and is involved with metabolic and hormonal processes. Mutations in this gene are associated with adiponectin deficiency. Multiple alternatively spliced variants; encoding the same protein; have been identified.
Synonyms:	ACDC; ACRP30; ADIPQTL1; ADPN; APM-1; APM1; GBP28

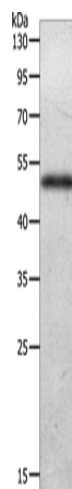


[View online »](#)

Protein Families: Druggable Genome, Secreted Protein

Protein Pathways: Adipocytokine signaling pathway, PPAR signaling pathway, Type II diabetes mellitus

Product images:



Gel: 10%SDS-PAGE

Lysate: 40 µg

Lane: Human liver cancer tissue

Primary antibody: TA321672 (ADIPOQ Antibody)
at dilution 1/300

Secondary antibody: Goat anti rabbit IgG at
1/8000 dilution

Exposure time: 2 minutes