

## Product datasheet for **TA321670**

### SLC33A1 Rabbit Polyclonal Antibody

#### Product data:

Product Type:	Primary Antibodies
Applications:	WB
Recommended Dilution:	WB: 1000-5000 WB positive control: Mouse liver tissue
Reactivity:	Human, Mouse, Rat
Host:	Rabbit
Isotype:	IgG
Clonality:	Polyclonal
Immunogen:	Synthetic peptide corresponding to a region derived from 240-254 amino acids of human solute carrier family 33 (acetyl-CoA transporter), member 1
Formulation:	PBS pH7.3, 0.05% NaN <sub>3</sub> , 50% glycerol
Concentration:	lot specific
Purification:	Antigen affinity purification
Conjugation:	Unconjugated
Storage:	Store at -20°C as received.
Stability:	Stable for 12 months from date of receipt.
Predicted Protein Size:	61 kDa
Gene Name:	solute carrier family 33 member 1
Database Link:	<a href="#">NP_004724</a> <a href="#">Entrez Gene 11416 Mouse</a> <a href="#">Entrez Gene 64018 Rat</a> <a href="#">Entrez Gene 9197 Human</a> <a href="#">O00400</a>
Background:	The protein encoded by this gene is required for the formation of O-acetylated (Ac) gangliosides. The encoded protein is predicted to contain 6 to 10 transmembrane domains; and a leucine zipper motif in transmembrane domain III. Defects in this gene have been reported to cause spastic paraplegia autosomal dominant type 42 (SPG42) in one Chinese family; but not in similar patients of European descent. Two transcript variants encoding the same protein have been found for this gene.
Synonyms:	ACATN; AT-1; AT1; CCHLND; SPG42

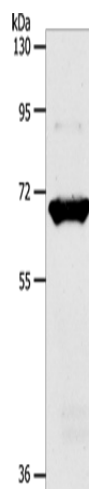


[View online »](#)

Protein Families: Transmembrane

Protein Pathways: Glycosphingolipid biosynthesis - ganglio series, Metabolic pathways

### Product images:



Gel: 10%SDS-PAGE  
Lysate: 40  $\mu$ g  
Lane: Mouse liver tissue  
Primary antibody: TA321670 (SLC33A1 Antibody)  
at dilution 1/1100  
Secondary antibody: Goat anti rabbit IgG at  
1/8000 dilution  
Exposure time: 1 minute