

## Product datasheet for **TA321668**

### MCT2 (SLC16A7) Rabbit Polyclonal Antibody

#### Product data:

Product Type:	Primary Antibodies
Applications:	IHC, WB
Recommended Dilution:	WB: 500-2000 WB positive control: Human abdominal interstitial sarcoma tissue, A549, 293T and HepG2 cell lysates IHC: 50-300 Positive control: Human liver cancer Predicted cell location: Cytoplasm
Reactivity:	Human
Host:	Rabbit
Isotype:	IgG
Clonality:	Polyclonal
Immunogen:	Synthetic peptide peptide corresponding to a region derived from 465-478 amino acids of human solute carrier family 16, member 7 (monocarboxylic acid transporter 2)
Formulation:	PBS pH7.3, 0.05% NaN <sub>3</sub> , 50% glycerol
Concentration:	lot specific
Purification:	Antigen affinity purification
Conjugation:	Unconjugated
Storage:	Store at -20°C as received.
Stability:	Stable for 12 months from date of receipt.
Predicted Protein Size:	52 kDa
Gene Name:	solute carrier family 16 member 7
Database Link:	<a href="#">NP_004722</a> <a href="#">Entrez Gene 9194 Human</a> <a href="#">O60669</a>



[View online »](#)

**Background:**

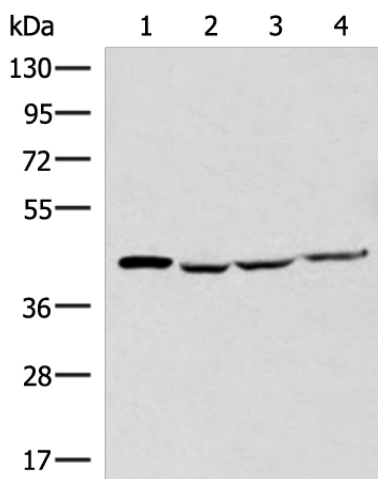
This gene is a member of the monocarboxylate transporter family. Members in this family transport metabolites; such as lactate; pyruvate; and ketone bodies. The protein encoded by this gene catalyzes the proton-linked transport of monocarboxylates and has the highest affinity for pyruvate. This protein has been reported to be more highly expressed in prostate and colorectal cancer specimens when compared to control specimens. Alternative splicing results in multiple transcript variants.

**Synonyms:**

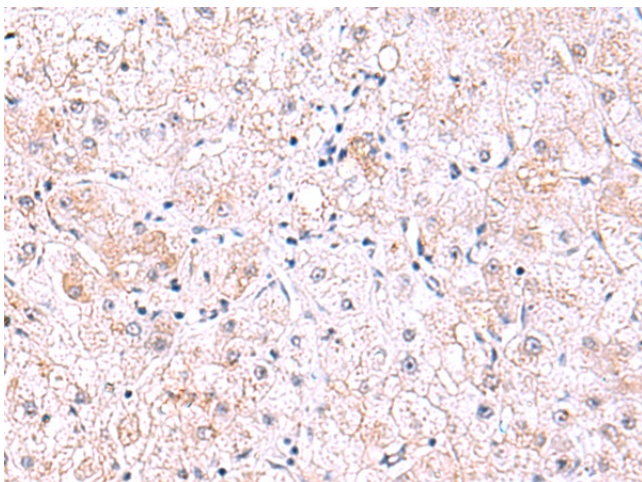
MCT2

**Protein Families:**

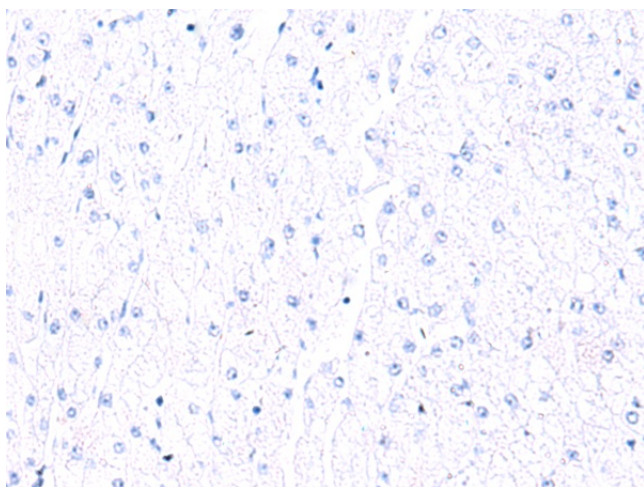
Transmembrane

**Product images:**

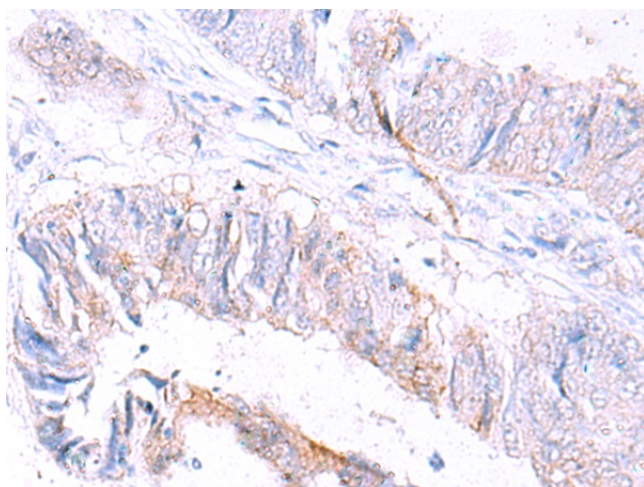
Gel: 8%SDS-PAGE  
Lysate: 40 µg  
Lane 1-3: A549  
293T and HepG2 cell lysates  
Primary antibody: TA321668 (SLC16A7 Antibody)  
at dilution 1/550  
Secondary antibody: Goat anti rabbit IgG at  
1/8000 dilution  
Exposure time: 10 seconds



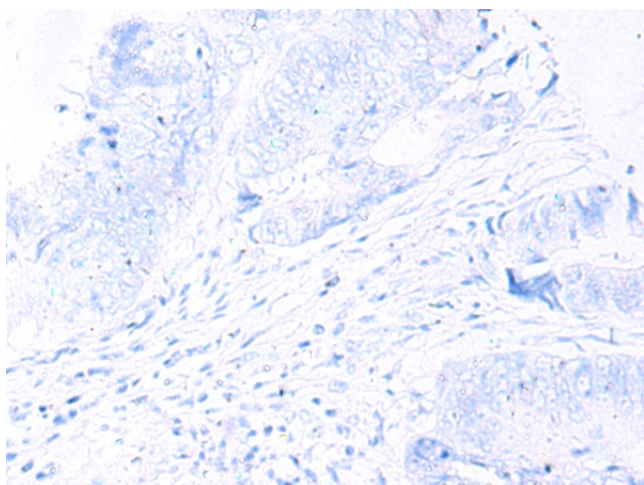
Immunohistochemistry of paraffin-embedded  
Human colorectal cancer tissue using TA321668  
(SLC16A7 Antibody) at dilution 1/50 (Original  
magnification: ×200)



Immunohistochemistry of paraffin-embedded Human colorectal cancer tissue using TA321668 (SLC16A7 Antibody) at dilution 1/50, treated with synthetic peptide. (Original magnification: ×200)



Immunohistochemistry of paraffin-embedded Human tonsil tissue using TA321668 (SLC16A7 Antibody) at dilution 1/50 (Original magnification: ×200)



Immunohistochemistry of paraffin-embedded Human tonsil tissue using TA321668 (SLC16A7 Antibody) at dilution 1/50, treated with synthetic peptide. (Original magnification: ×200)