

## Product datasheet for **TA321665S**

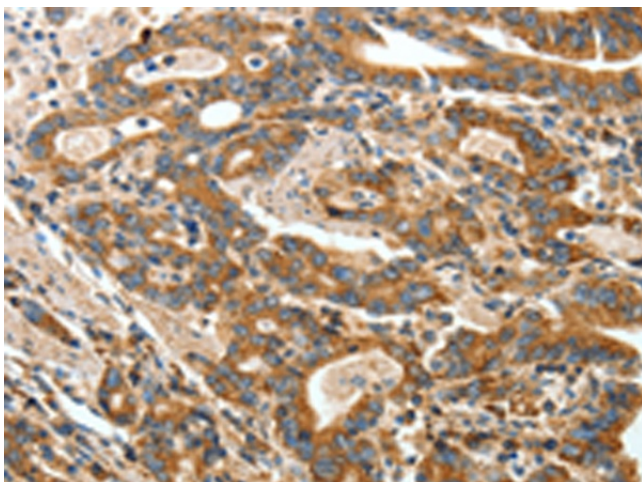
### ANGPTL1 Rabbit Polyclonal Antibody

#### Product data:

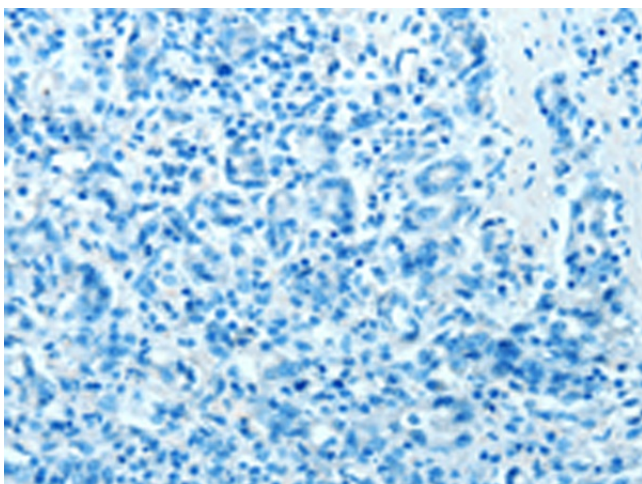
Product Type:	Primary Antibodies
Applications:	IHC
Recommended Dilution:	IHC: 50-200 Positive control: Human gastric cancer Predicted cell location: Cytoplasm
Reactivity:	Human, Mouse
Host:	Rabbit
Isotype:	IgG
Clonality:	Polyclonal
Immunogen:	Fusion protein corresponding to a region derived from 143-491 amino acids of human angiotensin-like 1
Formulation:	PBS pH7.3, 0.05% NaN <sub>3</sub> , 50% glycerol
Purification:	Antigen affinity purification
Conjugation:	Unconjugated
Storage:	Store at -20°C as received.
Stability:	Stable for 12 months from date of receipt.
Gene Name:	angiotensin like 1
Database Link:	<a href="#">NP_004664</a> <a href="#">Entrez Gene 72713 Mouse</a> <a href="#">Entrez Gene 9068 Human</a> <a href="#">O95841</a>
Background:	Angiotensins are members of the vascular endothelial growth factor family and the only known growth factors largely specific for vascular endothelium. Angiotensin-1, angiotensin-2, and angiotensin-4 participate in the formation of blood vessels. The protein encoded by this gene is another member of the angiotensin family that is widely expressed in adult tissues with mRNA levels highest in highly vascularized tissues. This protein was found to be a secretory protein that does not act as an endothelial cell mitogen in vitro.?
Synonyms:	ANG3; ANGPT3; AngY; ARP1; dJ595C2.2; UNQ162
Protein Families:	Druggable Genome, Secreted Protein



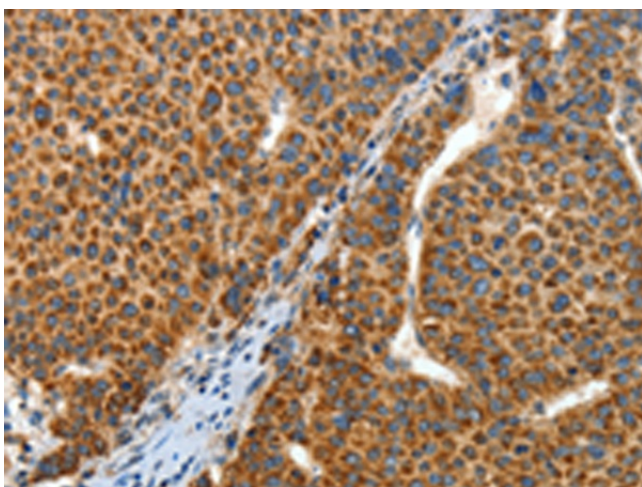
[View online »](#)

**Product images:**

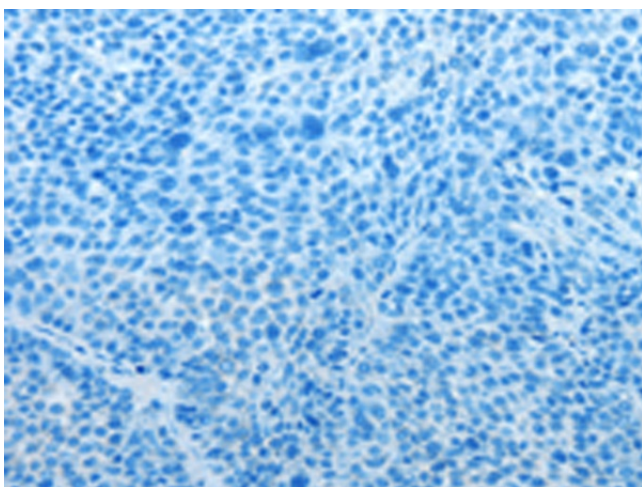
Immunohistochemistry of paraffin-embedded Human gastric cancer tissue using [TA321665] (ANGPTL1 Antibody) at dilution 1/40 (Original magnification:  $\times 200$ )



Immunohistochemistry of paraffin-embedded Human gastric cancer tissue using [TA321665] (ANGPTL1 Antibody) at dilution 1/40, treated with fusion protein. (Original magnification:  $\times 200$ )



Immunohistochemistry of paraffin-embedded Human liver cancer tissue using [TA321665] (ANGPTL1 Antibody) at dilution 1/40 (Original magnification:  $\times 200$ )



Immunohistochemistry of paraffin-embedded Human liver cancer tissue using [TA321665] (ANGPTL1 Antibody) at dilution 1/40, treated with fusion protein. (Original magnification:  $\times 200$ )