

Product datasheet for **TA321664**

VNN1 Rabbit Polyclonal Antibody

Product data:

Product Type:	Primary Antibodies
Applications:	IF
Recommended Dilution:	IF: 100-500 Positive control: HepG2 and NCCIT cell Predicted cell location: Cytoplasm
Reactivity:	Human
Host:	Rabbit
Isotype:	IgG
Clonality:	Polyclonal
Immunogen:	Synthetic peptide corresponding to a region derived from 483-496 amino acids of human vanin 1
Formulation:	PBS pH7.3, 0.05% NaN ₃ , 50% glycerol
Concentration:	lot specific
Purification:	Antigen affinity purification
Conjugation:	Unconjugated
Storage:	Store at -20°C as received.
Stability:	Stable for 12 months from date of receipt.
Gene Name:	vanin 1
Database Link:	NP_004657 Entrez Gene 8876 Human O95497



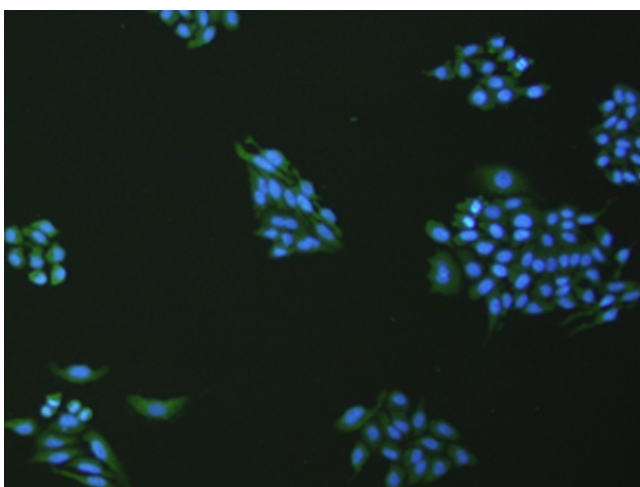
[View online »](#)

Background: This gene encodes a member of the vanin family of proteins; which share extensive sequence similarity with each other; and also with biotinidase. The family includes secreted and membrane-associated proteins; a few of which have been reported to participate in hematopoietic cell trafficking. No biotinidase activity has been demonstrated for any of the vanin proteins; however; they possess pantetheinase activity; which may play a role in oxidative-stress response. This protein; like its mouse homolog; is likely a GPI-anchored cell surface molecule. The mouse protein is expressed by the perivascular thymic stromal cells and regulates migration of T-cell progenitors to the thymus. This gene lies in close proximity to; and in the same transcriptional orientation as; two other vanin genes on chromosome 6q23-q24.

Synonyms: HDLCQ8; Tiff66

Protein Pathways: Pantothenate and CoA biosynthesis

Product images:



The image is immunofluorescence of HepG2 cell using TA31664 (VNN1 Antibody) at dilution 1/100/200.