

Product datasheet for **TA321663**

TRAF6 Rabbit Polyclonal Antibody

Product data:

Product Type:	Primary Antibodies
Applications:	IHC, WB
Recommend Dilution:	ELISA: 1:1000-2000, WB: 1:200-1000, IHC: 1:25-100
Reactivity:	Human, Mouse, Rat
Host:	Rabbit
Isotype:	IgG
Clonality:	Polyclonal
Immunogen:	Fusion protein corresponding to a region derived from 350-522 amino acids of human TNF receptor-associated factor 6, E3 ubiquitin protein ligase
Formulation:	PBS pH7.3, 0.05% NaN ₃ , 50% glycerol
Concentration:	lot specific
Purification:	Antigen affinity purification
Storage:	Store at -20°C as received.
Stability:	Stable for 12 months from date of receipt.
Predicted Protein Size:	60 kDa
Gene Name:	TNF receptor associated factor 6
Database Link:	NP_004611 Entrez Gene 22034 Mouse Entrez Gene 311245 Rat Entrez Gene 7189 Human



[View online »](#)

Background:

The protein encoded by this gene is a member of the TNF receptor associated factor (TRAF) protein family. TRAF proteins are associated with; and mediate signal transduction from; members of the TNF receptor superfamily. This protein mediates signaling from members of the TNF receptor superfamily as well as the Toll/IL-1 family. Signals from receptors such as CD40; TNFSF11/RANCE and IL-1 have been shown to be mediated by this protein. This protein also interacts with various protein kinases including IRAK1/IRAK; SRC and PKCzeta; which provides a link between distinct signaling pathways. This protein functions as a signal transducer in the NF-kappaB pathway that activates I kappaB kinase (IKK) in response to proinflammatory cytokines. The interaction of this protein with UBE2N/UBC13; and UBE2V1/UEV1A; which are ubiquitin conjugating enzymes catalyzing the formation of polyubiquitin chains; has been found to be required for IKK activation by this protein. This protein also interacts with the transforming growth factor (TGF) beta receptor complex and is required for Smad-independent activation of the JNK and p38 kinases.

Synonyms:

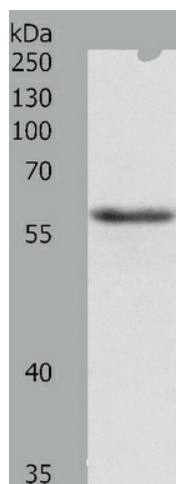
MGC:3310; RNF85

Protein Families:

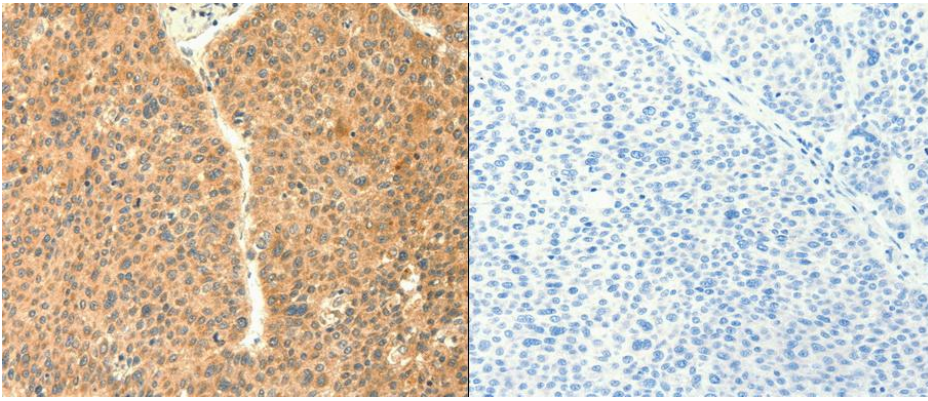
Druggable Genome

Protein Pathways:

Endocytosis, MAPK signaling pathway, Neurotrophin signaling pathway, NOD-like receptor signaling pathway, Pathways in cancer, RIG-I-like receptor signaling pathway, Small cell lung cancer, Toll-like receptor signaling pathway, Ubiquitin mediated proteolysis

Product images:

Predicted band size: 60 kDa. Positive control: A549 cell lysate. Recommended dilution: 1/200-1000. (Gel: 10%SDS-PAGE Lysate: 40 ug per lane Primary antibody: 1/300 dilution Secondary antibody: Goat anti Rabbit IgG - H&L (HRP) at 1/10000 dilution Exposure time: 10 minutes)



Predicted cell location: Cytoplasm. Positive control: Human liver cancer tissue. Recommended dilution: 1/25-100 The image on the left is immunohistochemistry of paraffin-embedded human liver cancer tissue using TRAF6 antibody at dilution 1/20, on the right is treated with the fusion protein. (Original magnification:x200)