

Product datasheet for **TA321661**

Transglutaminase 2 (TGM2) Rabbit Polyclonal Antibody

Product data:

Product Type:	Primary Antibodies
Applications:	IHC, WB
Recommended Dilution:	WB: 200-1000 WB positive control: Lovo and hela cells, human liver cancer tissue IHC: 25-100 Positive control: Human cervical cancer Predicted cell location: Cytoplasm
Reactivity:	Human, Mouse
Host:	Rabbit
Isotype:	IgG
Clonality:	Polyclonal
Immunogen:	Fusion protein corresponding to C terminal 250 amino acids of human transglutaminase 2 (C polypeptide, protein-glutamine-gamma-glutamyltransferase)
Formulation:	PBS pH7.3, 0.05% NaN ₃ , 50% glycerol
Concentration:	lot specific
Purification:	Antigen affinity purification
Conjugation:	Unconjugated
Storage:	Store at -20°C as received.
Stability:	Stable for 12 months from date of receipt.
Predicted Protein Size:	77 kDa
Gene Name:	transglutaminase 2
Database Link:	NP_004604 Entrez Gene 21817 Mouse Entrez Gene 7052 Human P21980



[View online »](#)

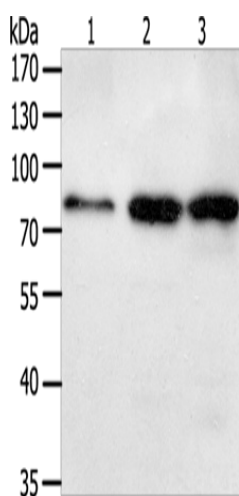
Background: Transglutaminases are enzymes that catalyze the crosslinking of proteins by epsilon-gamma glutamyl lysine isopeptide bonds. While the primary structure of transglutaminases is not conserved; they all have the same amino acid sequence at their active sites and their activity is calcium-dependent. The protein encoded by this gene acts as a monomer; is induced by retinoic acid; and appears to be involved in apoptosis. Finally; the encoded protein is the autoantigen implicated in celiac disease. Two transcript variants encoding different isoforms have been found for this gene.

Synonyms: G-ALPHA-h; GNAH; HEL-S-45; TG2; TGC

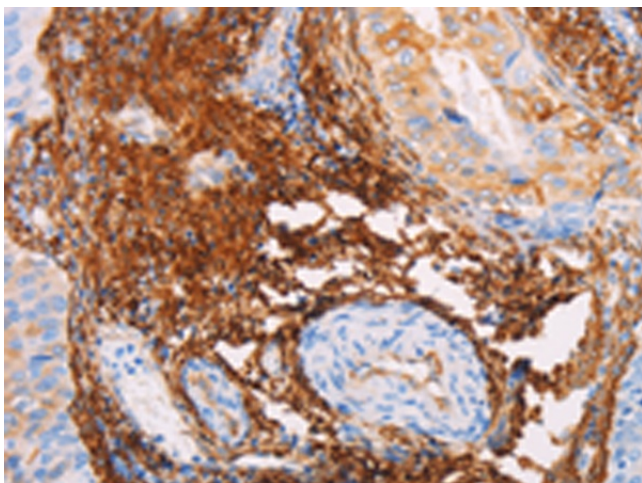
Protein Families: Druggable Genome

Protein Pathways: Huntington's disease

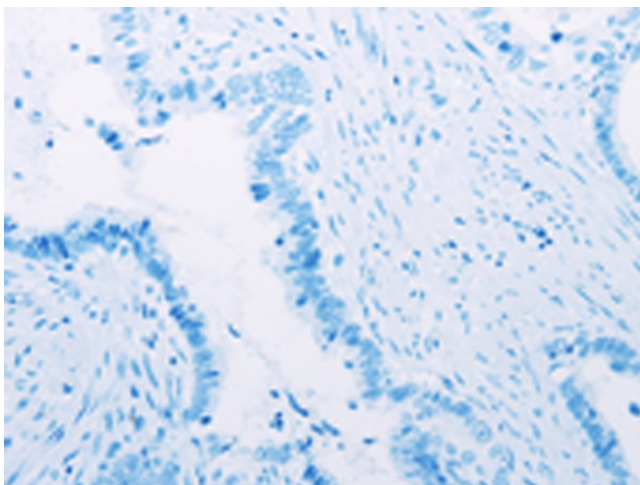
Product images:



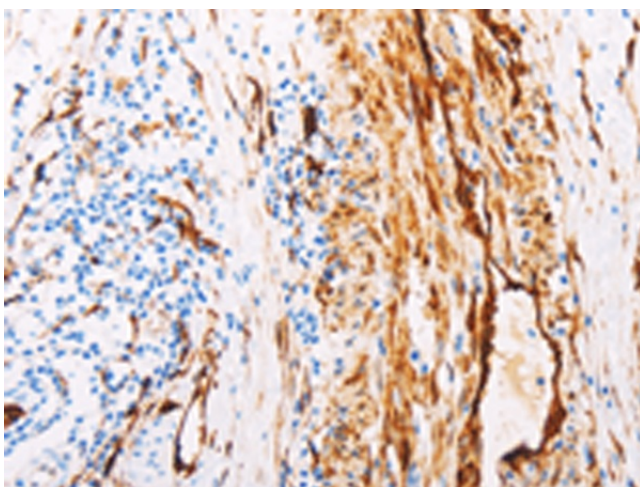
Gel: 10%SDS-PAGE
Lysate: 50 µg
Lane 1-3: Lovo cells
hela cells
human liver cancer tissue
Primary antibody: TA321661 (TGM2 Antibody) at dilution 1/150
Secondary antibody: Goat anti rabbit IgG at 1/8000 dilution
Exposure time: 1 minute



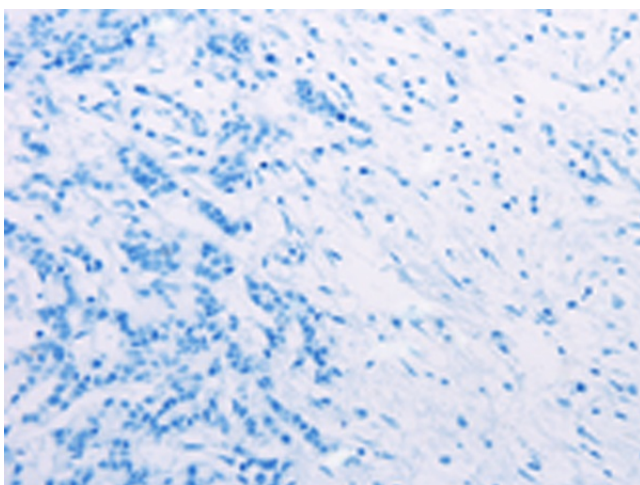
Immunohistochemistry of paraffin-embedded Human cervical cancer tissue using TA321661 (TGM2 Antibody) at dilution 1/15 (Original magnification: ×200)



Immunohistochemistry of paraffin-embedded Human cervical cancer tissue using TA321661 (TGM2 Antibody) at dilution 1/15, treated with fusion protein. (Original magnification: ×200)



Immunohistochemistry of paraffin-embedded Human colon cancer tissue using TA321661 (TGM2 Antibody) at dilution 1/15 (Original magnification: ×200)



Immunohistochemistry of paraffin-embedded Human colon cancer tissue using TA321661 (TGM2 Antibody) at dilution 1/15, treated with fusion protein. (Original magnification: ×200)