

## Product datasheet for **TA321660S**

### Transglutaminase 2 (TGM2) Rabbit Polyclonal Antibody

#### Product data:

Product Type:	Primary Antibodies
Applications:	IHC, WB
Recommended Dilution:	WB: 200-1000 WB positive control: Lovo and hela cells, human liver cancer and fetal liver tissue IHC: 15-50 Positive control: Human cervical cancer Predicted cell location: Cytoplasm
Reactivity:	Human, Mouse
Host:	Rabbit
Isotype:	IgG
Clonality:	Polyclonal
Immunogen:	Fusion protein corresponding to C terminal 250 amino acids of human transglutaminase 2 (C polypeptide, protein-glutamine-gamma-glutamyltransferase)
Formulation:	PBS pH7.3, 0.05% NaN <sub>3</sub> , 50% glycerol
Purification:	Antigen affinity purification
Conjugation:	Unconjugated
Storage:	Store at -20°C as received.
Stability:	Stable for 12 months from date of receipt.
Predicted Protein Size:	77 kDa
Gene Name:	transglutaminase 2
Database Link:	<a href="#">NP_004604</a> <a href="#">Entrez Gene 21817 Mouse</a> <a href="#">Entrez Gene 7052 Human</a> <a href="#">P21980</a>



[View online »](#)

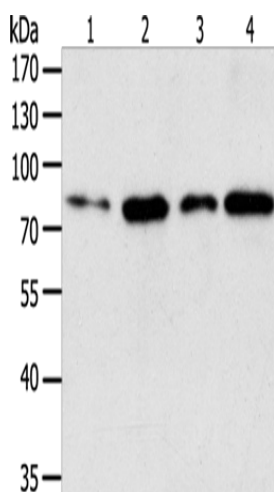
**Background:** Transglutaminases are enzymes that catalyze the crosslinking of proteins by epsilon-gamma glutamyl lysine isopeptide bonds. While the primary structure of transglutaminases is not conserved; they all have the same amino acid sequence at their active sites and their activity is calcium-dependent. The protein encoded by this gene acts as a monomer; is induced by retinoic acid; and appears to be involved in apoptosis. Finally; the encoded protein is the autoantigen implicated in celiac disease. Two transcript variants encoding different isoforms have been found for this gene.

**Synonyms:** G-ALPHA-h; GNAH; HEL-S-45; TG2; TGC

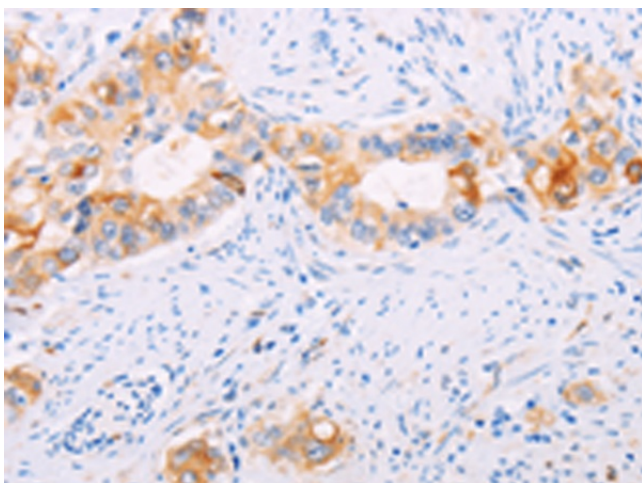
**Protein Families:** Druggable Genome

**Protein Pathways:** Huntington's disease

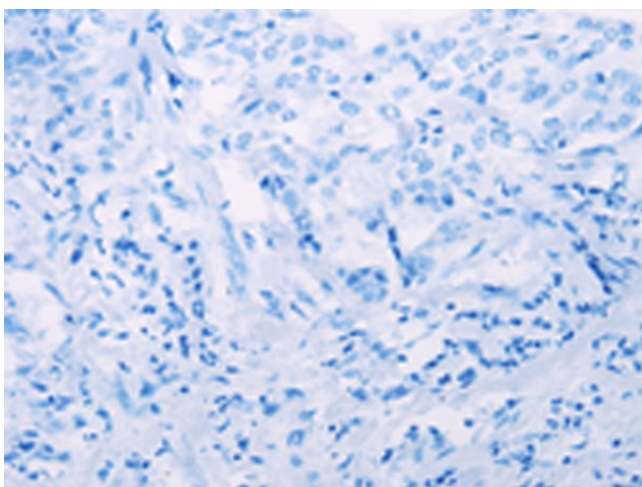
### Product images:



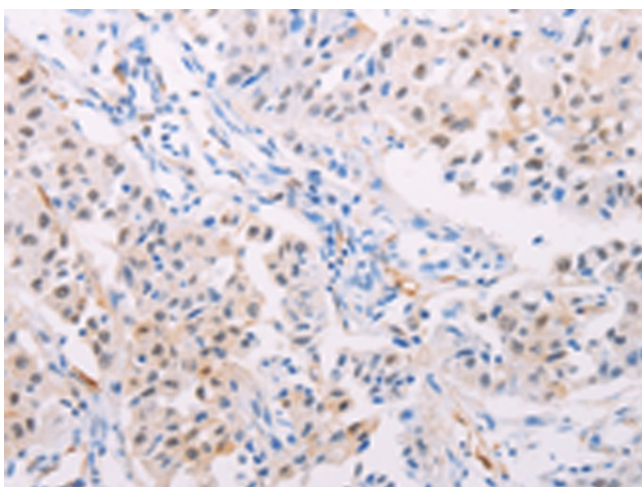
Gel: 10%SDS-PAGE  
Lysate: 50 µg  
Lane 1-4: Lovo cells  
hela cells  
human liver cancer tissue  
Human fetal liver tissue  
Primary antibody: [TA321660] (TGM2 Antibody) at dilution 1/150  
Secondary antibody: Goat anti rabbit IgG at 1/8000 dilution  
Exposure time: 1 minute



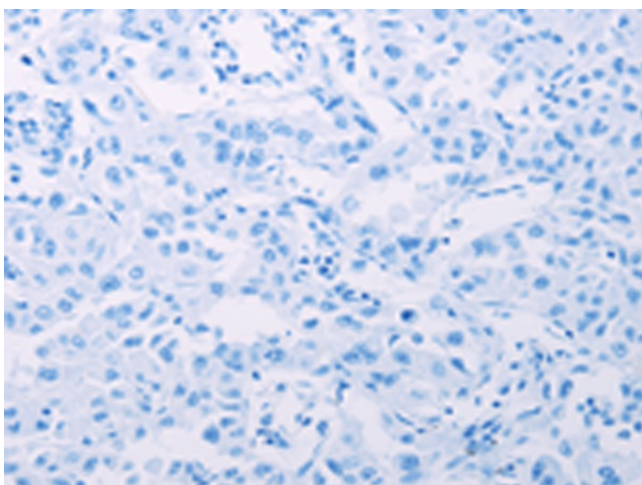
Immunohistochemistry of paraffin-embedded Human cervical cancer tissue using [TA321660] (TGM2 Antibody) at dilution 1/15 (Original magnification: ×200)



Immunohistochemistry of paraffin-embedded Human cervical cancer tissue using [TA321660] (TGM2 Antibody) at dilution 1/15, treated with fusion protein. (Original magnification:  $\times 200$ )



Immunohistochemistry of paraffin-embedded Human lung cancer tissue using [TA321660] (TGM2 Antibody) at dilution 1/15 (Original magnification:  $\times 200$ )



Immunohistochemistry of paraffin-embedded Human lung cancer tissue using [TA321660] (TGM2 Antibody) at dilution 1/15, treated with fusion protein. (Original magnification:  $\times 200$ )