

Product datasheet for **TA321655**

Ephrin A1 (EFNA1) Rabbit Polyclonal Antibody

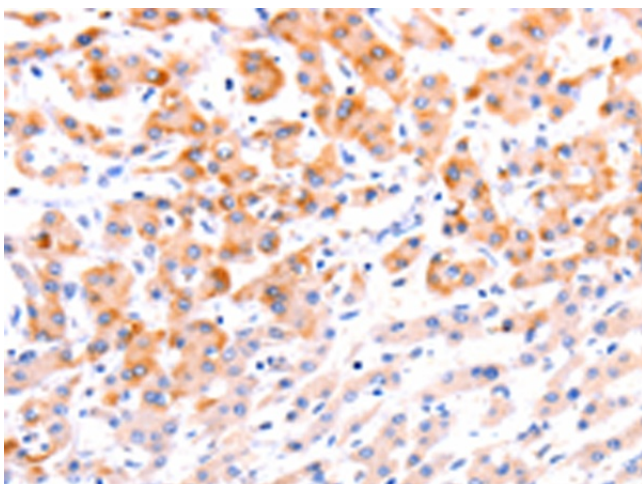
Product data:

Product Type:	Primary Antibodies
Applications:	IHC
Recommended Dilution:	IHC: 50-150 Positive control: Human liver cancer Predicted cell location: Cytoplasm
Reactivity:	Human, Mouse, Rat
Host:	Rabbit
Isotype:	IgG
Clonality:	Polyclonal
Immunogen:	Fusion protein corresponding to a region derived from 19-205 amino acids of human ephrin-A1
Formulation:	PBS pH7.3, 0.05% NaN ₃ , 50% glycerol
Concentration:	lot specific
Purification:	Antigen affinity purification
Conjugation:	Unconjugated
Storage:	Store at -20°C as received.
Stability:	Stable for 12 months from date of receipt.
Gene Name:	ephrin A1
Database Link:	NP_004419 Entrez Gene 13636 Mouse Entrez Gene 94268 Rat Entrez Gene 1942 Human P20827

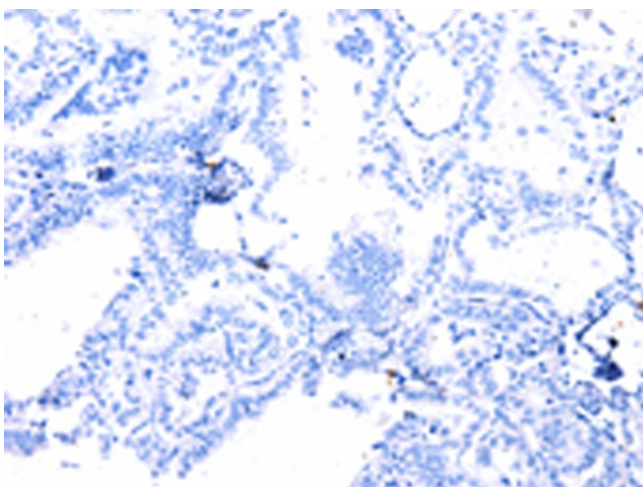


[View online »](#)

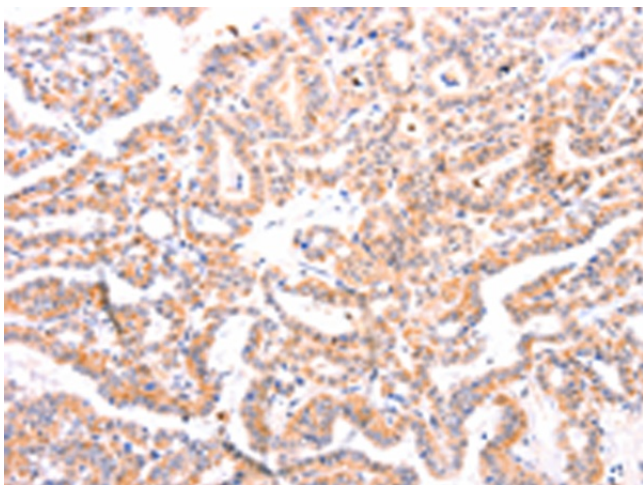
Background:	This gene encodes a member of the ephrin (EPH) family. The ephrins and EPH-related receptors comprise the largest subfamily of receptor protein-tyrosine kinases and have been implicated in mediating developmental events; especially in the nervous system and in erythropoiesis. Based on their structures and sequence relationships; ephrins are divided into the ephrin-A (EFNA) class; which are anchored to the membrane by a glycosylphosphatidylinositol linkage; and the ephrin-B (EFNB) class; which are transmembrane proteins. This gene encodes an EFNA class ephrin which binds to the EPHA2; EPHA4; EPHA5; EPHA6; and EPHA7 receptors. Two transcript variants that encode different isoforms were identified through sequence analysis.
Synonyms:	B61; ECKLG; EFL1; EPLG1; LERK-1; LERK1; TNFAIP4
Protein Families:	Druggable Genome
Protein Pathways:	Axon guidance

Product images:

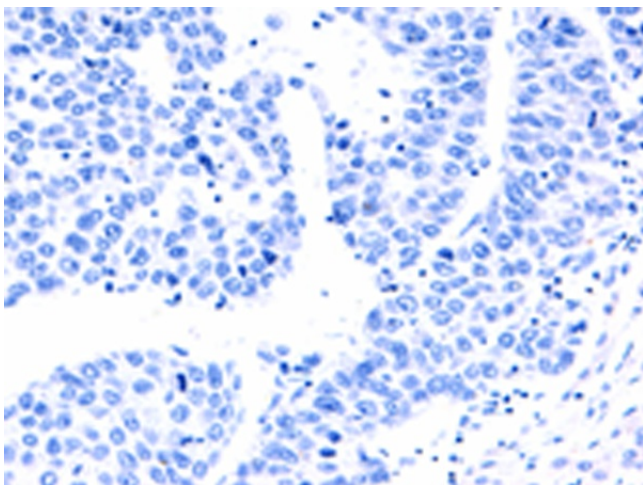
Immunohistochemistry of paraffin-embedded Human liver cancer tissue using TA321655 (EFNA1 Antibody) at dilution 1/37 (Original magnification: $\times 200$)



Immunohistochemistry of paraffin-embedded Human liver cancer tissue using TA321655 (EFNA1 Antibody) at dilution 1/37, treated with fusion protein. (Original magnification: $\times 200$)



Immunohistochemistry of paraffin-embedded Human thyroid cancer tissue using TA321655 (EFNA1 Antibody) at dilution 1/37 (Original magnification: $\times 200$)



Immunohistochemistry of paraffin-embedded Human thyroid cancer tissue using TA321655 (EFNA1 Antibody) at dilution 1/37, treated with fusion protein. (Original magnification: $\times 200$)