

Product datasheet for **TA321654**

DUSP1 Rabbit Polyclonal Antibody

Product data:

Product Type:	Primary Antibodies
Applications:	IHC, WB
Recommended Dilution:	WB: 200-1000 WB positive control: Mouse brain tissue IHC: 25-100 Positive control: Human thyroid cancer Predicted cell location: Cytoplasm
Reactivity:	Human, Mouse, Rat
Host:	Rabbit
Isotype:	IgG
Clonality:	Polyclonal
Immunogen:	Synthetic peptide corresponding to a region derived from 355-367 amino acids of Human dual specificity phosphatase 1
Formulation:	PBS pH7.3, 0.05% NaN ₃ , 50% glycerol
Concentration:	lot specific
Purification:	Antigen affinity purification
Conjugation:	Unconjugated
Storage:	Store at -20°C as received.
Stability:	Stable for 12 months from date of receipt.
Predicted Protein Size:	39 kDa
Gene Name:	dual specificity phosphatase 1
Database Link:	NP_004408 Entrez Gene 19252 Mouse Entrez Gene 114856 Rat Entrez Gene 1843 Human P28562



[View online »](#)

Background:

The expression of DUSP1 gene is induced in human skin fibroblasts by oxidative/heat stress and growth factors. It specifies a protein with structural features similar to members of the non-receptor-type protein-tyrosine phosphatase family; and which has significant amino-acid sequence similarity to a Tyr/Ser-protein phosphatase encoded by the late gene H1 of vaccinia virus. The bacterially expressed and purified DUSP1 protein has intrinsic phosphatase activity; and specifically inactivates mitogen-activated protein (MAP) kinase in vitro by the concomitant dephosphorylation of both its phosphothreonine and phosphotyrosine residues. Furthermore; it suppresses the activation of MAP kinase by oncogenic ras in extracts of *Xenopus* oocytes. Thus; DUSP1 may play an important role in the human cellular response to environmental stress as well as in the negative regulation of cellular proliferation.

Synonyms:

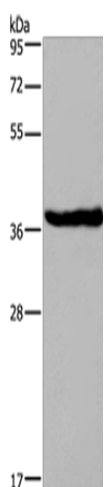
CL100; HVH1; MKP-1; MKP1; PTPN10

Protein Families:

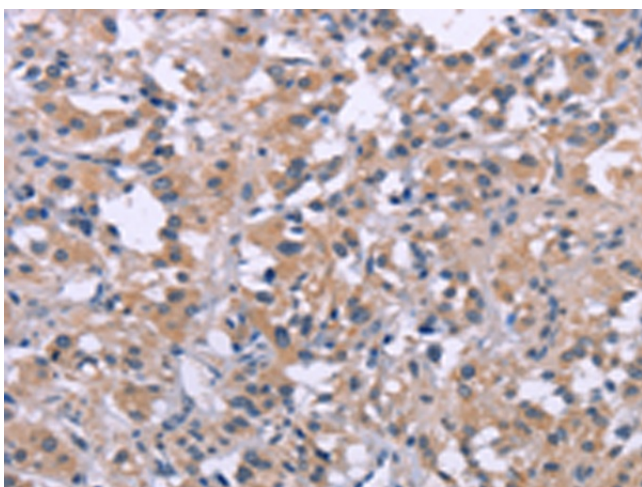
Druggable Genome, Phosphatase

Protein Pathways:

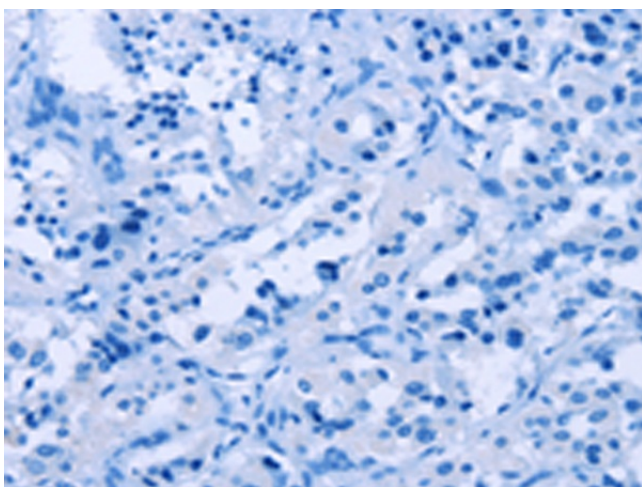
MAPK signaling pathway

Product images:

Gel: 8%SDS-PAGE
Lysate: 40 µg
Lane: Mouse brain tissue
Primary antibody: TA321654 (DUSP1 Antibody) at dilution 1/363
Secondary antibody: Goat anti rabbit IgG at 1/8000 dilution
Exposure time: 2 minutes



Immunohistochemistry of paraffin-embedded Human thyroid cancer tissue using TA321654 (DUSP1 Antibody) at dilution 1/30 (Original magnification: ×200)



Immunohistochemistry of paraffin-embedded Human thyroid cancer tissue using TA321654 (DUSP1 Antibody) at dilution 1/30, treated with synthetic peptide. (Original magnification: ×200)