

## Product datasheet for **TA321653S**

### E Cadherin (CDH1) Rabbit Polyclonal Antibody

#### Product data:

Product Type:	Primary Antibodies
Applications:	IHC
Recommended Dilution:	IHC: 25-100 Positive control: Human cervical cancer Predicted cell location: Cell membrane, Cytoplasm
Reactivity:	Human, Mouse, Rat
Host:	Rabbit
Isotype:	IgG
Clonality:	Polyclonal
Immunogen:	Synthetic peptide corresponding to C terminal 22 amino acids of human pan-cadherin
Formulation:	PBS pH7.3, 0.05% NaN <sub>3</sub> , 50% glycerol
Purification:	Antigen affinity purification
Conjugation:	Unconjugated
Storage:	Store at -20°C as received.
Stability:	Stable for 12 months from date of receipt.
Gene Name:	cadherin 1
Database Link:	<a href="#">NP_004351</a> <a href="#">Entrez Gene 12550 Mouse</a> <a href="#">Entrez Gene 83502 Rat</a> <a href="#">Entrez Gene 999 Human</a> <a href="#">P12830</a>
Background:	This gene is a classical cadherin from the cadherin superfamily. The encoded protein is a calcium dependent cell-cell adhesion glycoprotein comprised of five extracellular cadherin repeats; a transmembrane region and a highly conserved cytoplasmic tail. Mutations in this gene are correlated with gastric; breast; colorectal; thyroid and ovarian cancer. Loss of function is thought to contribute to progression in cancer by increasing proliferation; invasion; and/or metastasis. The ectodomain of this protein mediates bacterial adhesion to mammalian cells and the cytoplasmic domain is required for internalization. Identified transcript variants arise from mutation at consensus splice sites.
Synonyms:	Arc-1; CD324; CDHE; ECAD; LCAM; UVO

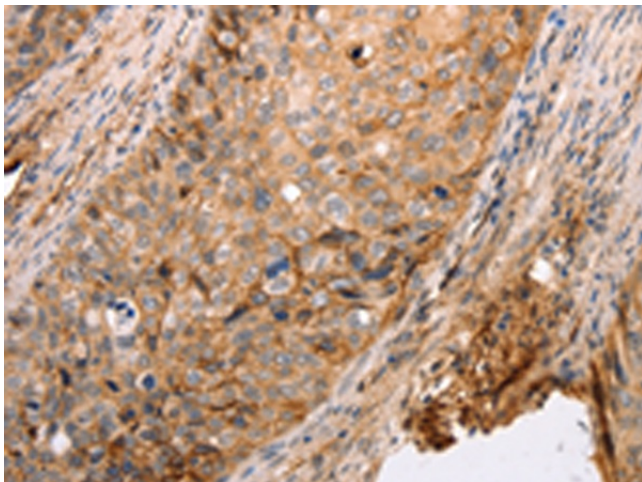


[View online »](#)

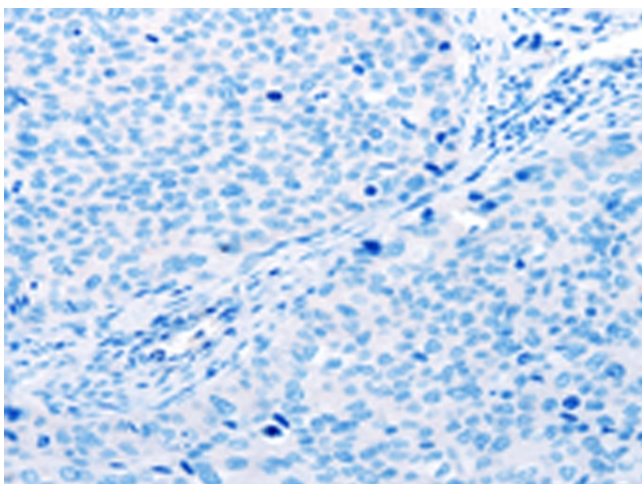
**Protein Families:** Druggable Genome, ES Cell Differentiation/IPS, Transmembrane

**Protein Pathways:** Adherens junction, Bladder cancer, Cell adhesion molecules (CAMs), Endometrial cancer, Melanoma, Pathogenic Escherichia coli infection, Pathways in cancer, Thyroid cancer

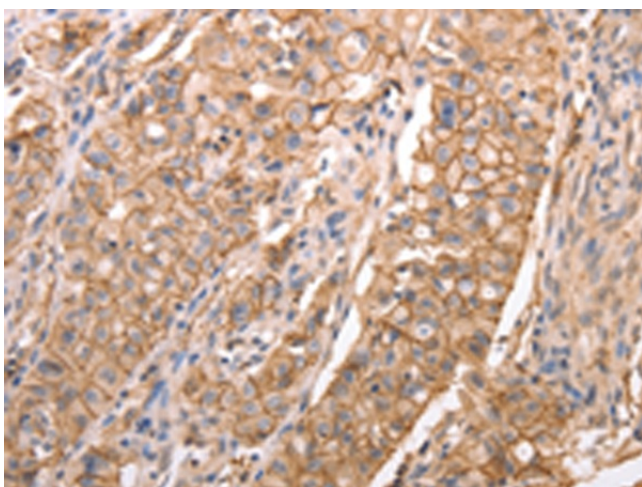
**Product images:**



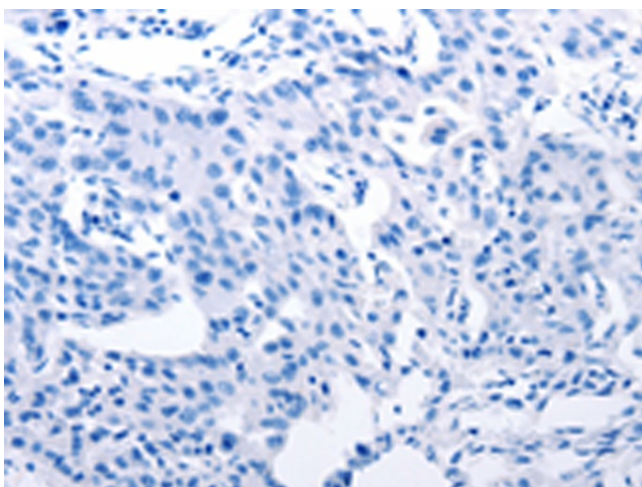
Immunohistochemistry of paraffin-embedded Human cervical cancer tissue using [TA321653] (pan CDH Antibody) at dilution 1/20 (Original magnification:  $\times 200$ )



Immunohistochemistry of paraffin-embedded Human cervical cancer tissue using [TA321653] (pan CDH Antibody) at dilution 1/20, treated with synthetic peptide. (Original magnification:  $\times 200$ )



Immunohistochemistry of paraffin-embedded Human lung cancer tissue using [TA321653] (pan CDH Antibody) at dilution 1/20 (Original magnification:  $\times 200$ )



Immunohistochemistry of paraffin-embedded Human lung cancer tissue using [TA321653] (pan CDH Antibody) at dilution 1/20, treated with synthetic peptide. (Original magnification:  $\times 200$ )