

Product datasheet for **TA321651**

E Cadherin (CDH1) Rabbit Polyclonal Antibody

Product data:

Product Type:	Primary Antibodies
Applications:	IHC, WB
Recommended Dilution:	WB: 500-2000 WB positive control: Mouse kidney tissue lysate IHC: 25-100 Positive control: Human liver cancer Predicted cell location: Cell membrane
Reactivity:	Human, Mouse, Rat
Host:	Rabbit
Isotype:	IgG
Clonality:	Polyclonal
Immunogen:	Synthetic peptide corresponding to a region derived from 773-787 amino acids of Human cadherin 1, type 1, E-cadherin (epithelial)
Formulation:	PBS pH7.3, 0.05% NaN ₃ , 50% glycerol
Concentration:	lot specific
Purification:	Antigen affinity purification
Conjugation:	Unconjugated
Storage:	Store at -20°C as received.
Stability:	Stable for 12 months from date of receipt.
Predicted Protein Size:	114 kDa
Gene Name:	cadherin 1
Database Link:	NP_004351 Entrez Gene 12550 Mouse Entrez Gene 83502 Rat Entrez Gene 999 Human P12830



[View online »](#)

Background:

This gene is a classical cadherin from the cadherin superfamily. The encoded protein is a calcium dependent cell-cell adhesion glycoprotein comprised of five extracellular cadherin repeats; a transmembrane region and a highly conserved cytoplasmic tail. Mutations in this gene are correlated with gastric; breast; colorectal; thyroid and ovarian cancer. Loss of function is thought to contribute to progression in cancer by increasing proliferation; invasion; and/or metastasis. The ectodomain of this protein mediates bacterial adhesion to mammalian cells and the cytoplasmic domain is required for internalization. Identified transcript variants arise from mutation at consensus splice sites.

Synonyms:

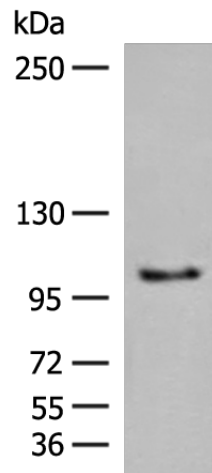
Arc-1; CD324; CDHE; ECAD; LCAM; UVO

Protein Families:

Druggable Genome, ES Cell Differentiation/IPS, Transmembrane

Protein Pathways:

Adherens junction, Bladder cancer, Cell adhesion molecules (CAMs), Endometrial cancer, Melanoma, Pathogenic Escherichia coli infection, Pathways in cancer, Thyroid cancer

Product images:

Gel: 6%SDS-PAGE

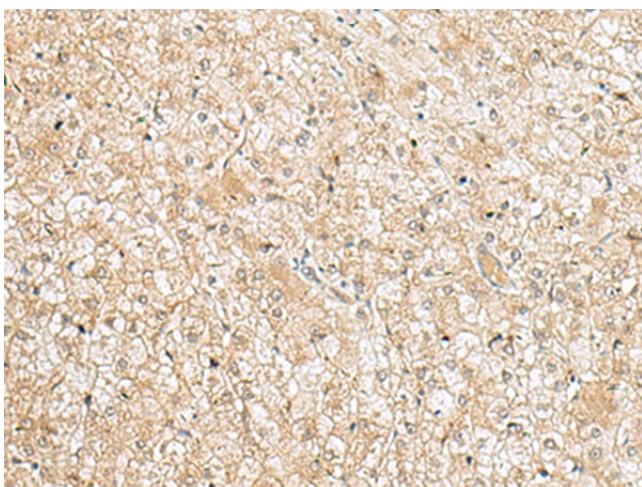
Lysate: 40 µg

Lane: Mouse kidney tissue lysate

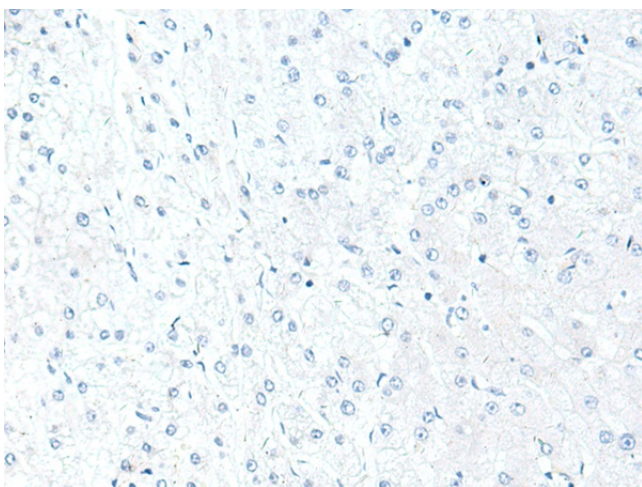
Primary antibody: TA321651 (CDH1 Antibody) at dilution 1/200

Secondary antibody: Goat anti rabbit IgG at 1/8000 dilution

Exposure time: 20 seconds



Immunohistochemistry of paraffin-embedded Human liver cancer tissue using TA321651 (CDH1 Antibody) at dilution 1/20 (Original magnification: ×200)



Immunohistochemistry of paraffin-embedded Human liver cancer tissue using TA321651 (CDH1 Antibody) at dilution 1/20, treated with synthetic peptide. (Original magnification: ×200)