

Product datasheet for **TA321649**

RUNX2 Rabbit Polyclonal Antibody

Product data:

Product Type:	Primary Antibodies
Applications:	WB
Recommended Dilution:	WB: 500-2000 WB positive control: Human kidney cancer tissue
Reactivity:	Human, Mouse
Host:	Rabbit
Isotype:	IgG
Clonality:	Polyclonal
Immunogen:	Synthetic peptide corresponding to a region derived from 320-336 amino acids of Human Core-binding factor subunit alpha-1
Formulation:	PBS pH7.3, 0.05% NaN ₃ , 50% glycerol
Concentration:	lot specific
Purification:	Antigen affinity purification
Conjugation:	Unconjugated
Storage:	Store at -20°C as received.
Stability:	Stable for 12 months from date of receipt.
Predicted Protein Size:	54 kDa
Gene Name:	runt related transcription factor 2
Database Link:	NP_004339 Entrez Gene 12393 Mouse Entrez Gene 860 Human Q13950



[View online »](#)

Background:

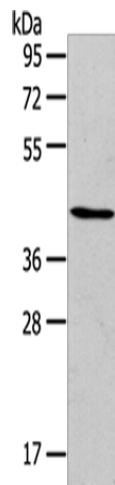
This gene is a member of the RUNX family of transcription factors and encodes a nuclear protein with an Runt DNA-binding domain. This protein is essential for osteoblastic differentiation and skeletal morphogenesis and acts as a scaffold for nucleic acids and regulatory factors involved in skeletal gene expression. The protein can bind DNA both as a monomer or; with more affinity; as a subunit of a heterodimeric complex. Mutations in this gene have been associated with the bone development disorder cleidocranial dysplasia (CCD). Transcript variants that encode different protein isoforms result from the use of alternate promoters as well as alternate splicing.

Synonyms:

AML3; CBFA1; CCD; CCD1; OSF-2; OSF2; PEA2aA; PEBP2A1; PEBP2A2; PEBP2aA; PEBP2aA1

Protein Families:

Druggable Genome, Transcription Factors

Product images:

Gel: 8%SDS-PAGE
Lysate: 40 µg
Lane: Human kidney cancer tissue
Primary antibody: TA321649 (RUNX2 Antibody) at dilution 1/105
Secondary antibody: Goat anti rabbit IgG at 1/8000 dilution
Exposure time: 2 minutes