

## Product datasheet for **TA321643**

### **B Raf (BRAF) Rabbit Polyclonal Antibody**

#### **Product data:**

Product Type:	Primary Antibodies
Applications:	IHC, WB
Recommended Dilution:	WB: 500-2000 WB positive control: Hela and Raji cells IHC: 50-200 Positive control: Human cervical cancer Predicted cell location: Cytoplasm and Nucleus
Reactivity:	Human, Mouse
Host:	Rabbit
Isotype:	IgG
Clonality:	Polyclonal
Immunogen:	Synthetic peptide corresponding to a region derived from 71-86 amino acids of Human v-raf murine sarcoma viral oncogene homolog B1
Formulation:	PBS pH7.3, 0.05% NaN <sub>3</sub> , 50% glycerol
Concentration:	lot specific
Purification:	Antigen affinity purification
Conjugation:	Unconjugated
Storage:	Store at -20°C as received.
Stability:	Stable for 12 months from date of receipt.
Predicted Protein Size:	85 kDa
Gene Name:	B-Raf proto-oncogene, serine/threonine kinase
Database Link:	<a href="#">NP_004324</a> <a href="#">Entrez Gene 109880 Mouse</a> <a href="#">Entrez Gene 673 Human</a> <a href="#">P15056</a>



[View online »](#)

**Background:**

This gene encodes a protein belonging to the raf/mil family of serine/threonine protein kinases. This protein plays a role in regulating the MAP kinase/ERKs signaling pathway; which affects cell division; differentiation; and secretion. Mutations in this gene are associated with cardiofaciocutaneous syndrome; a disease characterized by heart defects; mental retardation and a distinctive facial appearance. Mutations in this gene have also been associated with various cancers; including non-Hodgkin lymphoma; colorectal cancer; malignant melanoma; thyroid carcinoma; non-small cell lung carcinoma; and adenocarcinoma of lung. A pseudogene; which is located on chromosome X; has been identified for this gene.

**Synonyms:**

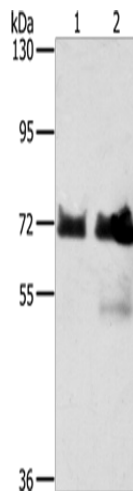
B-raf; B-RAF1; BRAF1; NS7; RAFB1

**Protein Families:**

Druggable Genome, Protein Kinase

**Protein Pathways:**

Acute myeloid leukemia, Bladder cancer, Chemokine signaling pathway, Chronic myeloid leukemia, Colorectal cancer, Endometrial cancer, ErbB signaling pathway, Focal adhesion, Glioma, Insulin signaling pathway, Long-term depression, Long-term potentiation, MAPK signaling pathway, Melanoma, mTOR signaling pathway, Natural killer cell mediated cytotoxicity, Neurotrophin signaling pathway, Non-small cell lung cancer, Pancreatic cancer, Pathways in cancer, Progesterone-mediated oocyte maturation, Prostate cancer, Regulation of actin cytoskeleton, Renal cell carcinoma, Thyroid cancer, Vascular smooth muscle contraction

**Product images:**

Gel: 6%SDS-PAGE

Lysate: 40 µg

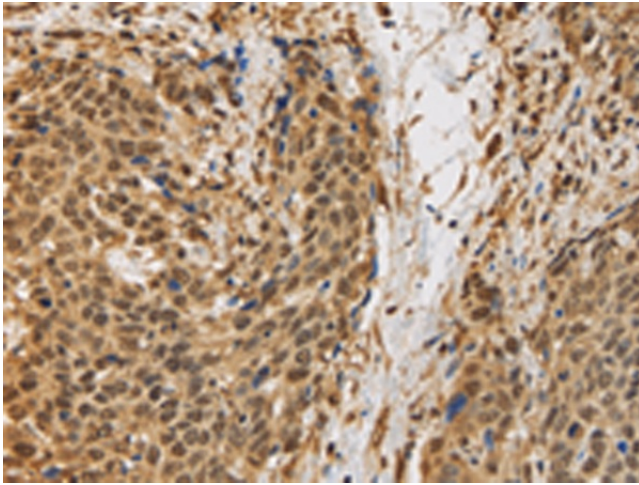
Lane 1-2: HeLa cells

Raji cells

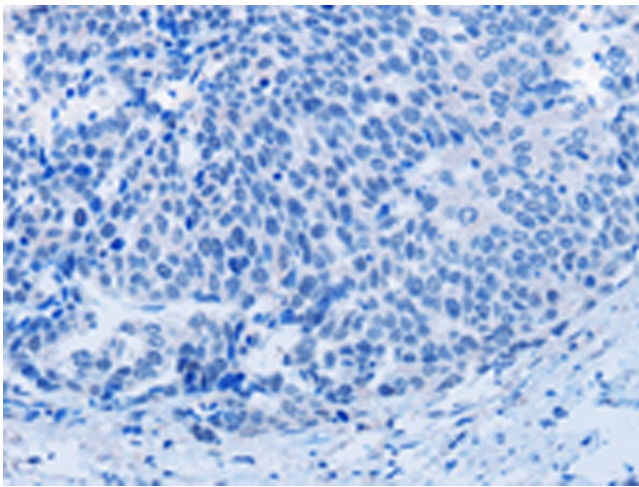
Primary antibody: TA321643 (BRAF Antibody) at dilution 1/400

Secondary antibody: Goat anti rabbit IgG at 1/8000 dilution

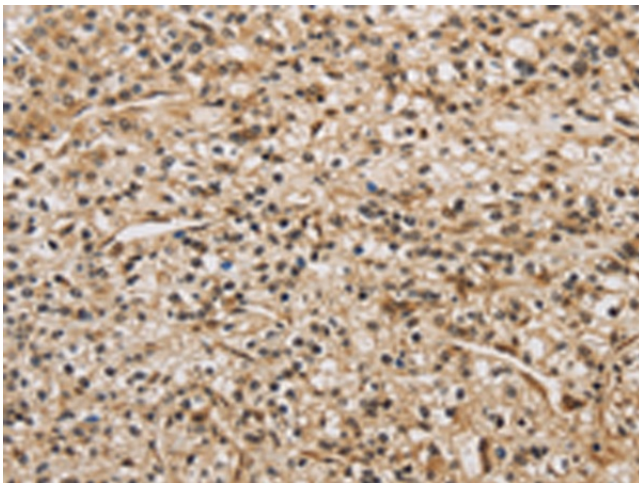
Exposure time: 1 minute



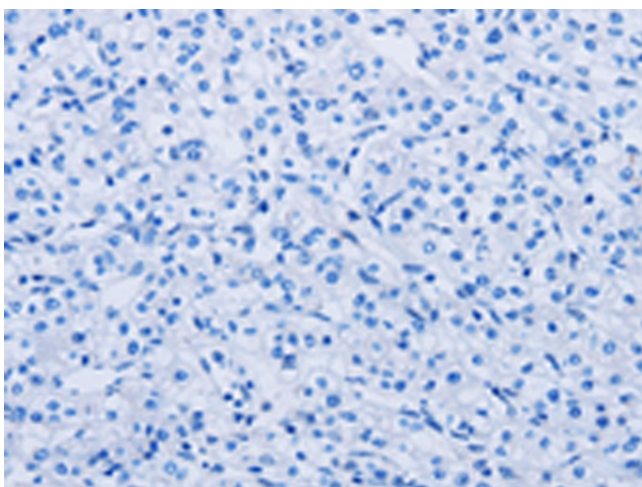
Immunohistochemistry of paraffin-embedded Human cervical cancer tissue using TA321643 (BRAF Antibody) at dilution 1/30 (Original magnification:  $\times 200$ )



Immunohistochemistry of paraffin-embedded Human cervical cancer tissue using TA321643 (BRAF Antibody) at dilution 1/30, treated with synthetic peptide. (Original magnification:  $\times 200$ )



Immunohistochemistry of paraffin-embedded Human prostate cancer tissue using TA321643 (BRAF Antibody) at dilution 1/30 (Original magnification:  $\times 200$ )



Immunohistochemistry of paraffin-embedded Human prostate cancer tissue using TA321643 (BRAF Antibody) at dilution 1/30, treated with synthetic peptide. (Original magnification: ×200)