

## Product datasheet for **TA321642S**

### BAX Rabbit Polyclonal Antibody

#### Product data:

Product Type:	Primary Antibodies
Applications:	IHC, WB
Recommended Dilution:	WB: 500-2000 WB positive control: A549, HeLa, RAW264.7, LOVO cell lysates IHC: 50-200 Positive control: Human liver cancer Predicted cell location: Cytoplasm
Reactivity:	Human, Mouse, Rat
Host:	Rabbit
Isotype:	IgG
Clonality:	Polyclonal
Immunogen:	Fusion protein corresponding to a region derived from 2-172 amino acids of human BCL2-associated X protein
Formulation:	PBS pH7.3, 0.05% NaN <sub>3</sub> , 50% glycerol
Purification:	Antigen affinity purification
Conjugation:	Unconjugated
Storage:	Store at -20°C as received.
Stability:	Stable for 12 months from date of receipt.
Predicted Protein Size:	21 kDa
Gene Name:	BCL2 associated X protein
Database Link:	<a href="#">NP_004315</a> <a href="#">Entrez Gene 12028 Mouse</a> <a href="#">Entrez Gene 24887 Rat</a> <a href="#">Entrez Gene 581 Human</a> <a href="#">Q07812</a>



[View online »](#)

**Background:**

The protein encoded by this gene belongs to the BCL2 protein family. BCL2 family members form hetero- or homodimers and act as anti- or pro-apoptotic regulators that are involved in a wide variety of cellular activities. This protein forms a heterodimer with BCL2, and functions as an apoptotic activator. This protein is reported to interact with, and increase the opening of, the mitochondrial voltage-dependent anion channel (VDAC), which leads to the loss in membrane potential and the release of cytochrome c. The expression of this gene is regulated by the tumor suppressor P53 and has been shown to be involved in P53-mediated apoptosis. Multiple alternatively spliced transcript variants, which encode different isoforms, have been reported for this gene.

**Synonyms:**

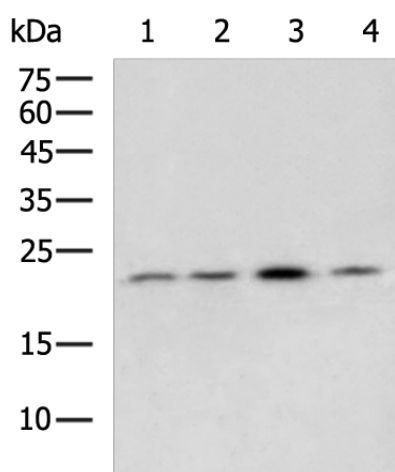
BCL2L4

**Protein Families:**

Druggable Genome, Transmembrane

**Protein Pathways:**

Amyotrophic lateral sclerosis (ALS), Apoptosis, Colorectal cancer, Huntington's disease, Neurotrophin signaling pathway, p53 signaling pathway, Pathways in cancer, Prion diseases

**Product images:**

Gel: 12%SDS-PAGE

Lysate: 40 µg

Lane 1-4: A549

Hela

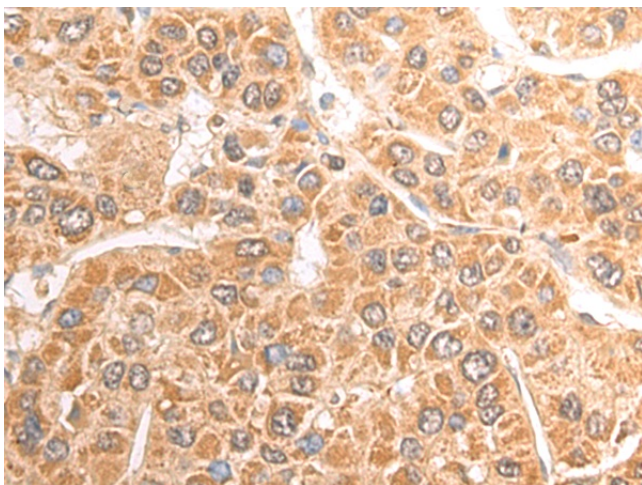
RAW264.7

LOVO cell lysates

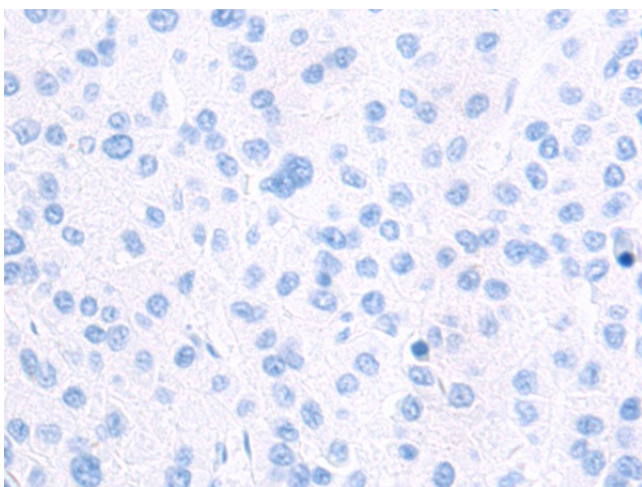
Primary antibody: [TA321642] (BAX Antibody) at dilution 1/250

Secondary antibody: Goat anti rabbit IgG at 1/5000 dilution

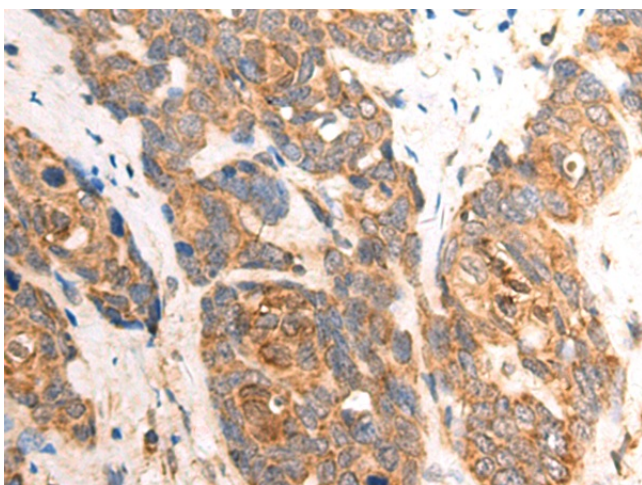
Exposure time: 1 second



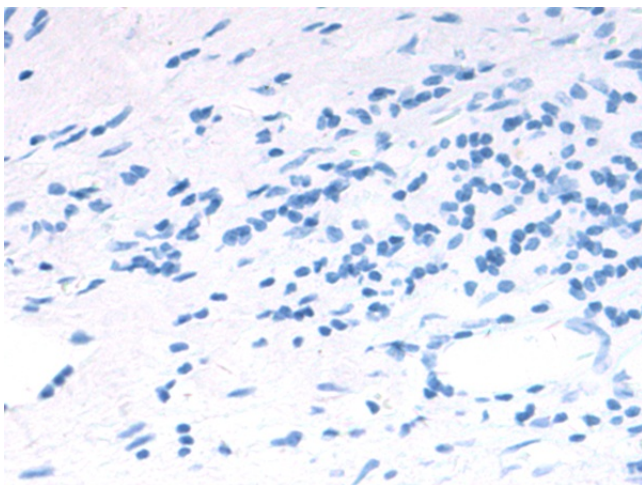
Immunohistochemistry of paraffin-embedded Human liver cancer tissue using [TA321642] (BAX Antibody) at dilution 1/50 (Original magnification: x200)



Immunohistochemistry of paraffin-embedded Human liver cancer tissue using [TA321642] (BAX Antibody) at dilution 1/50, treated with fusion protein. (Original magnification: x200)



Immunohistochemistry of paraffin-embedded Human cervical cancer tissue using [TA321642] (BAX Antibody) at dilution 1/50 (Original magnification: x200)



Immunohistochemistry of paraffin-embedded Human cervical cancer tissue using [TA321642] (BAX Antibody) at dilution 1/50, treated with fusion protein. (Original magnification: ×200)