

## Product datasheet for TA321640

### ASCLI Rabbit Polyclonal Antibody

#### Product data:

<b>Product Type:</b>	Primary Antibodies
<b>Applications:</b>	IHC
<b>Recommended Dilution:</b>	IHC: 50–200 Positive control: Human ovarian cancer Predicted cell location: Nucleus
<b>Reactivity:</b>	Human, Mouse, Rat
<b>Host:</b>	Rabbit
<b>Isotype:</b>	IgG
<b>Clonality:</b>	Polyclonal
<b>Immunogen:</b>	Synthetic peptide corresponding to a region derived from 215–228 amino acids of human achaete-scute complex homolog 1 (Drosophila)
<b>Formulation:</b>	PBS pH7.3, 0.05% NaN <sub>3</sub> , 50% glycerol
<b>Concentration:</b>	lot specific
<b>Purification:</b>	Antigen affinity purification
<b>Conjugation:</b>	Unconjugated
<b>Storage:</b>	Store at –20°C as received.
<b>Stability:</b>	Stable for 12 months from date of receipt.
<b>Gene Name:</b>	achaete-scute family bHLH transcription factor 1
<b>Database Link:</b>	<a href="#">NP_004307</a> <a href="#">Entrez Gene 17172 Mouse</a> <a href="#">Entrez Gene 64186 Rat</a> <a href="#">Entrez Gene 429 Human</a> <a href="#">P50553</a>



**Background:**

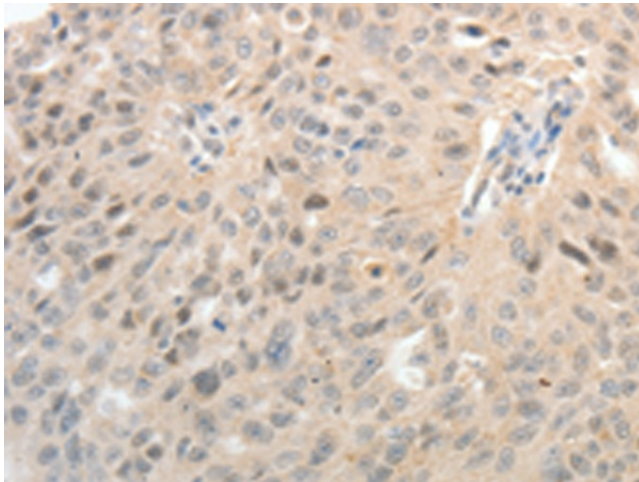
This gene encodes a member of the basic helix-loop-helix (BHLH) family of transcription factors. The protein activates transcription by binding to the E box (5'-CANNTG-3'). Dimerization with other BHLH proteins is required for efficient DNA binding. This protein plays a role in the neuronal commitment and differentiation and in the generation of olfactory and autonomic neurons. Mutations in this gene may contribute to the congenital central hypoventilation syndrome (CCHS) phenotype in rare cases.

**Synonyms:**

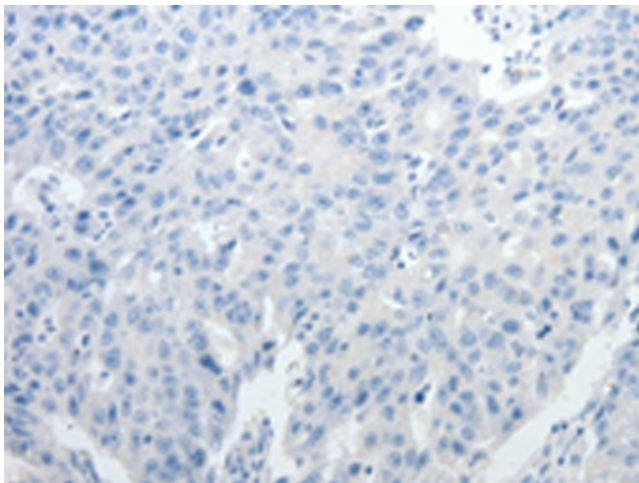
ASH1; bHLHa46; HASH1; MASH1

**Protein Families:**

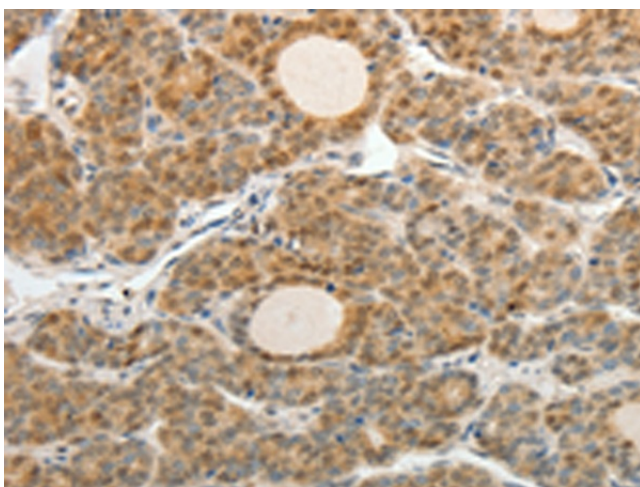
Druggable Genome, Transcription Factors

**Product images:**

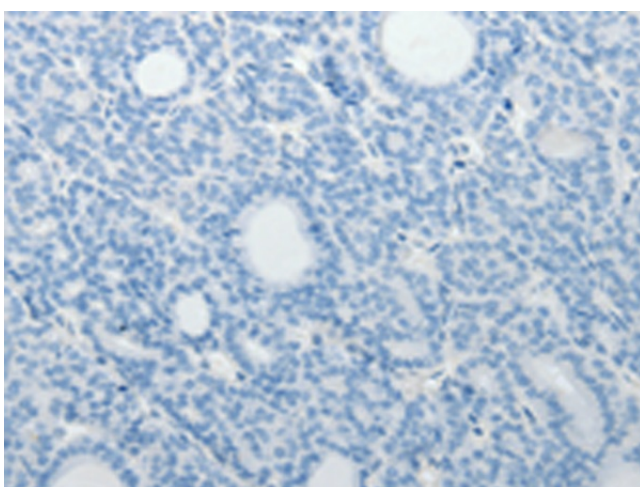
Immunohistochemistry of paraffin-embedded Human ovarian cancer tissue using TA321640 (ASCL1 Antibody) at dilution 1/30 (Original magnification: ×200)



Immunohistochemistry of paraffin-embedded Human ovarian cancer tissue using TA321640 (ASCL1 Antibody) at dilution 1/30, treated with synthetic peptide. (Original magnification: ×200)



Immunohistochemistry of paraffin-embedded Human thyroid cancer tissue using TA321640 (ASCL1 Antibody) at dilution 1/30 (Original magnification:  $\times 200$ )



Immunohistochemistry of paraffin-embedded Human thyroid cancer tissue using TA321640 (ASCL1 Antibody) at dilution 1/30, treated with synthetic peptide. (Original magnification:  $\times 200$ )