

Product datasheet for **TA321636**

SLC22A8 Rabbit Polyclonal Antibody

Product data:

Product Type:	Primary Antibodies
Applications:	IHC, WB
Recommended Dilution:	WB: 500-2000 WB positive control: 231 cells IHC: 25-100 Positive control: Human cervical cancer Predicted cell location: Cytoplasm, Nucleus
Reactivity:	Human
Host:	Rabbit
Isotype:	IgG
Clonality:	Polyclonal
Immunogen:	Synthetic peptide corresponding to a region derived from 512-525 amino acids of Human solute carrier family 22 (organic anion transporter), member 8
Formulation:	PBS pH7.3, 0.05% NaN ₃ , 50% glycerol
Concentration:	lot specific
Purification:	Antigen affinity purification
Conjugation:	Unconjugated
Storage:	Store at -20°C as received.
Stability:	Stable for 12 months from date of receipt.
Predicted Protein Size:	60 kDa
Gene Name:	solute carrier family 22 member 8
Database Link:	NP_004245 Entrez Gene 9376 Human Q8TCC7



[View online »](#)

Background:

This gene encodes a protein involved in the sodium-independent transport and excretion of organic anions; some of which are potentially toxic. The encoded protein is an integral membrane protein and appears to be localized to the basolateral membrane of the kidney. Multiple alternatively spliced transcript variants that encode different protein isoforms have been described for this gene.

Synonyms:

OAT3

Protein Families:

Transmembrane

Product images:


Gel: 10%SDS-PAGE

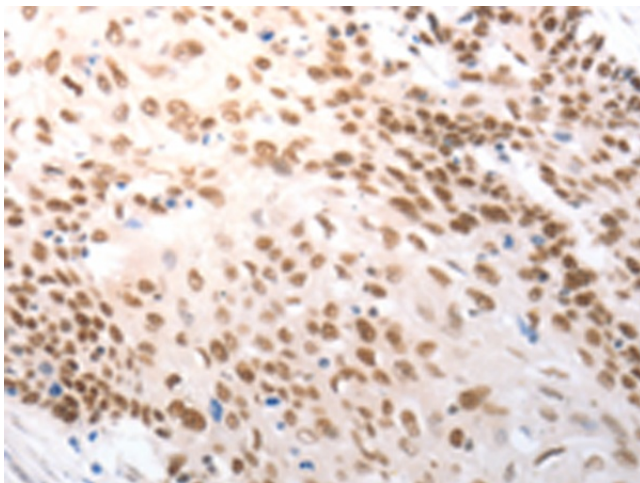
Lysate: 40 µg

Lane: 231 cells

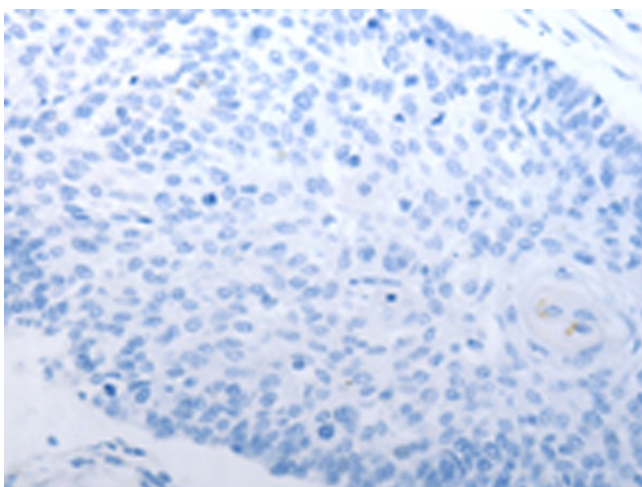
Primary antibody: TA321636 (SLC22A8 Antibody) at dilution 1/400

Secondary antibody: Goat anti rabbit IgG at 1/8000 dilution

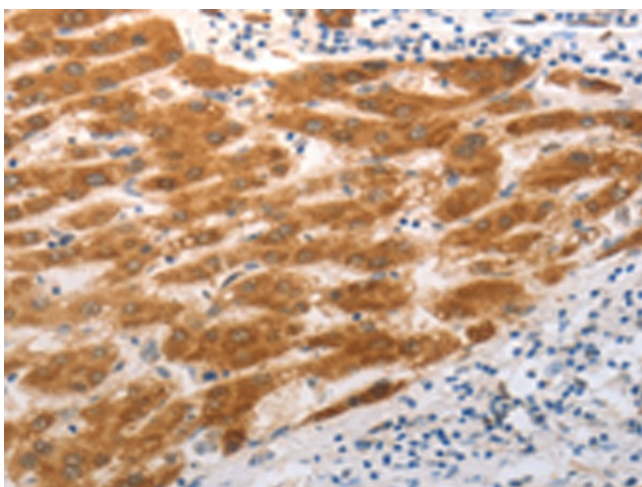
Exposure time: 1 second



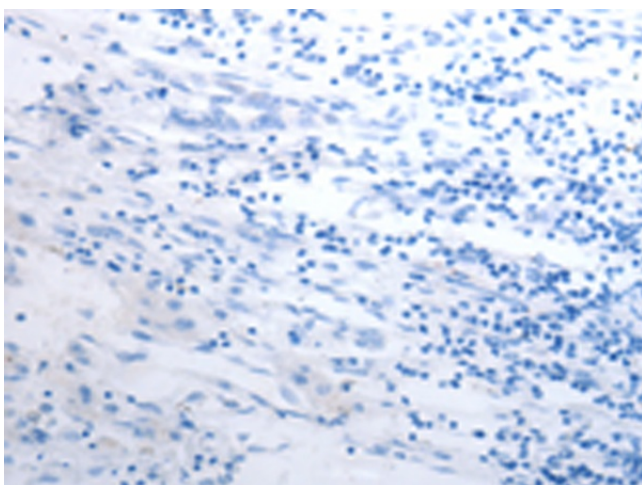
Immunohistochemistry of paraffin-embedded Human cervical cancer tissue using TA321636 (SLC22A8 Antibody) at dilution 1/25 (Original magnification: ×200)



Immunohistochemistry of paraffin-embedded Human cervical cancer tissue using TA321636 (SLC22A8 Antibody) at dilution 1/25, treated with synthetic peptide. (Original magnification: ×200)



Immunohistochemistry of paraffin-embedded Human liver cancer tissue using TA321636 (SLC22A8 Antibody) at dilution 1/25 (Original magnification: ×200)



Immunohistochemistry of paraffin-embedded Human liver cancer tissue using TA321636 (SLC22A8 Antibody) at dilution 1/25, treated with synthetic peptide. (Original magnification: ×200)