

Product datasheet for **TA321635S**

GLP2R Rabbit Polyclonal Antibody

Product data:

| | |
|-------------------------|------------------------------------------------------------------------------------------------------------------------------------------------------------------|
| Product Type: | Primary Antibodies |
| Applications: | IHC, WB |
| Recommended Dilution: | WB: 500-2000 WB positive control: Jurkat cells IHC: 25-100 Positive control: Human breast cancer Predicted cell location: Cytoplasm or Cell membrane |
| Reactivity: | Human, Mouse |
| Host: | Rabbit |
| Isotype: | IgG |
| Clonality: | Polyclonal |
| Immunogen: | Fusion protein corresponding to a region derived from 1-179 amino acids of human glucagon-like peptide 2 receptor |
| Formulation: | PBS pH7.3, 0.05% NaN ₃ , 50% glycerol |
| Purification: | Antigen affinity purification |
| Conjugation: | Unconjugated |
| Storage: | Store at -20°C as received. |
| Stability: | Stable for 12 months from date of receipt. |
| Predicted Protein Size: | 63 kDa |
| Gene Name: | glucagon like peptide 2 receptor |
| Database Link: | NP_004237 Entrez Gene 93896 Mouse Entrez Gene 9340 Human O95838 |



[View online »](#)

Background:

The GLP2 receptor (GLP2R) is a G protein-coupled receptor superfamily member closely related to the glucagon receptor and GLP1 receptor. Glucagon-like peptide-2 (GLP2) is a 33-amino acid proglucagon-derived peptide produced by intestinal enteroendocrine cells. Like glucagon-like peptide-1 (GLP1) and glucagon itself; it is derived from the proglucagon peptide encoded by the GCG gene. GLP2 stimulates intestinal growth and upregulates villus height in the small intestine; concomitant with increased crypt cell proliferation and decreased enterocyte apoptosis. Moreover; GLP2 prevents intestinal hypoplasia resulting from total parenteral nutrition. GLP2R; a G protein-coupled receptor superfamily member is expressed in the gut and closely related to the glucagon receptor (GCGR) and the receptor for GLP1 (GLP1R).

Synonyms:

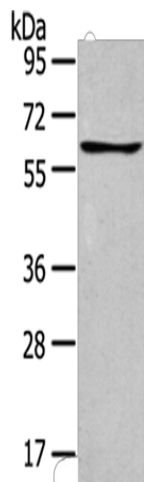
glucagon-like peptide 2 receptor; OTTHUMP00000160769

Protein Families:

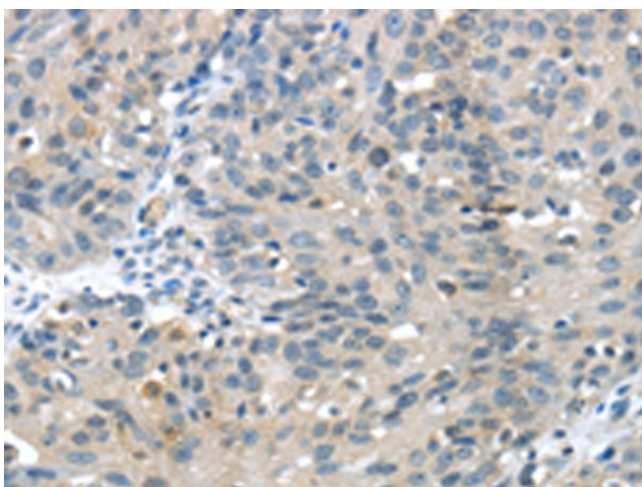
Druggable Genome, GPCR, Transmembrane

Protein Pathways:

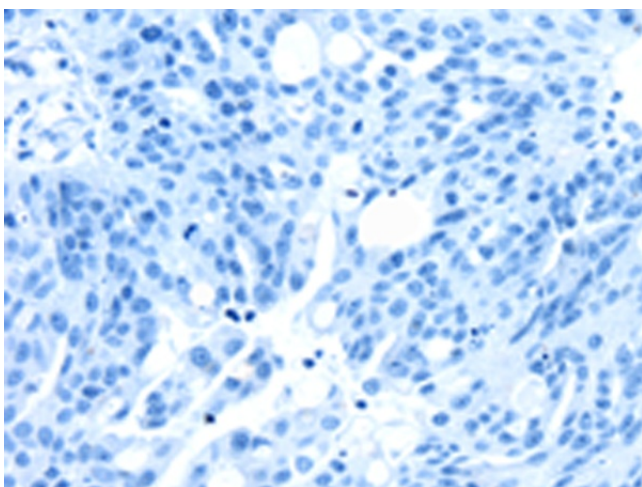
Neuroactive ligand-receptor interaction

Product images:

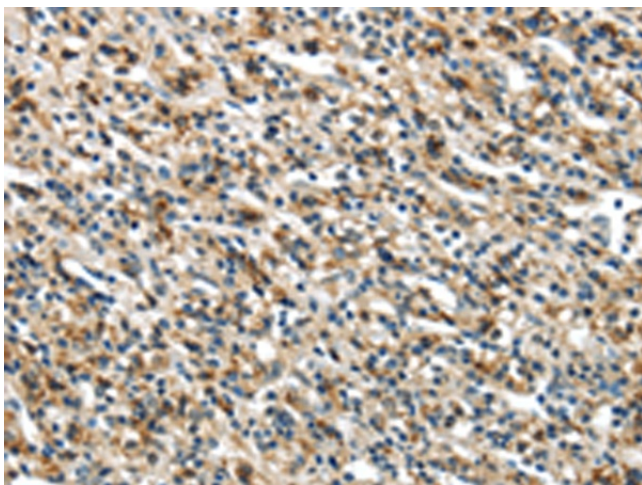
Gel: 8%SDS-PAGE
Lysate: 40 µg
Lane: Jurkat cells
Primary antibody: [TA321635] (GLP2R Antibody)
at dilution 1/400
Secondary antibody: Goat anti rabbit IgG at
1/8000 dilution
Exposure time: 1 minute



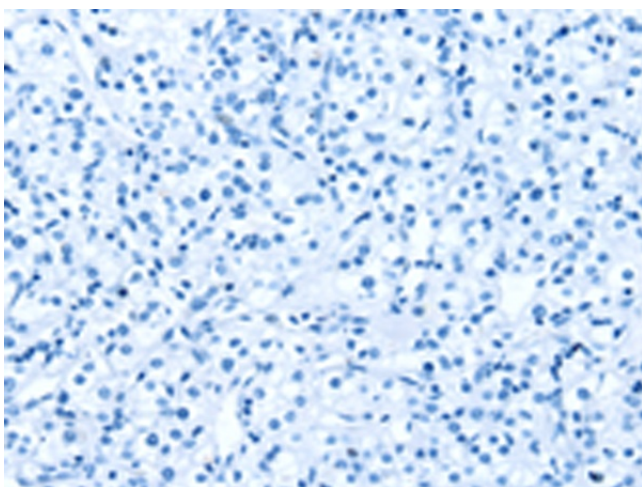
Immunohistochemistry of paraffin-embedded Human breast cancer tissue using [TA321635] (GLP2R Antibody) at dilution 1/30 (Original magnification: $\times 200$)



Immunohistochemistry of paraffin-embedded Human breast cancer tissue using [TA321635] (GLP2R Antibody) at dilution 1/30, treated with fusion protein. (Original magnification: $\times 200$)



Immunohistochemistry of paraffin-embedded Human prostate cancer tissue using [TA321635] (GLP2R Antibody) at dilution 1/30 (Original magnification: $\times 200$)



Immunohistochemistry of paraffin-embedded Human prostate cancer tissue using [TA321635] (GLP2R Antibody) at dilution 1/30, treated with fusion protein. (Original magnification: ×200)