

## Product datasheet for **TA321635**

### GLP2R Rabbit Polyclonal Antibody

#### Product data:

Product Type:	Primary Antibodies
Applications:	IHC, WB
Recommended Dilution:	WB: 500-2000 WB positive control: Jurkat cells IHC: 25-100 Positive control: Human breast cancer Predicted cell location: Cytoplasm or Cell membrane
Reactivity:	Human, Mouse
Host:	Rabbit
Isotype:	IgG
Clonality:	Polyclonal
Immunogen:	Fusion protein corresponding to a region derived from 1-179 amino acids of human glucagon-like peptide 2 receptor
Formulation:	PBS pH7.3, 0.05% NaN <sub>3</sub> , 50% glycerol
Concentration:	lot specific
Purification:	Antigen affinity purification
Conjugation:	Unconjugated
Storage:	Store at -20°C as received.
Stability:	Stable for 12 months from date of receipt.
Predicted Protein Size:	63 kDa
Gene Name:	glucagon like peptide 2 receptor
Database Link:	<a href="#">NP_004237</a> <a href="#">Entrez Gene 93896 Mouse</a> <a href="#">Entrez Gene 9340 Human</a> <a href="#">O95838</a>



[View online »](#)

**Background:**

The GLP2 receptor (GLP2R) is a G protein-coupled receptor superfamily member closely related to the glucagon receptor and GLP1 receptor. Glucagon-like peptide-2 (GLP2) is a 33-amino acid proglucagon-derived peptide produced by intestinal enteroendocrine cells. Like glucagon-like peptide-1 (GLP1) and glucagon itself; it is derived from the proglucagon peptide encoded by the GCG gene. GLP2 stimulates intestinal growth and upregulates villus height in the small intestine; concomitant with increased crypt cell proliferation and decreased enterocyte apoptosis. Moreover; GLP2 prevents intestinal hypoplasia resulting from total parenteral nutrition. GLP2R; a G protein-coupled receptor superfamily member is expressed in the gut and closely related to the glucagon receptor (GCGR) and the receptor for GLP1 (GLP1R).

**Synonyms:**

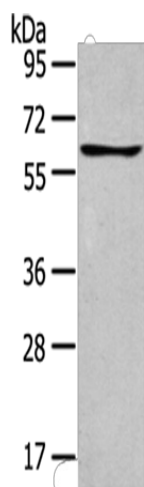
glucagon-like peptide 2 receptor; OTTHUMP00000160769

**Protein Families:**

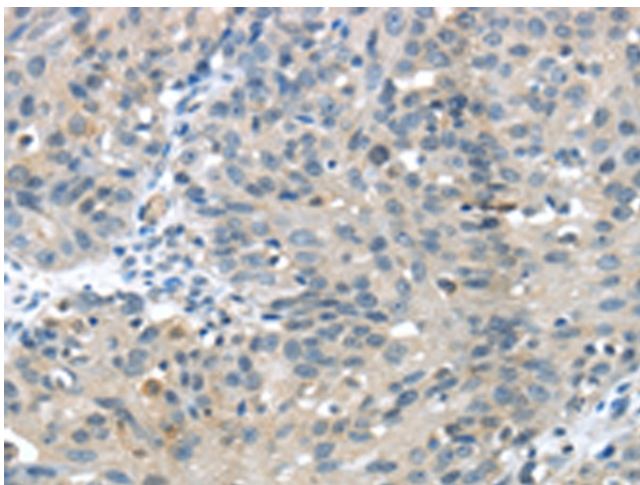
Druggable Genome, GPCR, Transmembrane

**Protein Pathways:**

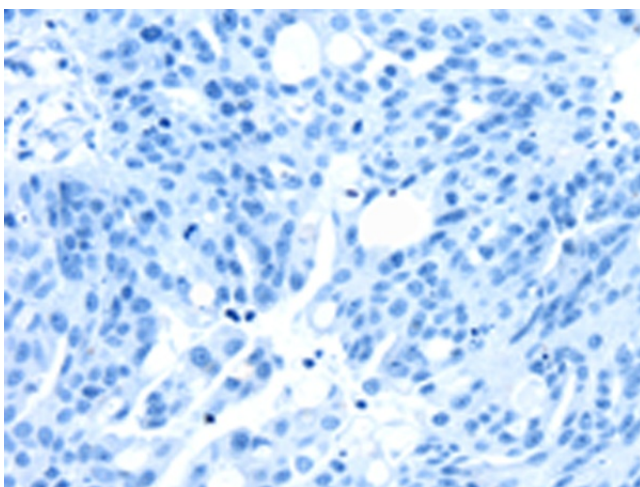
Neuroactive ligand-receptor interaction

**Product images:**

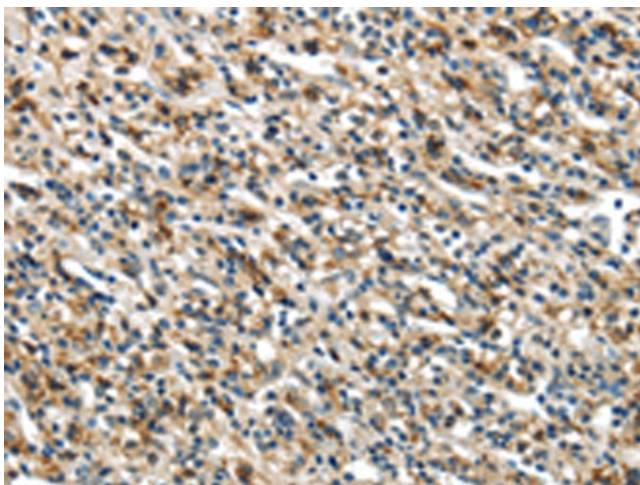
Gel: 8%SDS-PAGE  
Lysate: 40 µg  
Lane: Jurkat cells  
Primary antibody: TA321635 (GLP2R Antibody) at dilution 1/400  
Secondary antibody: Goat anti rabbit IgG at 1/8000 dilution  
Exposure time: 1 minute



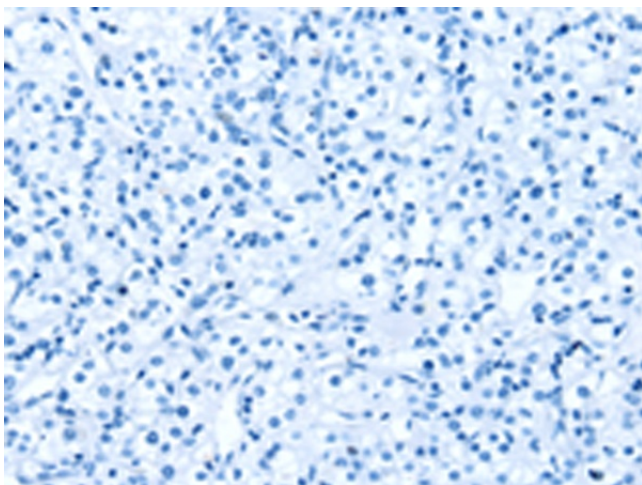
Immunohistochemistry of paraffin-embedded Human breast cancer tissue using TA321635 (GLP2R Antibody) at dilution 1/30 (Original magnification: ×200)



Immunohistochemistry of paraffin-embedded Human breast cancer tissue using TA321635 (GLP2R Antibody) at dilution 1/30, treated with fusion protein. (Original magnification: ×200)



Immunohistochemistry of paraffin-embedded Human prostate cancer tissue using TA321635 (GLP2R Antibody) at dilution 1/30 (Original magnification: ×200)



Immunohistochemistry of paraffin-embedded Human prostate cancer tissue using TA321635 (GLP2R Antibody) at dilution 1/30, treated with fusion protein. (Original magnification: ×200)