

## Product datasheet for **TA321631S**

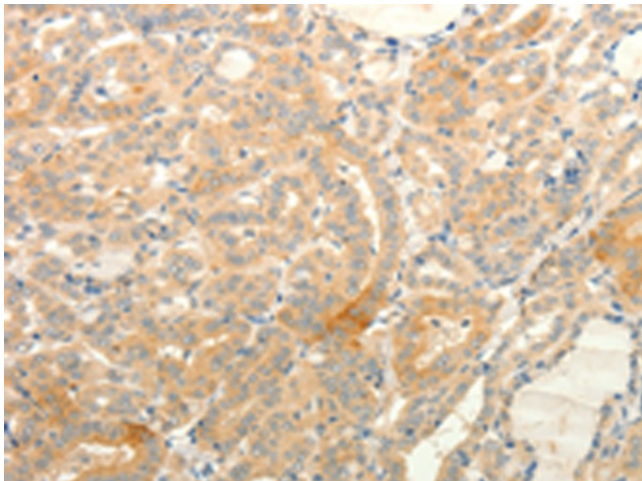
### Tryptophan Hydroxylase (TPH1) Rabbit Polyclonal Antibody

#### Product data:

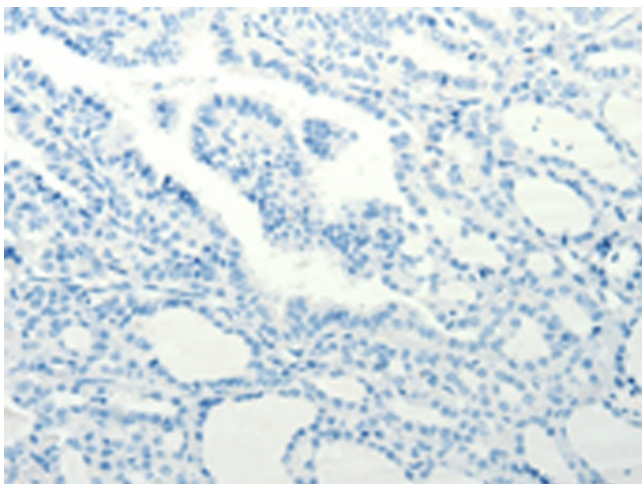
Product Type:	Primary Antibodies
Applications:	IHC
Recommended Dilution:	IHC: 25-100 Positive control: Human thyroid cancer Predicted cell location: Cytoplasm
Reactivity:	Human, Mouse, Rat
Host:	Rabbit
Isotype:	IgG
Clonality:	Polyclonal
Immunogen:	Fusion protein corresponding to a region derived from C terminal 250 amino acids of human tryptophan hydroxylase 1
Formulation:	PBS pH7.3, 0.05% NaN <sub>3</sub> , 50% glycerol
Purification:	Antigen affinity purification
Conjugation:	Unconjugated
Storage:	Store at -20°C as received.
Stability:	Stable for 12 months from date of receipt.
Gene Name:	tryptophan hydroxylase 1
Database Link:	<a href="#">NP_004170</a> <a href="#">Entrez Gene 21990 Mouse</a> <a href="#">Entrez Gene 24848 Rat</a> <a href="#">Entrez Gene 7166 Human</a> <a href="#">P17752</a>
Background:	This gene encodes a member of the aromatic amino acid hydroxylase family. The encoded protein catalyzes the first and rate limiting step in the biosynthesis of serotonin; an important hormone and neurotransmitter. Mutations in this gene have been associated with an elevated risk for a variety of diseases and disorders; including schizophrenia; somatic anxiety; anger-related traits; bipolar disorder; suicidal behavior; addictions; and others.
Synonyms:	TPRH; TRPH
Protein Families:	Druggable Genome
Protein Pathways:	Metabolic pathways, Tryptophan metabolism



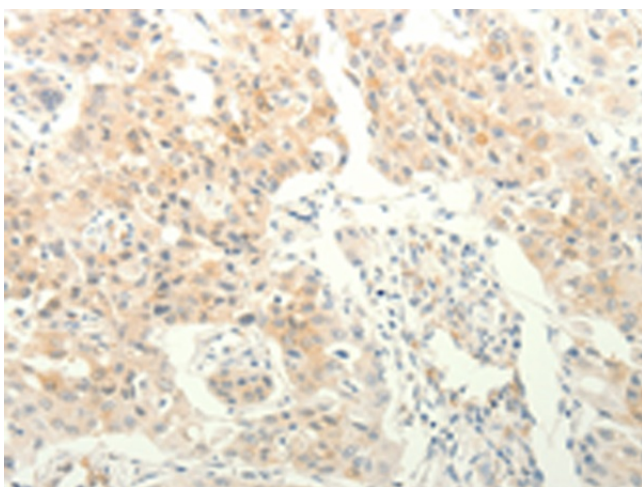
[View online »](#)

**Product images:**

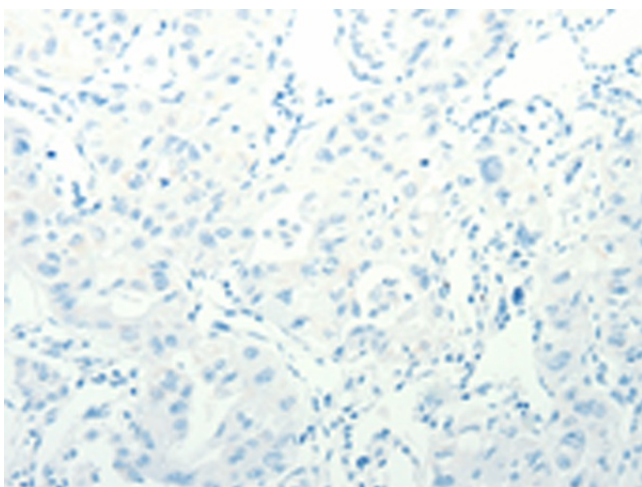
Immunohistochemistry of paraffin-embedded Human thyroid cancer tissue using [TA321631] (TPH1 Antibody) at dilution 1/25 (Original magnification:  $\times 200$ )



Immunohistochemistry of paraffin-embedded Human thyroid cancer tissue using [TA321631] (TPH1 Antibody) at dilution 1/25, treated with fusion protein. (Original magnification:  $\times 200$ )



Immunohistochemistry of paraffin-embedded Human lung cancer tissue using [TA321631] (TPH1 Antibody) at dilution 1/25 (Original magnification:  $\times 200$ )



Immunohistochemistry of paraffin-embedded Human lung cancer tissue using [TA321631] (TPH1 Antibody) at dilution 1/25, treated with fusion protein. (Original magnification:  $\times 200$ )