

## Product datasheet for **TA321627**

### Rab5 (RAB5A) Rabbit Polyclonal Antibody

#### Product data:

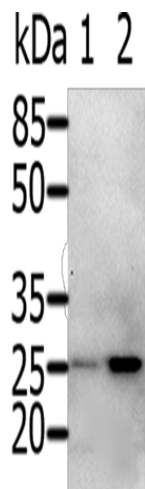
Product Type:	Primary Antibodies
Applications:	WB
Recommended Dilution:	WB: 500-2000 WB positive control: 231 cells and Human fetal brain tissue
Reactivity:	Human, Mouse, Rat
Host:	Rabbit
Isotype:	IgG
Clonality:	Polyclonal
Immunogen:	Synthetic peptide corresponding to a region derived from 1-16 amino acids of Human Ras-related protein Rab-5A
Formulation:	PBS pH7.3, 0.05% NaN <sub>3</sub> , 50% glycerol
Concentration:	lot specific
Purification:	Antigen affinity purification
Conjugation:	Unconjugated
Storage:	Store at -20°C as received.
Stability:	Stable for 12 months from date of receipt.
Predicted Protein Size:	24 kDa
Gene Name:	RAB5A, member RAS oncogene family
Database Link:	<a href="#">NP_004153</a> <a href="#">Entrez Gene 64633 Rat</a> <a href="#">Entrez Gene 271457 Mouse</a> <a href="#">Entrez Gene 5868 Human</a> <a href="#">P20339</a>
Background:	Ras-related protein Rab-5A is a protein that in humans is encoded by the RAB5A gene. It is rate-limiting for homotypic early endosome fusion. It required for the fusion of plasma membranes and early endosomes; as well as contributes to the regulation of filopodia extension.
Synonyms:	RAB5
Protein Families:	Druggable Genome



[View online »](#)

Protein Pathways: Amyotrophic lateral sclerosis (ALS), Endocytosis

**Product images:**



Gel: 10%SDS-PAGE

Lysate: 30  $\mu$ g

Lane 1-2: 231 cells

Human fetal brain tissue

Primary antibody: TA321627 (RAB5A Antibody) at dilution 1/600

Secondary antibody: Goat anti rabbit IgG at 1/8000 dilution

Exposure time: 1 minute