

Product datasheet for **TA321625S**

Granzyme B (GZMB) Rabbit Polyclonal Antibody

Product data:

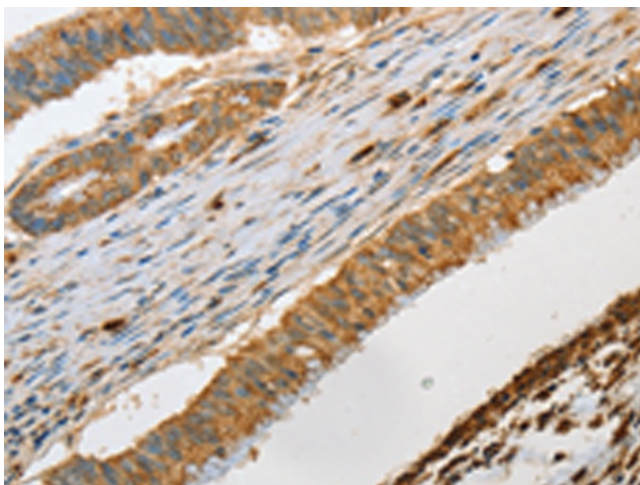
Product Type:	Primary Antibodies
Applications:	IHC
Recommended Dilution:	IHC: 50-200 Positive control: Human colon cancer Predicted cell location: Cytoplasm
Reactivity:	Human
Host:	Rabbit
Isotype:	IgG
Clonality:	Polyclonal
Immunogen:	Fusion protein corresponding to a region derived from 21-247 amino acids of human granzyme B (granzyme 2, cytotoxic T-lymphocyte-associated serine esterase 1)
Formulation:	PBS pH7.3, 0.05% NaN ₃ , 50% glycerol
Purification:	Antigen affinity purification
Conjugation:	Unconjugated
Storage:	Store at -20°C as received.
Stability:	Stable for 12 months from date of receipt.
Gene Name:	granzyme B
Database Link:	NP_004122 Entrez Gene 3002 Human P10144
Background:	Cytolytic T lymphocytes (CTL) and natural killer (NK) cells share the remarkable ability to recognize, bind, and lyse specific target cells. They are thought to protect their host by lysing cells bearing on their surface 'nonself' antigens, usually peptides or proteins resulting from infection by intracellular pathogens. The protein encoded by this gene is crucial for the rapid induction of target cell apoptosis by CTL in cell-mediated immune response.
Synonyms:	C11; CCPI; CGL-1; CGL1; CSP-B; CSPB; CTLA1; CTSLG1; HLP; SECT
Protein Families:	Druggable Genome, Protease



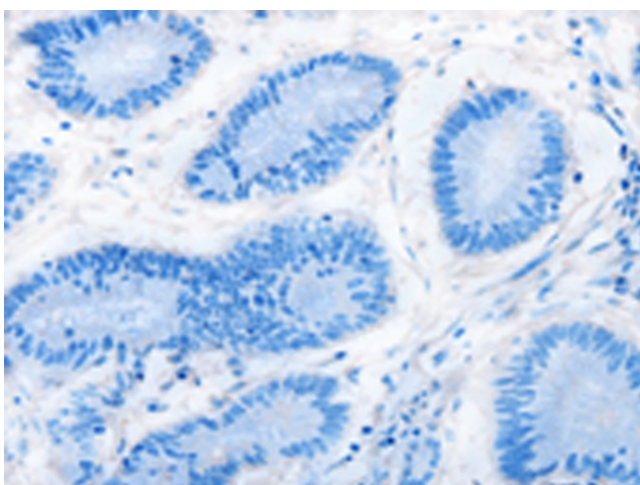
[View online »](#)

Protein Pathways: Allograft rejection, Autoimmune thyroid disease, Graft-versus-host disease, Natural killer cell mediated cytotoxicity, Type I diabetes mellitus

Product images:



Immunohistochemistry of paraffin-embedded Human colon cancer tissue using [TA321625] (GZMB Antibody) at dilution 1/30 (Original magnification: $\times 200$)



Immunohistochemistry of paraffin-embedded Human colon cancer tissue using [TA321625] (GZMB Antibody) at dilution 1/30, treated with fusion protein. (Original magnification: $\times 200$)