

## Product datasheet for **TA321622**

### **PYK2 (PTK2B) Rabbit Polyclonal Antibody**

#### **Product data:**

Product Type:	Primary Antibodies
Applications:	IF, IHC, WB
Recommended Dilution:	WB: 1:500-1000, IHC: 1:50-100, IF: 1:100-200
Reactivity:	Human, Mouse, Rat
Modifications:	Phospho-specific
Host:	Rabbit
Isotype:	IgG
Clonality:	Polyclonal
Immunogen:	Peptide sequence around phosphorylation site of tyrosine 402 (D-I-Y(p)-A-E) derived from Human Pyk2.
Formulation:	PBS pH7.3, 0.05% NaN <sub>3</sub> , 50% glycerol
Concentration:	lot specific
Purification:	Antigen affinity purification
Conjugation:	Unconjugated
Storage:	Store at -20°C as received.
Stability:	Stable for 12 months from date of receipt.
Predicted Protein Size:	116 kDa
Gene Name:	protein tyrosine kinase 2 beta
Database Link:	<a href="#">NP_004094</a> <a href="#">Entrez Gene 19229 Mouse</a> <a href="#">Entrez Gene 50646 Rat</a> <a href="#">Entrez Gene 2185 Human</a> <a href="#">Q14289</a>

**Background:** Involved in calcium induced regulation of ion channel and activation of the map kinase signaling pathway. May represent an important signaling intermediate between neuropeptide activated receptors or neurotransmitters that increase calcium flux and the downstream signals that regulate neuronal activity. Interacts with the SH2 domain of Grb2. May phosphorylate the voltage-gated potassium channel protein Kv1.2. Its activation is highly correlated with the stimulation of c-Jun N-terminal kinase activity. Involved in osmotic stress-dependent SNCA 'Tyr-125' phosphorylation.



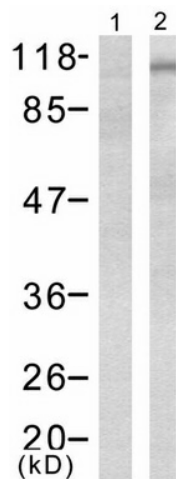
[View online »](#)

**Synonyms:** CADTK; CAKB; FADK2; FAK2; PKB; PTK; PYK2; RAFTK

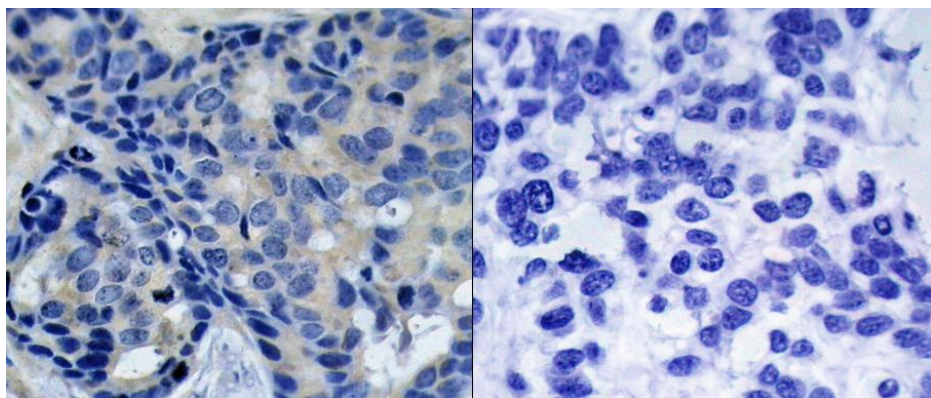
**Protein Families:** Druggable Genome, Protein Kinase

**Protein Pathways:** Calcium signaling pathway, Chemokine signaling pathway, GnRH signaling pathway, Leukocyte transendothelial migration, Natural killer cell mediated cytotoxicity

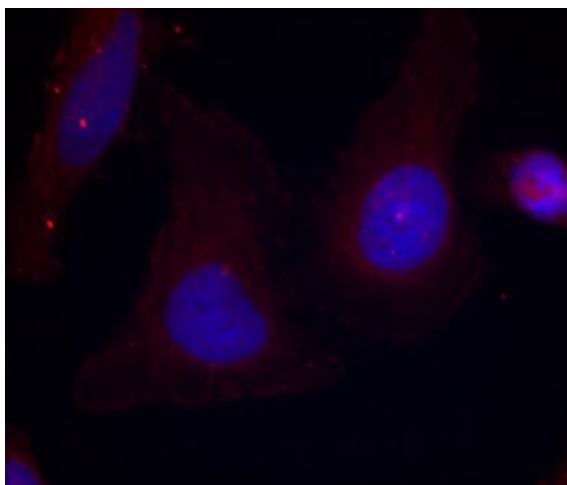
**Product images:**



Predicted band size: 116 kDa. Positive control: 293 cells untreated or treated with Serum lysate. Recommended dilution: 1/ 500-1000. (Gel: 8%SDS-PAGE Lane 1: 293 cells untreated with Serum lysate Lane 2: 293 cells r treated with Serum lysate Lysates: 30 ug per lane Primary antibody: 1/500 dilution Secondary antibody: Goat anti Rabbit IgG - H&L (HRP) at 1/10000 dilution Exposure time: 1 minute)



Predicted cell location: Cytoplasm; Nucleus; Cell membrane. Positive control: Human breast carcinoma tissue. Recommended dilution: 1/ 50-100 The image on the left is immunohistochemistry of paraffin-embedded human breast carcinoma tissue using PTK2B (Phospho-Tyr402) antibody at dilution 1/50, on the right is treated with the synthetic peptide. (Original magnification:x200)



Predicted cell location: Cytoplasm; Nucleus; Cell membrane. Positive control: HeLa cells. Recommended dilution: 1/ 100-200. The image is immunofluorescence of methanol-fixed HeLa cells using PTK2B (Phospho-Tyr402) antibody at dilution 1/100. (Original magnification:×200)