

## Product datasheet for **TA321617**

### p27 KIP 1 (CDKN1B) Rabbit Polyclonal Antibody

#### Product data:

Product Type:	Primary Antibodies
Applications:	IHC, WB
Recommended Dilution:	WB: 500-2000 WB positive control: Jurkat and Raji cell lysates IHC: 50-100 Positive control: Human prostate cancer Predicted cell location: Cytoplasm and Nucleus
Reactivity:	Human, Mouse
Host:	Rabbit
Isotype:	IgG
Clonality:	Polyclonal
Immunogen:	Full length fusion protein
Formulation:	PBS pH7.3, 0.05% NaN <sub>3</sub> , 50% glycerol
Concentration:	lot specific
Purification:	Antigen affinity purification
Conjugation:	Unconjugated
Storage:	Store at -20°C as received.
Stability:	Stable for 12 months from date of receipt.
Predicted Protein Size:	22 kDa
Gene Name:	cyclin-dependent kinase inhibitor 1B
Database Link:	<a href="#">NP_004055</a> <a href="#">Entrez Gene 12576 Mouse</a> <a href="#">Entrez Gene 1027 Human</a> <a href="#">P46527</a>



[View online »](#)

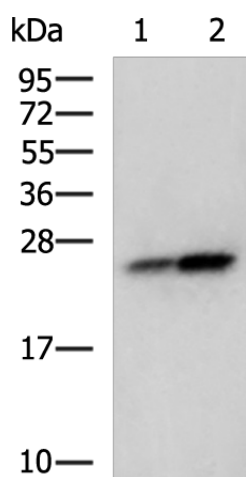
**Background:** This gene encodes a cyclin-dependent kinase inhibitor; which shares a limited similarity with CDK inhibitor CDKN1A/p21. The encoded protein binds to and prevents the activation of cyclin E-CDK2 or cyclin D-CDK4 complexes; and thus controls the cell cycle progression at G1. The degradation of this protein; which is triggered by its CDK dependent phosphorylation and subsequent ubiquitination by SCF complexes; is required for the cellular transition from quiescence to the proliferative state.

**Synonyms:** CDKN4; KIP1; MEN1B; MEN4; P27KIP1

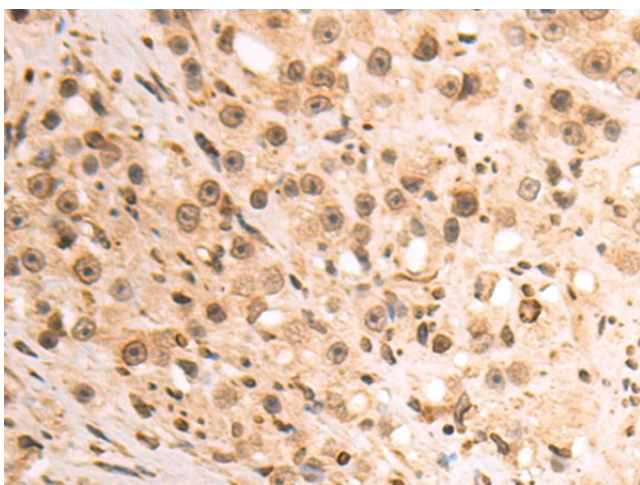
**Protein Families:** Druggable Genome

**Protein Pathways:** Cell cycle, Chronic myeloid leukemia, ErbB signaling pathway, Pathways in cancer, Prostate cancer, Small cell lung cancer

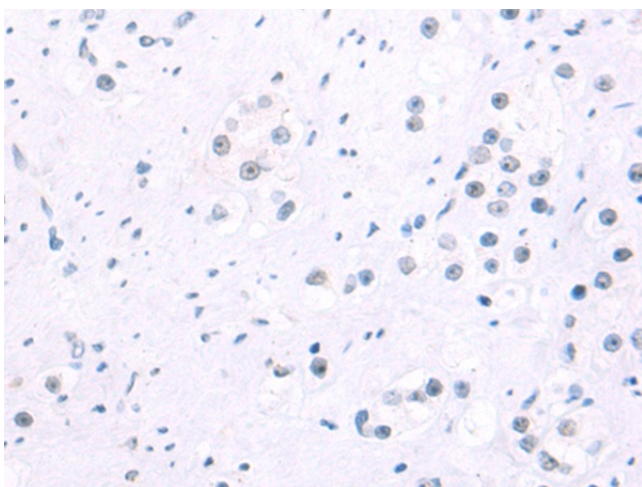
**Product images:**



Gel: 12%SDS-PAGE  
 Lysate: 40 µg  
 Lane 1-2: Jurkat and Raji cell lysates  
 Primary antibody: TA321617 (CDKN1B Antibody) at dilution 1/400  
 Secondary antibody: Goat anti rabbit IgG at 1/5000 dilution  
 Exposure time: 2 seconds



Immunohistochemistry of paraffin-embedded Human prostate cancer tissue using TA321617 (CDKN1B Antibody) at dilution 1/50 (Original magnification: ×200)



Immunohistochemistry of paraffin-embedded Human prostate cancer tissue using TA321617 (CDKN1B Antibody) at dilution 1/50, treated with fusion protein. (Original magnification: ×200)