

Product datasheet for **TA321616S**

beta 2 Microglobulin (B2M) Rabbit Polyclonal Antibody

Product data:

| | |
|-------------------------|--|
| Product Type: | Primary Antibodies |
| Applications: | IHC, WB |
| Recommended Dilution: | WB: 200-1000 WB positive control: Human kidney tissue and Raji cells IHC: 50-200 Positive control: Human esophagus cancer Predicted cell location: Cytoplasm and membrane |
| Reactivity: | Human |
| Host: | Rabbit |
| Isotype: | IgG |
| Clonality: | Polyclonal |
| Immunogen: | Full length fusion protein |
| Formulation: | PBS pH7.3, 0.05% NaN ₃ , 50% glycerol |
| Purification: | Antigen affinity purification |
| Conjugation: | Unconjugated |
| Storage: | Store at -20°C as received. |
| Stability: | Stable for 12 months from date of receipt. |
| Predicted Protein Size: | 14 kDa |
| Gene Name: | beta-2-microglobulin |
| Database Link: | NP_004039 Entrez Gene 567 Human P61769 |
| Background: | This gene encodes a serum protein found in association with the major histocompatibility complex (MHC) class I heavy chain on the surface of nearly all nucleated cells. The protein has a predominantly beta-pleated sheet structure that can form amyloid fibrils in some pathological conditions. A mutation in this gene has been shown to result in hypercatabolic hypoproteinemia. |
| Synonyms: | IMD43 |

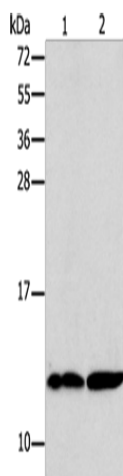


[View online »](#)

Protein Families: Druggable Genome, Secreted Protein

Protein Pathways: Antigen processing and presentation

Product images:



Gel: 15%SDS-PAGE

Lysate: 40 μ g

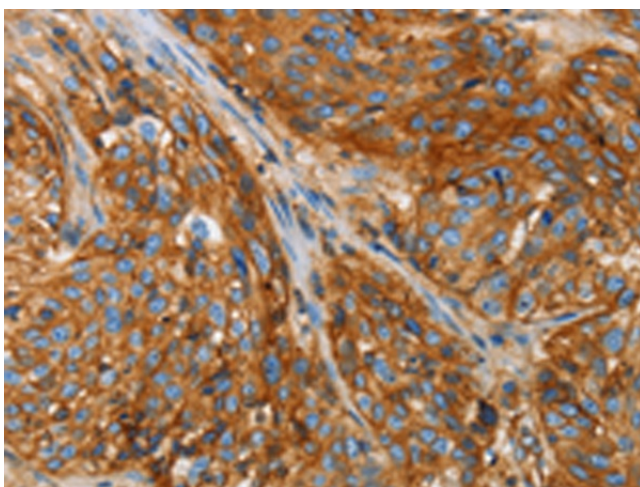
Lane 1-2: Human kidney tissue

Raji cells

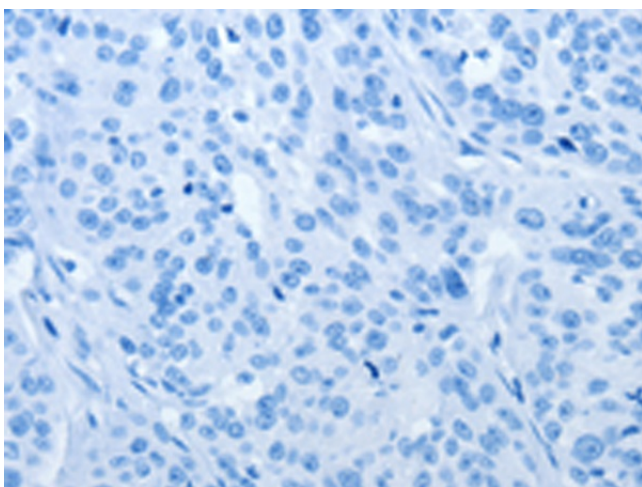
Primary antibody: [TA321616] (B2M Antibody) at dilution 1/250

Secondary antibody: Goat anti rabbit IgG at 1/8000 dilution

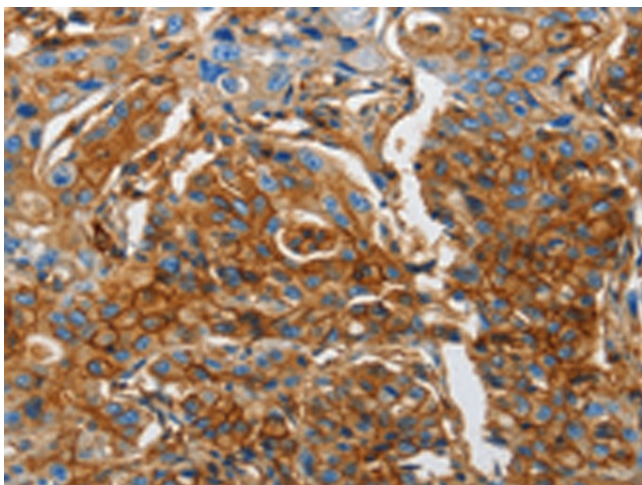
Exposure time: 20 seconds



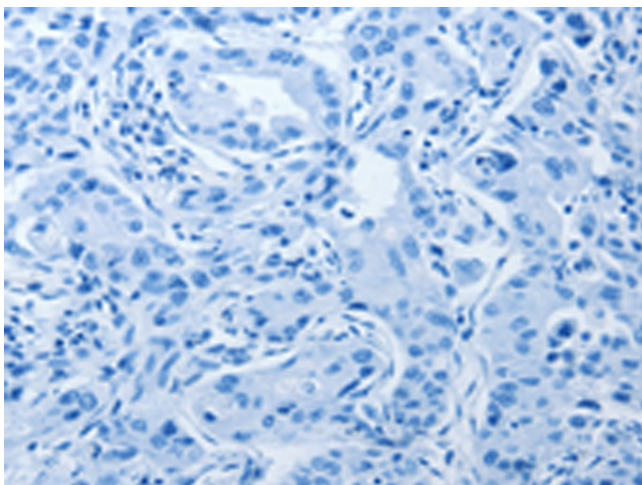
Immunohistochemistry of paraffin-embedded Human esophagus cancer tissue using [TA321616] (B2M Antibody) at dilution 1/25 (Original magnification: \times 200)



Immunohistochemistry of paraffin-embedded Human esophagus cancer tissue using [TA321616] (B2M Antibody) at dilution 1/25, treated with fusion protein. (Original magnification: $\times 200$)



Immunohistochemistry of paraffin-embedded Human lung cancer tissue using [TA321616] (B2M Antibody) at dilution 1/25 (Original magnification: $\times 200$)



Immunohistochemistry of paraffin-embedded Human lung cancer tissue using [TA321616] (B2M Antibody) at dilution 1/25, treated with fusion protein. (Original magnification: $\times 200$)