

## Product datasheet for **TA321615S**

### beta 2 Microglobulin (B2M) Rabbit Polyclonal Antibody

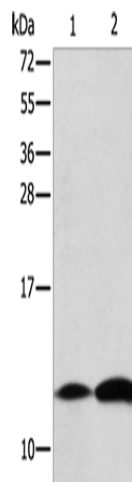
#### Product data:

Product Type:	Primary Antibodies
Applications:	WB
Recommended Dilution:	WB: 200-1000 WB positive control: Raji cells and human thyroid cancer tissue
Reactivity:	Human
Host:	Rabbit
Isotype:	IgG
Clonality:	Polyclonal
Immunogen:	Full length fusion protein
Formulation:	PBS pH7.3, 0.05% NaN <sub>3</sub> , 50% glycerol
Purification:	Antigen affinity purification
Conjugation:	Unconjugated
Storage:	Store at -20°C as received.
Stability:	Stable for 12 months from date of receipt.
Predicted Protein Size:	14 kDa
Gene Name:	beta-2-microglobulin
Database Link:	<a href="#">NP_004039</a> <a href="#">Entrez Gene 567 Human P61769</a>
Background:	This gene encodes a serum protein found in association with the major histocompatibility complex (MHC) class I heavy chain on the surface of nearly all nucleated cells. The protein has a predominantly beta-pleated sheet structure that can form amyloid fibrils in some pathological conditions. A mutation in this gene has been shown to result in hypercatabolic hypoproteinemia.
Synonyms:	IMD43
Protein Families:	Druggable Genome, Secreted Protein
Protein Pathways:	Antigen processing and presentation



[View online »](#)

## Product images:



Gel: 15%SDS-PAGE  
Lysate: 40  $\mu$ g  
Lane 1-2: Raji cells  
human thyroid cancer tissue  
Primary antibody: [TA321615] (B2M Antibody) at  
dilution 1/125  
Secondary antibody: Goat anti rabbit IgG at  
1/8000 dilution  
Exposure time: 10 seconds