

## Product datasheet for **TA321612**

### SOCS3 Rabbit Polyclonal Antibody

#### Product data:

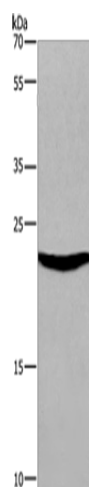
Product Type:	Primary Antibodies
Applications:	IHC, WB
Recommended Dilution:	WB: 500-2000 WB positive control: Mouse heart tissue IHC: 25-100 Positive control: Human liver cancer Predicted cell location: Cytoplasm
Reactivity:	Human, Mouse, Rat
Host:	Rabbit
Isotype:	IgG
Clonality:	Polyclonal
Immunogen:	Full length fusion protein
Formulation:	PBS pH7.3, 0.05% NaN <sub>3</sub> , 50% glycerol
Concentration:	lot specific
Purification:	Antigen affinity purification
Conjugation:	Unconjugated
Storage:	Store at -20°C as received.
Stability:	Stable for 12 months from date of receipt.
Gene Name:	suppressor of cytokine signaling 3
Database Link:	<a href="#">NP_003946</a> <a href="#">Entrez Gene 12702 Mouse</a> <a href="#">Entrez Gene 89829 Rat</a> <a href="#">Entrez Gene 9021 Human</a> <a href="#">O14543</a>



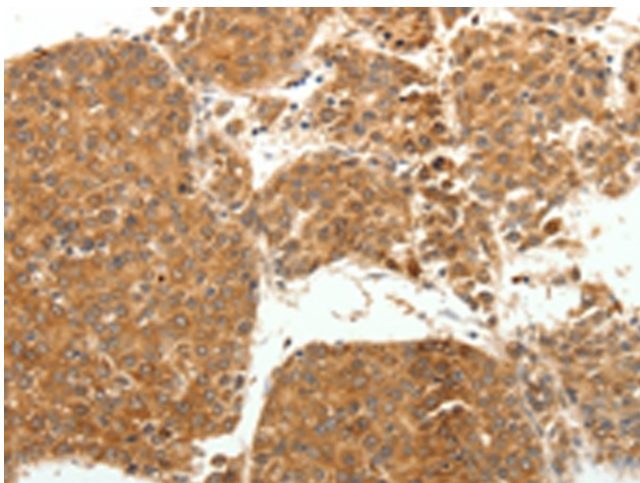
[View online »](#)

- Background:** This gene encodes a member of the STAT-induced STAT inhibitor (SSI); also known as suppressor of cytokine signaling (SOCS); family. SSI family members are cytokine-inducible negative regulators of cytokine signaling. The expression of this gene is induced by various cytokines; including IL6; IL10; and interferon (IFN)-gamma. The protein encoded by this gene can bind to JAK2 kinase; and inhibit the activity of JAK2 kinase. Studies of the mouse counterpart of this gene suggested the roles of this gene in the negative regulation of fetal liver hematopoiesis; and placental development.
- Synonyms:** ATOD4; CIS3; Cish3; SOCS-3; SSI-3; SSI3
- Protein Families:** Druggable Genome
- Protein Pathways:** Adipocytokine signaling pathway, Insulin signaling pathway, Jak-STAT signaling pathway, Type II diabetes mellitus, Ubiquitin mediated proteolysis

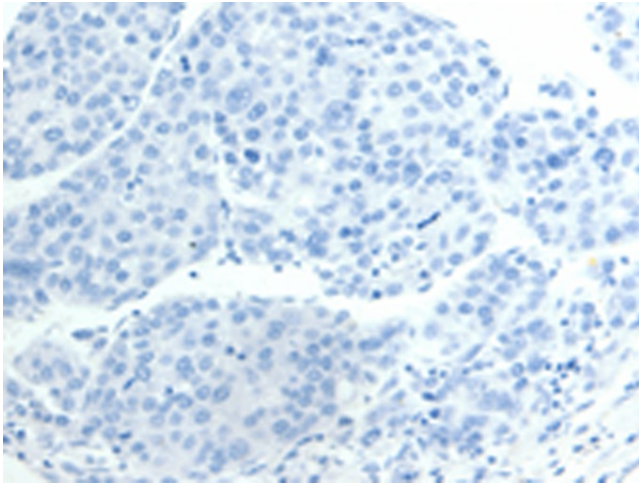
### Product images:



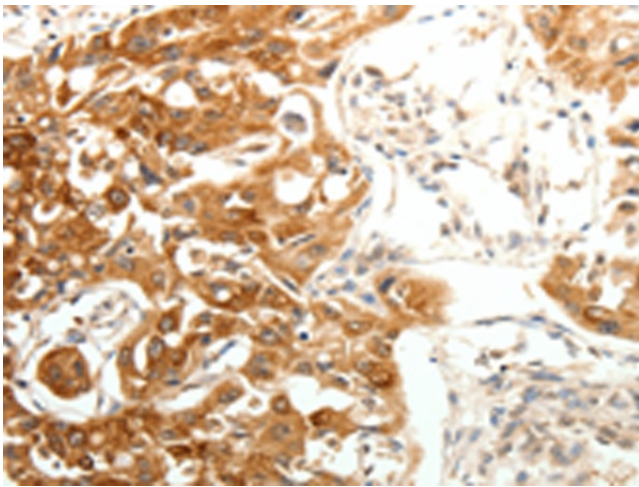
Gel: 8%SDS-PAGE  
Lysate: 40 µg  
Lane: Mouse heart tissue  
Primary antibody: TA321612 (SOCS3 Antibody) at dilution 1/300  
Secondary antibody: Goat anti rabbit IgG at 1/8000 dilution  
Exposure time: 20 seconds



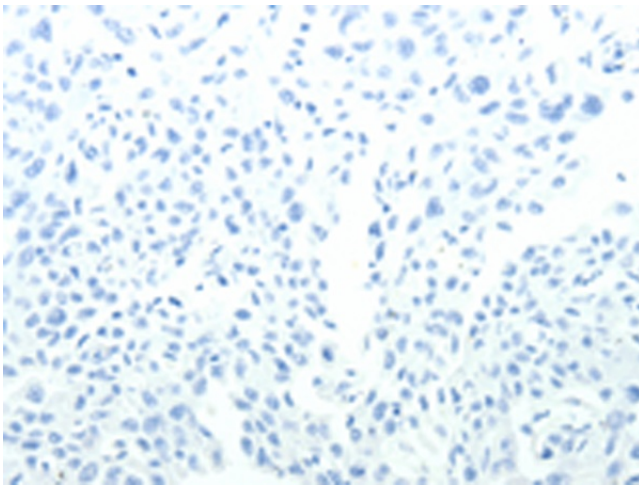
Immunohistochemistry of paraffin-embedded Human liver cancer tissue using TA321612 (SOCS3 Antibody) at dilution 1/20 (Original magnification: ×200)



Immunohistochemistry of paraffin-embedded Human liver cancer tissue using TA321612 (SOCS3 Antibody) at dilution 1/20, treated with fusion protein. (Original magnification:  $\times 200$ )



Immunohistochemistry of paraffin-embedded Human lung cancer tissue using TA321612 (SOCS3 Antibody) at dilution 1/20 (Original magnification:  $\times 200$ )



Immunohistochemistry of paraffin-embedded Human lung cancer tissue using TA321612 (SOCS3 Antibody) at dilution 1/20, treated with fusion protein. (Original magnification:  $\times 200$ )