

Product datasheet for **TA321611S**

NFkB Inducing Kinase NIK (MAP3K14) Rabbit Polyclonal Antibody

Product data:

Product Type:	Primary Antibodies
Applications:	IHC, WB
Recommended Dilution:	WB: 500-2000 WB positive control: HepG2 cell lysate IHC: 50-100 Positive control: Human prostate cancer Predicted cell location: Cytoplasm
Reactivity:	Human, Mouse
Host:	Rabbit
Isotype:	IgG
Clonality:	Polyclonal
Immunogen:	Fusion protein corresponding to C terminal 300 amino acids of human mitogen-activated protein kinase kinase kinase 14
Formulation:	PBS pH7.3, 0.05% NaN ₃ , 50% glycerol
Purification:	Antigen affinity purification
Conjugation:	Unconjugated
Storage:	Store at -20°C as received.
Stability:	Stable for 12 months from date of receipt.
Predicted Protein Size:	104 kDa
Gene Name:	mitogen-activated protein kinase kinase kinase 14
Database Link:	NP_003945 Entrez Gene 53859 Mouse Entrez Gene 9020 Human Q99558
Background:	This gene encodes mitogen-activated protein kinase kinase kinase 14; which is a serine/threonine protein-kinase. This kinase binds to TRAF2 and stimulates NF-kappaB activity. It shares sequence similarity with several other MAPKK kinases. It participates in an NF-kappaB-inducing signalling cascade common to receptors of the tumour-necrosis/nerve-growth factor (TNF/NGF) family and to the interleukin-1 type-I receptor.



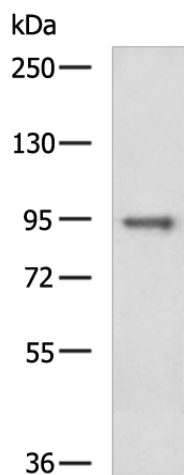
[View online »](#)

Synonyms: FTDCR1B; HS; HSNIK; NIK

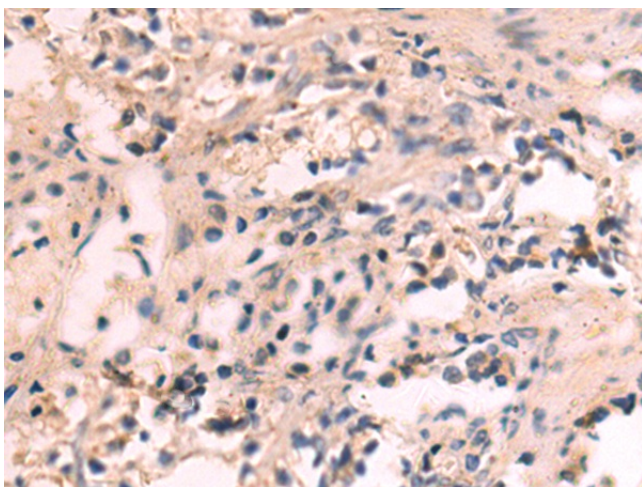
Protein Families: Druggable Genome, Protein Kinase

Protein Pathways: Apoptosis, Epithelial cell signaling in Helicobacter pylori infection, MAPK signaling pathway, T cell receptor signaling pathway

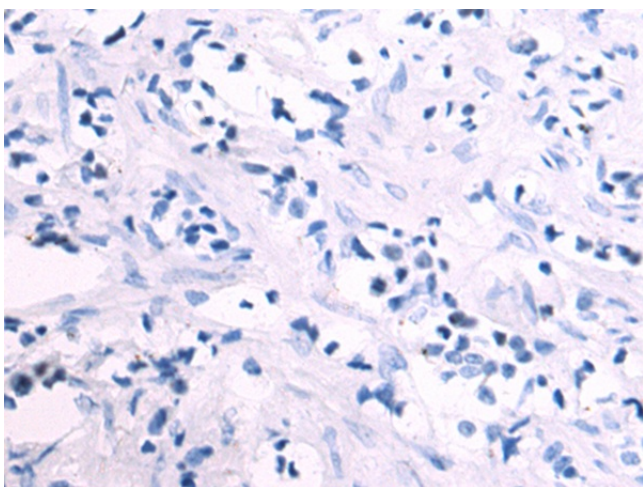
Product images:



Gel: 6%SDS-PAGE
Lysate: 40 µg
Lane: HepG2 cell lysate
Primary antibody: [TA321611] (MAP3K14 Antibody) at dilution 1/300
Secondary antibody: Goat anti rabbit IgG at 1/5000 dilution
Exposure time: 10 seconds



Immunohistochemistry of paraffin-embedded Human prostate cancer tissue using [TA321611] (MAP3K14 Antibody) at dilution 1/60 (Original magnification: ×200)



Immunohistochemistry of paraffin-embedded Human prostate cancer tissue using [TA321611] (MAP3K14 Antibody) at dilution 1/60, treated with fusion protein. (Original magnification: ×200)