

## Product datasheet for **TA321605S**

### ST2 (IL1RL1) Rabbit Polyclonal Antibody

#### Product data:

Product Type:	Primary Antibodies
Applications:	IHC, WB
Recommended Dilution:	WB: 1000-5000 WB positive control: Human fetal kidney and intestine tissue IHC: 50-200 Positive control: Human brain Predicted cell location: Cytoplasm
Reactivity:	Human
Host:	Rabbit
Isotype:	IgG
Clonality:	Polyclonal
Immunogen:	Fusion protein corresponding to C terminal 250 amino acids of human interleukin 1 receptor-like 1
Formulation:	PBS pH7.3, 0.05% NaN <sub>3</sub> , 50% glycerol
Concentration:	lot specific
Purification:	Antigen affinity purification
Conjugation:	Unconjugated
Storage:	Store at -20°C as received.
Stability:	Stable for 12 months from date of receipt.
Predicted Protein Size:	37 kDa
Gene Name:	interleukin 1 receptor like 1
Database Link:	<a href="#">NP_003847</a> <a href="#">Entrez Gene 9173 Human Q01638</a>



[View online »](#)

**Background:**

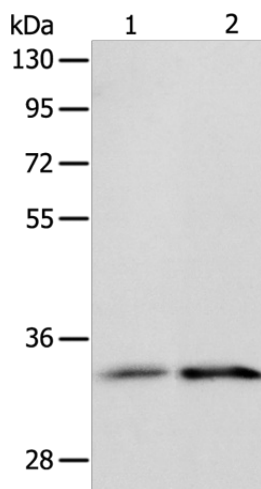
The protein encoded by this gene is a member of the interleukin 1 receptor family. Studies of the similar gene in mouse suggested that this receptor can be induced by proinflammatory stimuli; and may be involved in the function of helper T cells. This gene; interleukin 1 receptor; type I (IL1R1); interleukin 1 receptor; type II (IL1R2) and interleukin 1 receptor-like 2 (IL1RL2) form a cytokine receptor gene cluster in a region mapped to chromosome 2q12. Alternative splicing of this gene results in multiple transcript variants.

**Synonyms:**

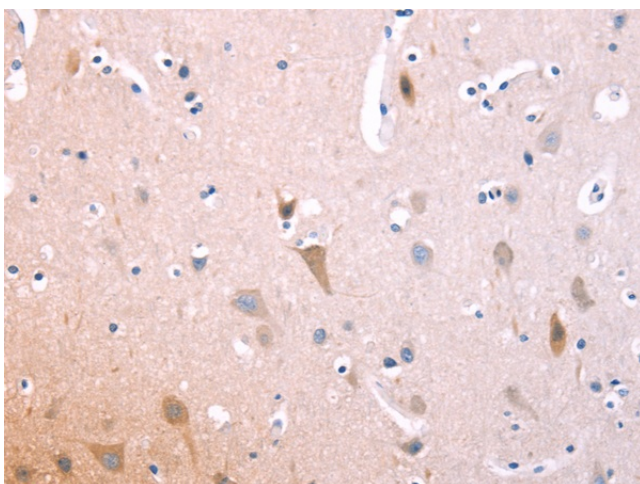
DER4; FIT-1; IL33R; ST2; ST2L; ST2V; T1

**Protein Families:**

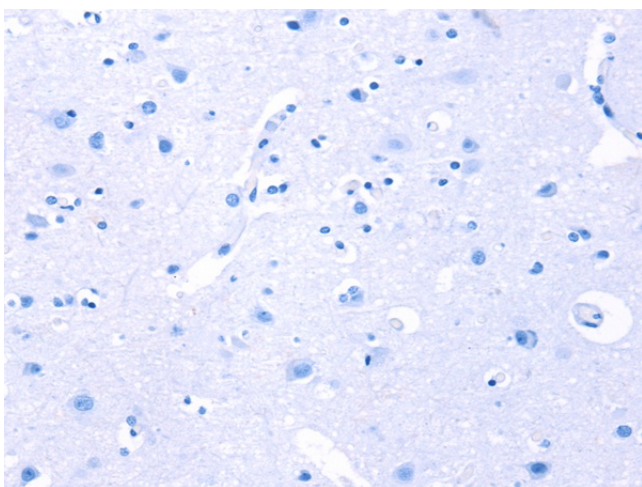
Druggable Genome, Secreted Protein, Transmembrane

**Product images:**


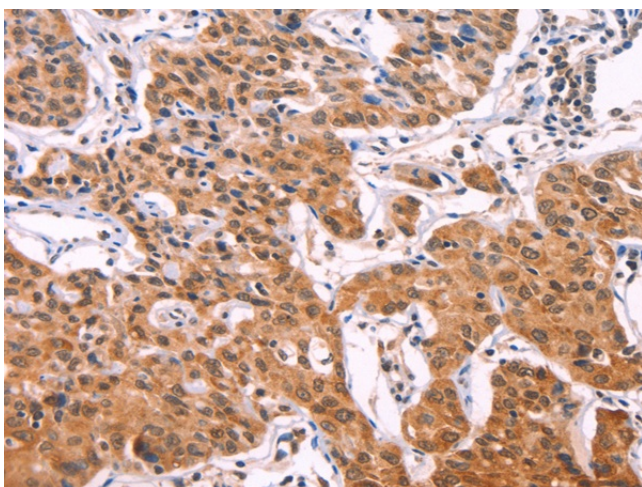
Gel: 10%SDS-PAGE  
 Lysate: 40 µg  
 Lane 1-2: Human fetal kidney tissue  
 Human intestine tissue  
 Primary antibody: [TA321605] (IL1RL1 Antibody)  
 at dilution 1/1100  
 Secondary antibody: Goat anti rabbit IgG at  
 1/8000 dilution  
 Exposure time: 2 minutes



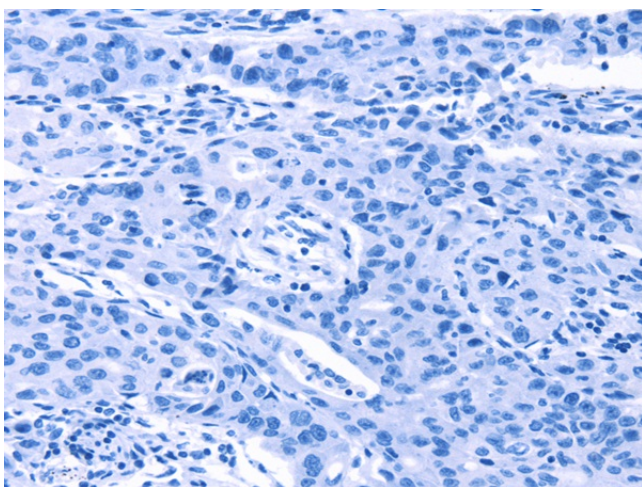
Immunohistochemistry of paraffin-embedded  
 Human brain tissue using [TA321605] (IL1RL1  
 Antibody) at dilution 1/70 (Original magnification:  
 ×200)



Immunohistochemistry of paraffin-embedded Human brain tissue using [TA321605] (IL1RL1 Antibody) at dilution 1/70, treated with fusion protein. (Original magnification:  $\times 200$ )



Immunohistochemistry of paraffin-embedded Human lung cancer tissue using [TA321605] (IL1RL1 Antibody) at dilution 1/70 (Original magnification:  $\times 200$ )



Immunohistochemistry of paraffin-embedded Human lung cancer tissue using [TA321605] (IL1RL1 Antibody) at dilution 1/70, treated with fusion protein. (Original magnification:  $\times 200$ )