

Product datasheet for **TA321605**

ST2 (IL1RL1) Rabbit Polyclonal Antibody

Product data:

Product Type:	Primary Antibodies
Applications:	IHC, WB
Recommended Dilution:	WB: 1000-5000 WB positive control: Human fetal kidney and intestine tissue IHC: 50-200 Positive control: Human brain Predicted cell location: Cytoplasm
Reactivity:	Human
Host:	Rabbit
Isotype:	IgG
Clonality:	Polyclonal
Immunogen:	Fusion protein corresponding to C terminal 250 amino acids of human interleukin 1 receptor-like 1
Formulation:	PBS pH7.3, 0.05% NaN ₃ , 50% glycerol
Concentration:	lot specific
Purification:	Antigen affinity purification
Conjugation:	Unconjugated
Storage:	Store at -20°C as received.
Stability:	Stable for 12 months from date of receipt.
Predicted Protein Size:	37 kDa
Gene Name:	interleukin 1 receptor like 1
Database Link:	NP_003847 Entrez Gene 9173 Human Q01638



[View online »](#)

Background:

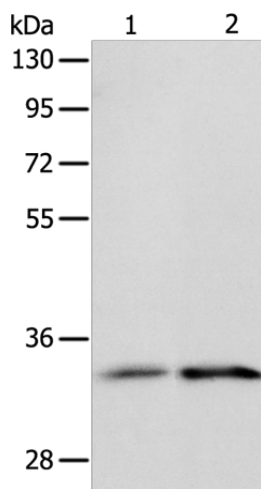
The protein encoded by this gene is a member of the interleukin 1 receptor family. Studies of the similar gene in mouse suggested that this receptor can be induced by proinflammatory stimuli; and may be involved in the function of helper T cells. This gene; interleukin 1 receptor; type I (IL1R1); interleukin 1 receptor; type II (IL1R2) and interleukin 1 receptor-like 2 (IL1RL2) form a cytokine receptor gene cluster in a region mapped to chromosome 2q12. Alternative splicing of this gene results in multiple transcript variants.

Synonyms:

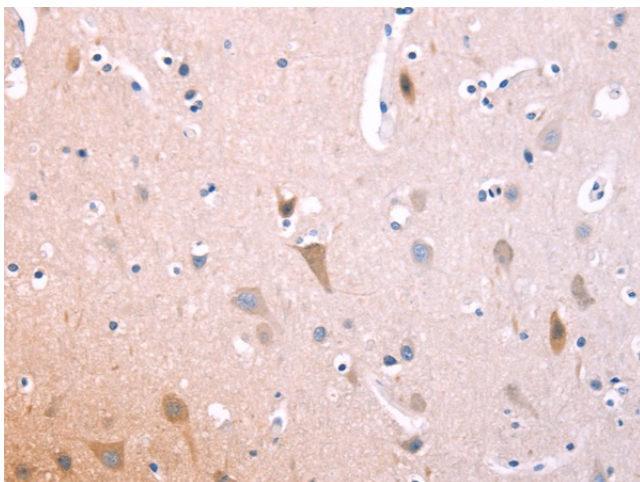
DER4; FIT-1; IL33R; ST2; ST2L; ST2V; T1

Protein Families:

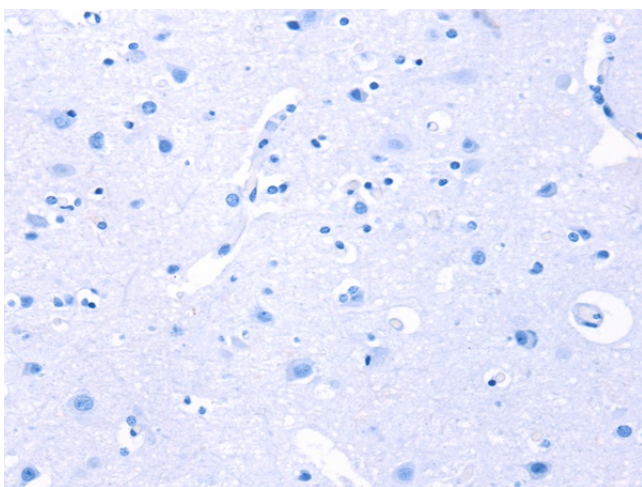
Druggable Genome, Secreted Protein, Transmembrane

Product images:

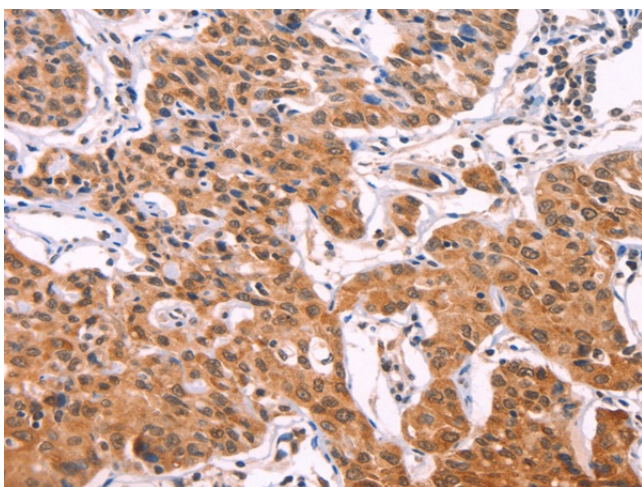
Gel: 10%SDS-PAGE
Lysate: 40 µg
Lane 1-2: Human fetal kidney tissue
Human intestine tissue
Primary antibody: TA321605 (IL1RL1 Antibody) at dilution 1/1100
Secondary antibody: Goat anti rabbit IgG at 1/8000 dilution
Exposure time: 2 minutes



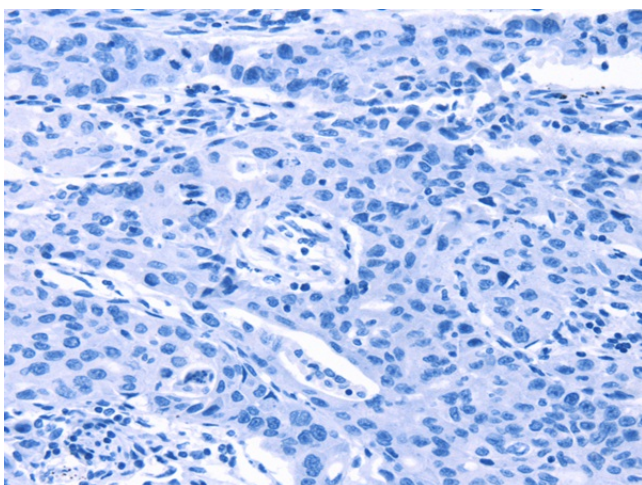
Immunohistochemistry of paraffin-embedded Human brain tissue using TA321605 (IL1RL1 Antibody) at dilution 1/70 (Original magnification: ×200)



Immunohistochemistry of paraffin-embedded Human brain tissue using TA321605 (IL1RL1 Antibody) at dilution 1/70, treated with fusion protein. (Original magnification: x200)



Immunohistochemistry of paraffin-embedded Human lung cancer tissue using TA321605 (IL1RL1 Antibody) at dilution 1/70 (Original magnification: x200)



Immunohistochemistry of paraffin-embedded Human lung cancer tissue using TA321605 (IL1RL1 Antibody) at dilution 1/70, treated with fusion protein. (Original magnification: x200)