

Product datasheet for **TA321603S**

FADD Rabbit Polyclonal Antibody

Product data:

Product Type:	Primary Antibodies
Applications:	IHC
Recommended Dilution:	IHC: 50-150 Positive control: Human thyroid cancer Predicted cell location: Cytoplasm
Reactivity:	Human
Host:	Rabbit
Isotype:	IgG
Clonality:	Polyclonal
Immunogen:	Full length fusion protein
Formulation:	PBS pH7.3, 0.05% NaN ₃ , 50% glycerol
Purification:	Antigen affinity purification
Conjugation:	Unconjugated
Storage:	Store at -20°C as received.
Stability:	Stable for 12 months from date of receipt.
Gene Name:	Fas associated via death domain
Database Link:	NP_003815 Entrez Gene 8772 Human Q13158
Background:	The protein encoded by this gene is an adaptor molecule that interacts with various cell surface receptors and mediates cell apoptotic signals. Through its C-terminal death domain; this protein can be recruited by TNFRSF6/Fas-receptor; tumor necrosis factor receptor; TNFRSF25; and TNFSF10/TRAIL-receptor; and thus it participates in the death signaling initiated by these receptors. Interaction of this protein with the receptors unmasks the N-terminal effector domain of this protein; which allows it to recruit caspase-8; and thereby activate the cysteine protease cascade. Knockout studies in mice also suggest the importance of this protein in early T cell development.
Synonyms:	GIG3; MORT1

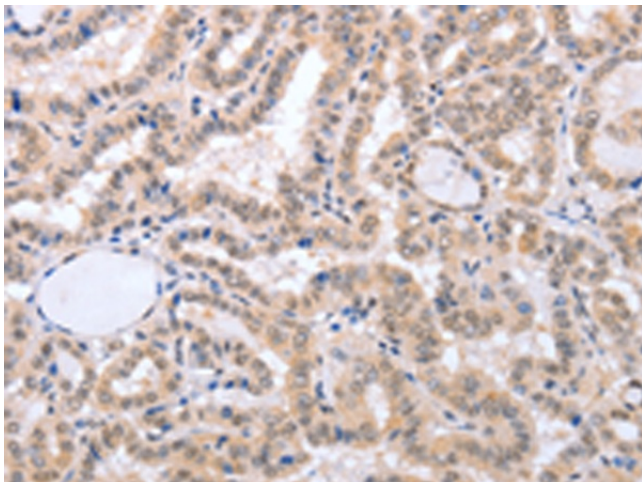


[View online »](#)

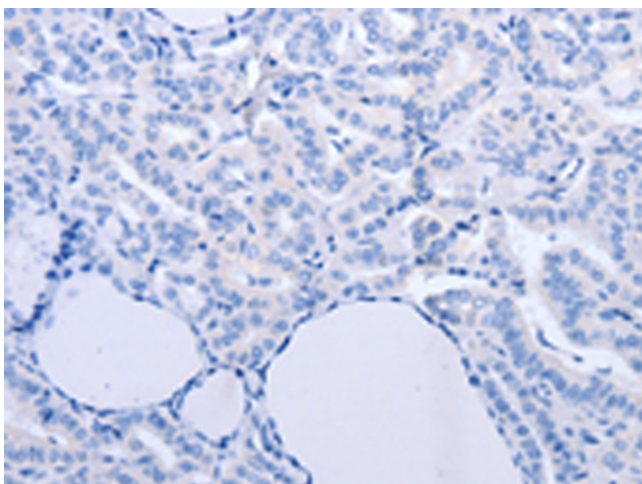
Protein Families: Druggable Genome

Protein Pathways: Alzheimer's disease, Apoptosis, Pathways in cancer, RIG-I-like receptor signaling pathway, Toll-like receptor signaling pathway

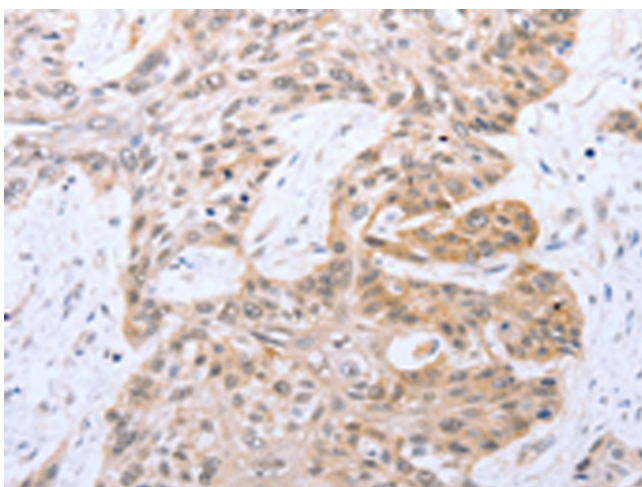
Product images:



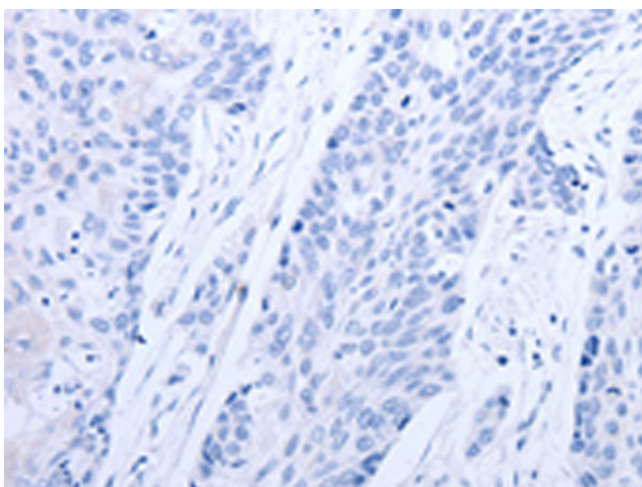
Immunohistochemistry of paraffin-embedded Human thyroid cancer tissue using [TA321603] (FADD Antibody) at dilution 1/50 (Original magnification: $\times 200$)



Immunohistochemistry of paraffin-embedded Human thyroid cancer tissue using [TA321603] (FADD Antibody) at dilution 1/50, treated with fusion protein. (Original magnification: $\times 200$)



Immunohistochemistry of paraffin-embedded Human esophagus cancer tissue using [TA321603] (FADD Antibody) at dilution 1/50 (Original magnification: $\times 200$)



Immunohistochemistry of paraffin-embedded Human esophagus cancer tissue using [TA321603] (FADD Antibody) at dilution 1/50, treated with fusion protein. (Original magnification: $\times 200$)