

## Product datasheet for **TA321598**

### Alpha SNAP (NAPA) Rabbit Polyclonal Antibody

#### Product data:

Product Type:	Primary Antibodies
Applications:	IHC, WB
Recommended Dilution:	WB: 500-2000 WB positive control: Hela and Jurkat cells, mouse brain tissue and 293T cells IHC: 50-200 Positive control: Human colon cancer Predicted cell location: Cytoplasm
Reactivity:	Human, Mouse, Rat
Host:	Rabbit
Isotype:	IgG
Clonality:	Polyclonal
Immunogen:	Fusion protein corresponding to a region derived from 25-295 amino acids of human N-ethylmaleimide-sensitive factor attachment protein, alpha
Formulation:	PBS pH7.3, 0.05% NaN <sub>3</sub> , 50% glycerol
Concentration:	lot specific
Purification:	Antigen affinity purification
Conjugation:	Unconjugated
Storage:	Store at -20°C as received.
Stability:	Stable for 12 months from date of receipt.
Predicted Protein Size:	33 kDa
Gene Name:	NSF attachment protein alpha
Database Link:	<a href="#">NP_003818</a> <a href="#">Entrez Gene 108124 Mouse</a> <a href="#">Entrez Gene 140673 Rat</a> <a href="#">Entrez Gene 8775 Human</a> <a href="#">P54920</a>



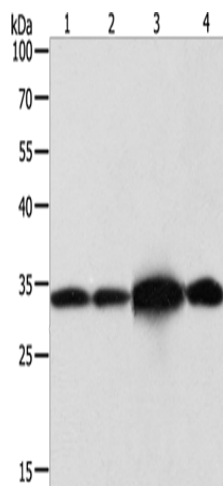
[View online »](#)

**Background:**

This gene encodes a member of the soluble NSF attachment protein (SNAP) family. SNAP proteins play a critical role in the docking and fusion of vesicles to target membranes as part of the 20S NSF-SNAP-SNARE complex. The encoded protein plays a role in the completion of membrane fusion by mediating the interaction of N-ethylmaleimide-sensitive factor (NSF) with the vesicle-associated and membrane-associated SNAP receptor (SNARE) complex; and stimulating the ATPase activity of NSF. Alternatively spliced transcript variants have been observed for this gene.

**Synonyms:**

SNAPA

**Product images:**

Gel: 12%SDS-PAGE

Lysate: 40 µg

Lane 1-4: HeLa cells

Jurkat cells

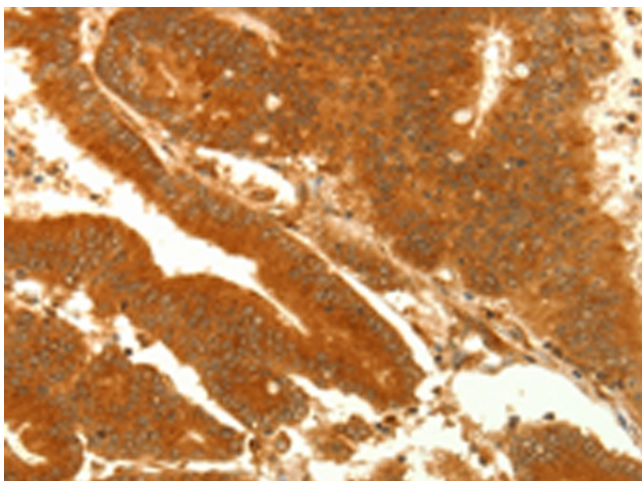
mouse brain tissue

293T cells

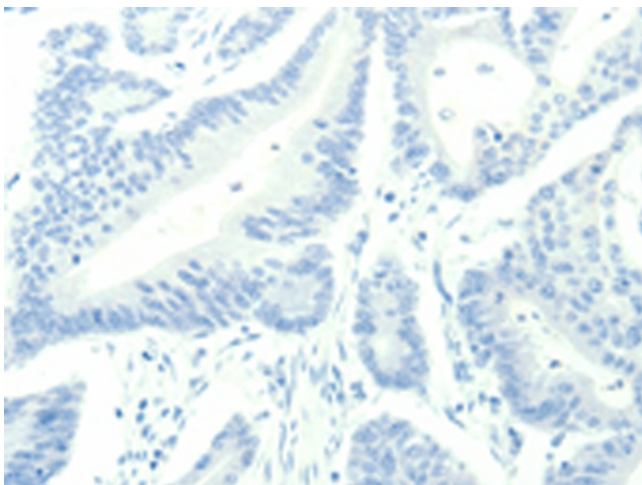
Primary antibody: TA321598 (NAPA Antibody) at dilution 1/500

Secondary antibody: Goat anti rabbit IgG at 1/8000 dilution

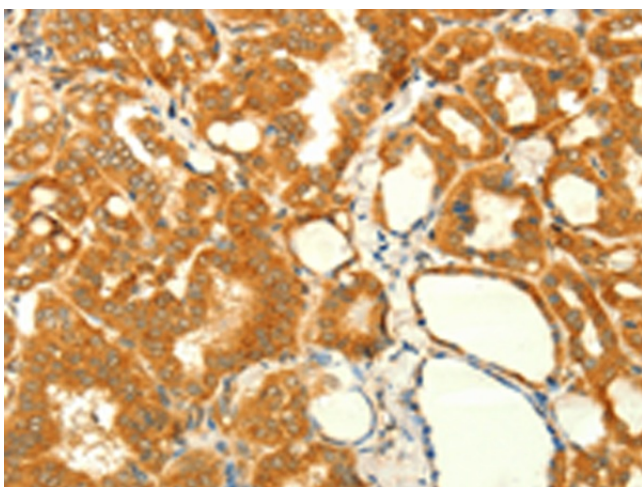
Exposure time: 3 seconds



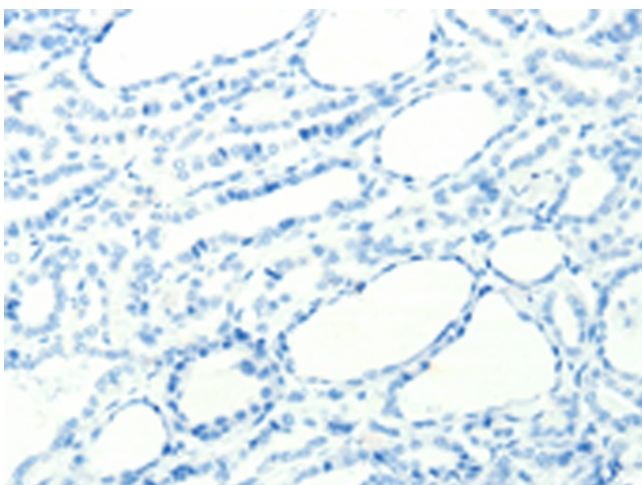
Immunohistochemistry of paraffin-embedded Human colon cancer tissue using TA321598 (NAPA Antibody) at dilution 1/35 (Original magnification: ×200)



Immunohistochemistry of paraffin-embedded Human colon cancer tissue using TA321598 (NAPA Antibody) at dilution 1/35, treated with fusion protein. (Original magnification:  $\times 200$ )



Immunohistochemistry of paraffin-embedded Human thyroid cancer tissue using TA321598 (NAPA Antibody) at dilution 1/35 (Original magnification:  $\times 200$ )



Immunohistochemistry of paraffin-embedded Human thyroid cancer tissue using TA321598 (NAPA Antibody) at dilution 1/35, treated with fusion protein. (Original magnification:  $\times 200$ )