

## Product datasheet for **TA321597**

### EDG6 (S1PR4) Rabbit Polyclonal Antibody

#### Product data:

Product Type:	Primary Antibodies
Applications:	WB
Recommended Dilution:	WB: 200-1000 WB positive control: Rat kidney tissue
Reactivity:	Human, Mouse, Rat
Host:	Rabbit
Isotype:	IgG
Clonality:	Polyclonal
Immunogen:	Synthetic peptide corresponding to a region derived from 352-367 amino acids of human sphingosine-1-phosphate receptor 4
Formulation:	PBS pH7.3, 0.05% NaN <sub>3</sub> , 50% glycerol
Concentration:	lot specific
Purification:	Antigen affinity purification
Conjugation:	Unconjugated
Storage:	Store at -20°C as received.
Stability:	Stable for 12 months from date of receipt.
Predicted Protein Size:	42 kDa
Gene Name:	sphingosine-1-phosphate receptor 4
Database Link:	<a href="#">NP_003766</a> <a href="#">Entrez Gene 13611 Mouse</a> <a href="#">Entrez Gene 314649 Rat</a> <a href="#">Entrez Gene 8698 Human</a> <a href="#">O95977</a>
Background:	This gene is a member of the endothelial differentiation; G-protein-coupled (EDG)) receptor gene family. EDG receptors bind lysophospholipids or lysosphingolipids as ligands; and are involved in cell signalling in many different cell types. This EDG receptor gene is intronless and is specifically expressed in the lymphoid tissue. Receptor for the lysosphingolipid sphingosine 1-phosphate (S1P). S1P is a bioactive lysophospholipid that elicits diverse physiological effect on most types of cells and tissues.
Synonyms:	EDG6; LPC1; S1P4; SLP4

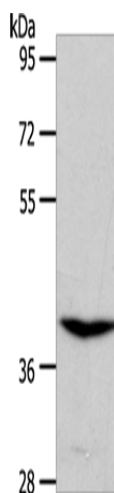


[View online »](#)

Protein Families: Druggable Genome, GPCR, Transmembrane

Protein Pathways: Neuroactive ligand-receptor interaction

### Product images:



Gel: 10%SDS-PAGE

Lysate: 50  $\mu$ g

Lane: Rat kidney tissue

Primary antibody: TA321597 (S1PR4 Antibody) at dilution 1/250

Secondary antibody: Goat anti rabbit IgG at 1/8000 dilution

Exposure time: 20 seconds