

Product datasheet for **TA321596**

EDG6 (S1PR4) Rabbit Polyclonal Antibody

Product data:

Product Type:	Primary Antibodies
Applications:	IHC, WB
Recommended Dilution:	WB: 500-2000 WB positive control: Rat kidney tissue IHC: 25-100 Positive control: Human liver cancer Predicted cell location: Cytoplasm
Reactivity:	Human, Mouse
Host:	Rabbit
Isotype:	IgG
Clonality:	Polyclonal
Immunogen:	Synthetic peptide corresponding to a region derived from 352-367 amino acids of human sphingosine-1-phosphate receptor 4
Formulation:	PBS pH7.3, 0.05% NaN ₃ , 50% glycerol
Concentration:	lot specific
Purification:	Antigen affinity purification
Conjugation:	Unconjugated
Storage:	Store at -20°C as received.
Stability:	Stable for 12 months from date of receipt.
Predicted Protein Size:	42 kDa
Gene Name:	sphingosine-1-phosphate receptor 4
Database Link:	NP_003766 Entrez Gene 13611 Mouse Entrez Gene 8698 Human O95977



[View online »](#)

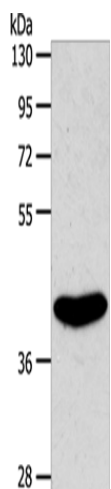
Background: This gene is a member of the endothelial differentiation; G-protein-coupled (EDG) receptor gene family. EDG receptors bind lysophospholipids or lysosphingolipids as ligands; and are involved in cell signalling in many different cell types. This EDG receptor gene is intronless and is specifically expressed in the lymphoid tissue. Receptor for the lysosphingolipid sphingosine 1-phosphate (S1P). S1P is a bioactive lysophospholipid that elicits diverse physiological effect on most types of cells and tissues.

Synonyms: EDG6; LPC1; S1P4; SLP4

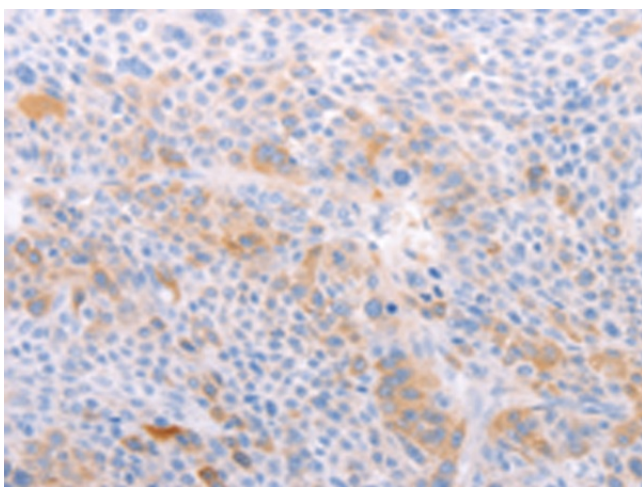
Protein Families: Druggable Genome, GPCR, Transmembrane

Protein Pathways: Neuroactive ligand-receptor interaction

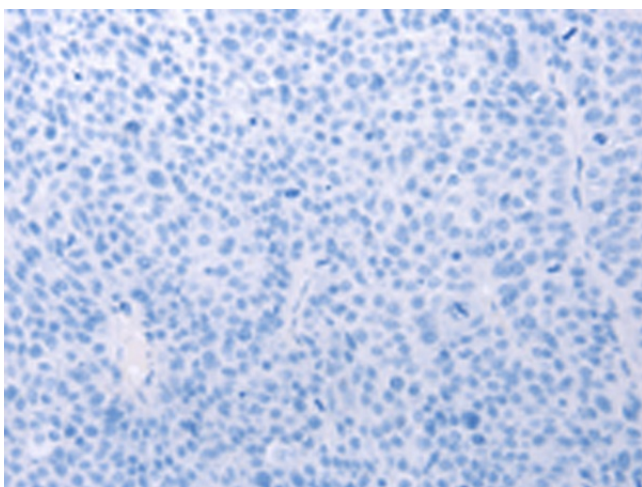
Product images:



Gel: 10%SDS-PAGE
Lysate: 50 µg
Lane: Rat kidney tissue
Primary antibody: TA321596 (S1PR4 Antibody) at dilution 1/800
Secondary antibody: Goat anti rabbit IgG at 1/8000 dilution
Exposure time: 20 seconds



Immunohistochemistry of paraffin-embedded Human liver cancer tissue using TA321596 (S1PR4 Antibody) at dilution 1/40 (Original magnification: ×200)



Immunohistochemistry of paraffin-embedded Human liver cancer tissue using TA321596 (S1PR4 Antibody) at dilution 1/40, treated with synthetic peptide. (Original magnification: $\times 200$)