

## Product datasheet for **TA321595**

### Beclin 1 (BECN1) Rabbit Polyclonal Antibody

#### Product data:

Product Type:	Primary Antibodies
Applications:	IHC, WB
Recommended Dilution:	WB: 500-2000 WB positive control: Mouse brain tissue, 293T cell lysates IHC: 50-100 Positive control: Human prostate cancer Predicted cell location: Cytoplasm
Reactivity:	Human, Mouse, Rat
Host:	Rabbit
Isotype:	IgG
Clonality:	Polyclonal
Immunogen:	Synthetic peptide corresponding to a region derived from 50-65 amino acids of Human beclin 1, autophagy related
Formulation:	PBS pH7.3, 0.05% NaN <sub>3</sub> , 50% glycerol
Concentration:	lot specific
Purification:	Antigen affinity purification
Conjugation:	Unconjugated
Storage:	Store at -20°C as received.
Stability:	Stable for 12 months from date of receipt.
Gene Name:	beclin 1
Database Link:	<a href="#">NP_003757</a> <a href="#">Entrez Gene 56208 Mouse</a> <a href="#">Entrez Gene 114558 Rat</a> <a href="#">Entrez Gene 8678 Human</a> <a href="#">Q14457</a>



[View online »](#)

**Background:**

Beclin-1 is a protein that in humans is encoded by the BECN1 gene. Beclin-1 is also known as autophagy-related gene (Atg) 6. Beclin-1 and its binding partner class III phosphoinositide 3-kinase (PI3K); also named Vps34; which are participates in the regulation of autophagy and has an important role in development; tumorigenesis; and neurodegeneration. Plays a central role in autophagy. Required for the abscission step in cytokinesis. May play a role in antiviral host defense. Protects against infection by a neurovirulent strain of Sindbis virus. Interacts with GOPC and GRID2. Interacts with AMBRA1. Forms a complex with PIK3C3 and PIK3R4 and either UVRAG and KIAA0226/Rubicon; or with ATG14. UVRAG and ATG14 form mutually exclusive complexes through direct competition for BECN1-binding.

**Synonyms:**

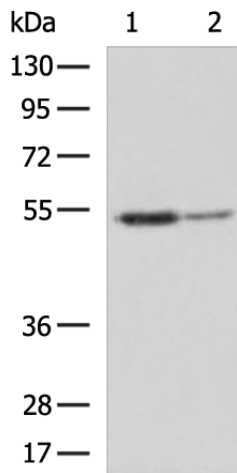
ATG6; beclin1; VPS30

**Protein Families:**

Druggable Genome

**Protein Pathways:**

Regulation of autophagy

**Product images:**

Gel: 8%SDS-PAGE

Lysate: 40 µg

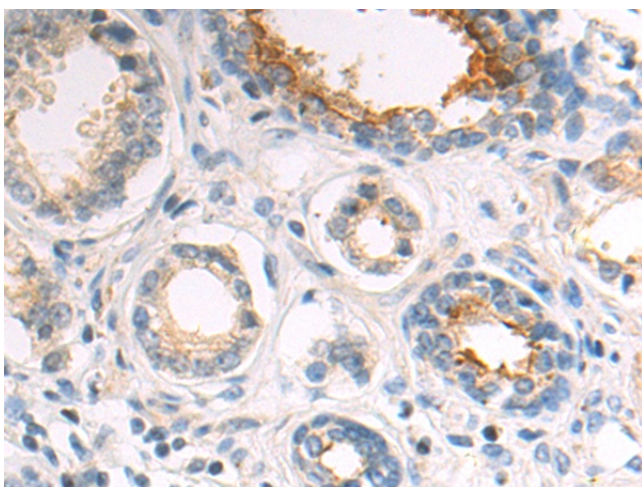
Lane 1-2: Mouse brain tissue

293T cell lysates

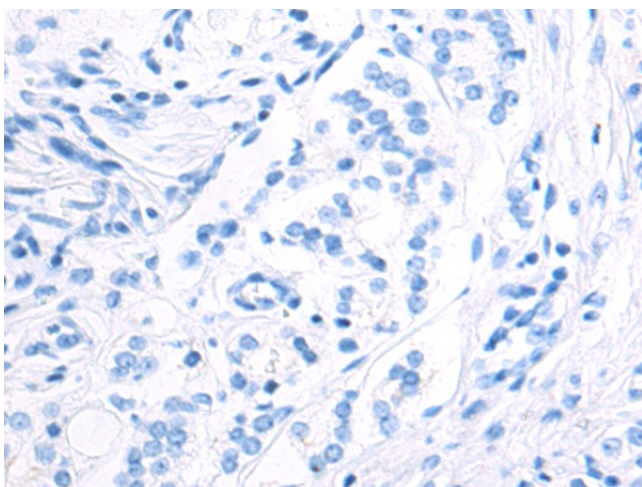
Primary antibody: TA321595 (BECN1 Antibody) at dilution 1/400

Secondary antibody: Goat anti rabbit IgG at 1/5000 dilution

Exposure time: 25 seconds



Immunohistochemistry of paraffin-embedded Human prostate cancer tissue using TA321595 (BECN1 Antibody) at dilution 1/50 (Original magnification:  $\times 200$ )



Immunohistochemistry of paraffin-embedded Human prostate cancer tissue using TA321595 (BECN1 Antibody) at dilution 1/50, treated with synthetic peptide. (Original magnification:  $\times 200$ )