

## Product datasheet for **TA321594S**

### Beclin 1 (BECN1) Rabbit Polyclonal Antibody

#### Product data:

Product Type:	Primary Antibodies
Applications:	IHC, WB
Recommended Dilution:	WB: 500-2000 WB positive control: Jurkat cell, 231 cell, NIH/3T3 cell, Human fetal brain tissue, 293T and Raji cell lysates IHC: 50-100 Positive control: Human prostate cancer Predicted cell location: Cytoplasm
Reactivity:	Human, Mouse, Rat
Host:	Rabbit
Isotype:	IgG
Clonality:	Polyclonal
Immunogen:	Synthetic peptide corresponding to a region derived from 50-65 amino acids of Human Beclin-1
Formulation:	PBS pH7.3, 0.05% NaN <sub>3</sub> , 50% glycerol
Purification:	Antigen affinity purification
Conjugation:	Unconjugated
Storage:	Store at -20°C as received.
Stability:	Stable for 12 months from date of receipt.
Predicted Protein Size:	52 kDa
Gene Name:	beclin 1
Database Link:	<a href="#">NP_003757</a> <a href="#">Entrez Gene 56208 Mouse</a> <a href="#">Entrez Gene 114558 Rat</a> <a href="#">Entrez Gene 8678 Human</a> <a href="#">Q14457</a>

**Background:** Beclin-1 is a protein that in humans is encoded by the BECN1 gene. Beclin-1 is also known as autophagy-related gene (Atg) 6. Beclin-1 and its binding partner class III phosphoinositide 3-kinase (PI3K); also named Vps34; which are participates in the regulation of autophagy and has an important role in development; tumorigenesis; and neurodegeneration.



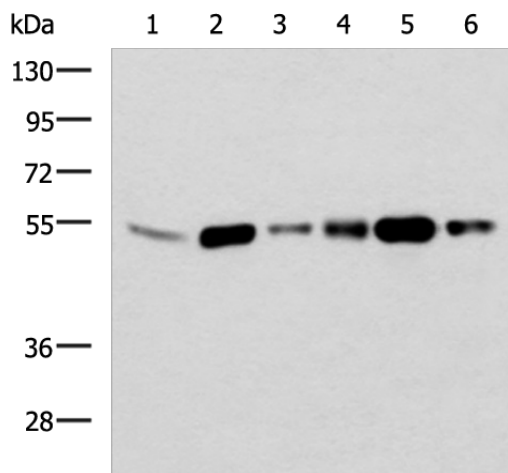
[View online »](#)

**Synonyms:** ATG6; beclin1; VPS30

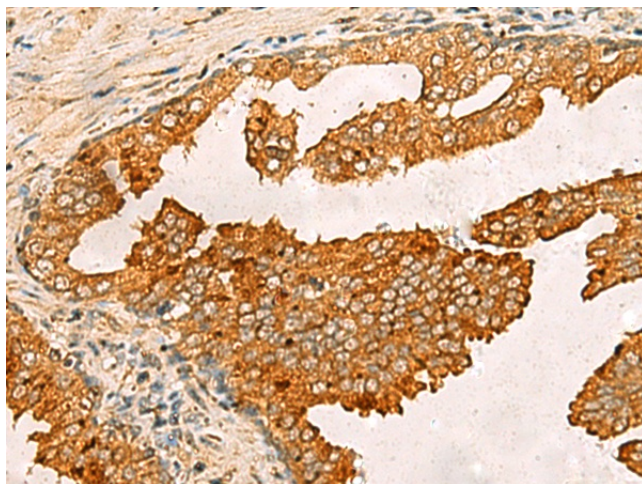
**Protein Families:** Druggable Genome

**Protein Pathways:** Regulation of autophagy

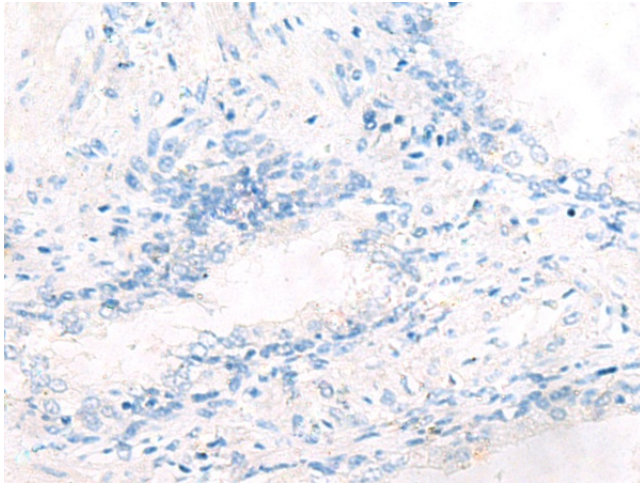
**Product images:**



Gel: 8%SDS-PAGE  
 Lysate: 40 µg  
 Lane 1-6: Jurkat cell  
 231 cell  
 NIH/3T3 cell  
 Human fetal brain tissue  
 293T and Raji cell lysates  
 Primary antibody: [TA321594] (BECN1 Antibody)  
 at dilution 1/700  
 Secondary antibody: Goat anti rabbit IgG at  
 1/5000 dilution  
 Exposure time: 1 minute



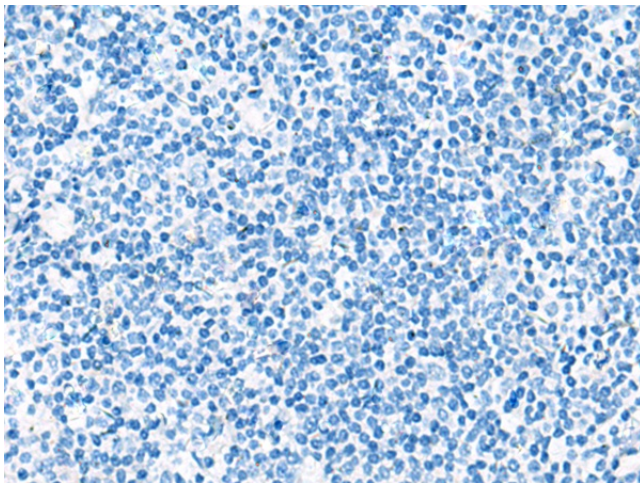
Immunohistochemistry of paraffin-embedded  
 Human prostate cancer tissue using [TA321594]  
 (BECN1 Antibody) at dilution 1/30 (Original  
 magnification: ×200)



Immunohistochemistry of paraffin-embedded Human prostate cancer tissue using [TA321594] (BECN1 Antibody) at dilution 1/30, treated with synthetic peptide. (Original magnification:  $\times 200$ )



Immunohistochemistry of paraffin-embedded Human tonsil tissue using [TA321594] (BECN1 Antibody) at dilution 1/30 (Original magnification:  $\times 200$ )



Immunohistochemistry of paraffin-embedded Human tonsil tissue using [TA321594] (BECN1 Antibody) at dilution 1/30, treated with synthetic peptide. (Original magnification:  $\times 200$ )