

Product datasheet for **TA321590**

Alkyl DHAP synthase (AGPS) Rabbit Polyclonal Antibody

Product data:

Product Type:	Primary Antibodies
Applications:	IHC
Recommended Dilution:	IHC: 25-100 Positive control: Human gastric cancer Predicted cell location: Cytoplasm
Reactivity:	Human, Mouse, Rat
Host:	Rabbit
Isotype:	IgG
Clonality:	Polyclonal
Immunogen:	Fusion protein corresponding to C terminal 300 amino acids of human alkylglycerone phosphate synthase
Formulation:	PBS pH7.3, 0.05% NaN ₃ , 50% glycerol
Concentration:	lot specific
Purification:	Antigen affinity purification
Conjugation:	Unconjugated
Storage:	Store at -20°C as received.
Stability:	Stable for 12 months from date of receipt.
Gene Name:	alkylglycerone phosphate synthase
Database Link:	NP_003650 Entrez Gene 84114 Rat Entrez Gene 228061 Mouse Entrez Gene 8540 Human O00116

Background: This gene is a member of the FAD-binding oxidoreductase/transferase type 4 family. It encodes a protein that catalyzes the second step of ether lipid biosynthesis in which acyl-dihydroxyacetonephosphate (DHAP) is converted to alkyl-DHAP by the addition of a long chain alcohol and the removal of a long-chain acid anion. The protein is localized to the inner aspect of the peroxisomal membrane and requires FAD as a cofactor. Mutations in this gene have been associated with rhizomelic chondrodysplasia punctata, type 3 and Zellweger syndrome.

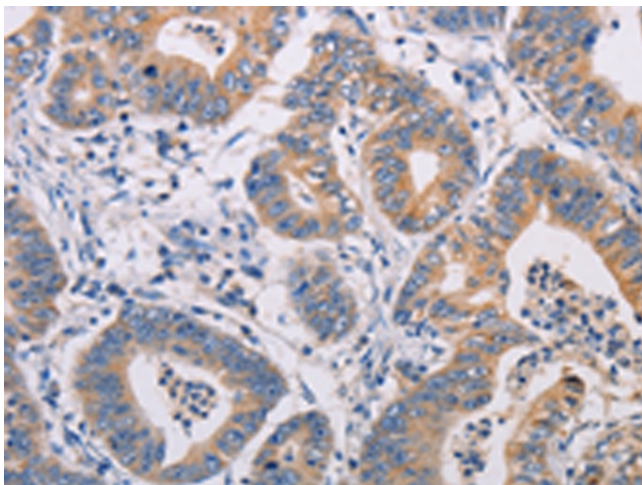


[View online »](#)

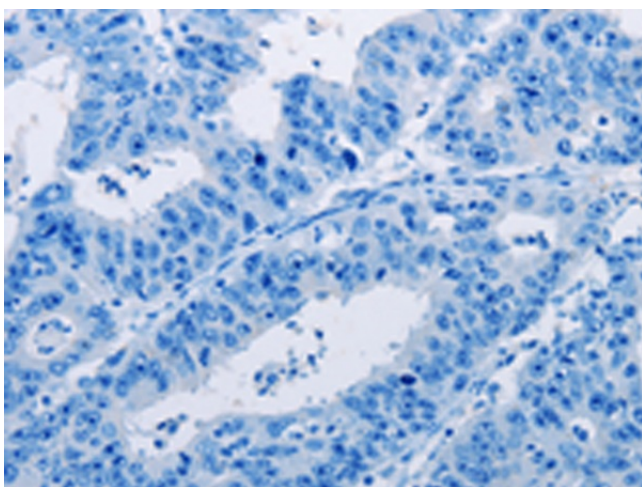
Synonyms: ADAP-S; ADAS; ADHAPS; ADPS; ALDHPSY; RCDP3

Protein Pathways: Ether lipid metabolism, Metabolic pathways

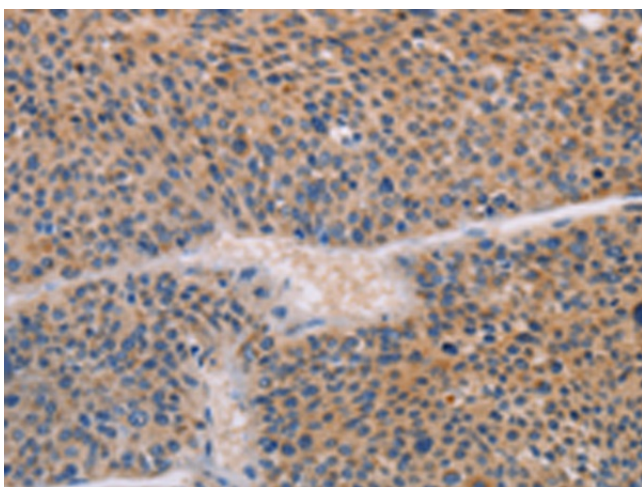
Product images:



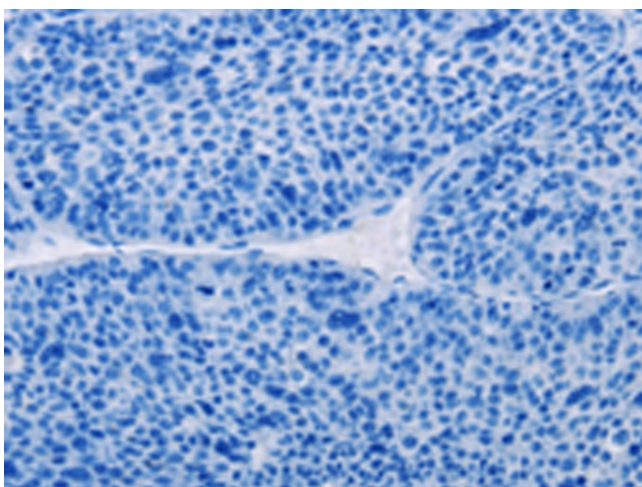
Immunohistochemistry of paraffin-embedded Human gastric cancer tissue using TA321590 (AGPS Antibody) at dilution 1/25 (Original magnification: $\times 200$)



Immunohistochemistry of paraffin-embedded Human gastric cancer tissue using TA321590 (AGPS Antibody) at dilution 1/25, treated with fusion protein. (Original magnification: $\times 200$)



Immunohistochemistry of paraffin-embedded Human liver cancer tissue using TA321590 (AGPS Antibody) at dilution 1/25 (Original magnification: $\times 200$)



Immunohistochemistry of paraffin-embedded Human liver cancer tissue using TA321590 (AGPS Antibody) at dilution 1/25, treated with fusion protein. (Original magnification: $\times 200$)