

Product datasheet for **TA321588**

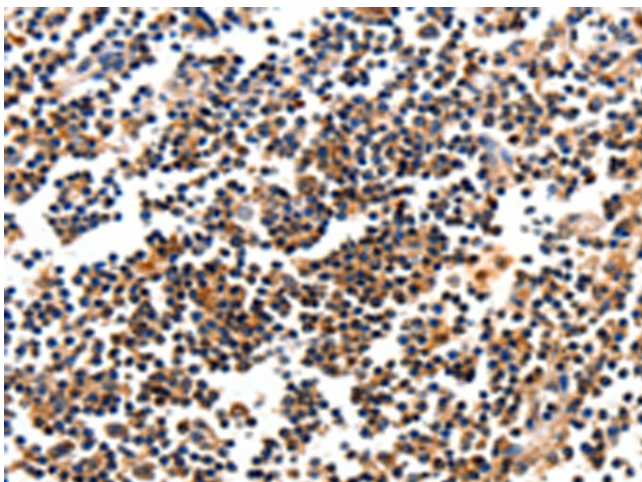
CaMKI (CAMK1) Rabbit Polyclonal Antibody

Product data:

Product Type:	Primary Antibodies
Applications:	IHC
Recommended Dilution:	IHC: 10-50 Positive control: Human tonsil Predicted cell location: Cytoplasm, Nucleus
Reactivity:	Human, Mouse, Rat
Host:	Rabbit
Isotype:	IgG
Clonality:	Polyclonal
Immunogen:	Fusion protein corresponding to a region derived from 20-276 amino acids of human calcium/calmodulin-dependent protein kinase I
Formulation:	PBS pH7.3, 0.05% NaN ₃ , 50% glycerol
Concentration:	lot specific
Purification:	Antigen affinity purification
Conjugation:	Unconjugated
Storage:	Store at -20°C as received.
Stability:	Stable for 12 months from date of receipt.
Gene Name:	calcium/calmodulin dependent protein kinase I
Database Link:	NP_003647 Entrez Gene 52163 Mouse Entrez Gene 171503 Rat Entrez Gene 8536 Human Q14012
Background:	Calcium/calmodulin-dependent protein kinase I is expressed in many tissues and is a component of a calmodulin-dependent protein kinase cascade. Calcium/calmodulin directly activates calcium/calmodulin-dependent protein kinase I by binding to the enzyme and indirectly promotes the phosphorylation and synergistic activation of the enzyme by calcium/calmodulin-dependent protein kinase I kinase.
Synonyms:	CAMKI
Protein Families:	Druggable Genome, Protein Kinase



[View online »](#)

Product images:

Immunohistochemistry of paraffin-embedded Human tonsil tissue using TA321588 (CAMK1 Antibody) at dilution 1/10 (Original magnification: ×200)



Immunohistochemistry of paraffin-embedded Human tonsil tissue using TA321588 (CAMK1 Antibody) at dilution 1/10, treated with fusion protein. (Original magnification: ×200)