

Product datasheet for **TA321582**

SLC7A5 Rabbit Polyclonal Antibody

Product data:

Product Type:	Primary Antibodies
Applications:	WB
Recommended Dilution:	WB: 200-1000 WB positive control: HepG2 and A549 cell lysates
Reactivity:	Human
Host:	Rabbit
Isotype:	IgG
Clonality:	Polyclonal
Immunogen:	Synthetic peptide corresponding to a region derived from 16-34 amino acids of Human Solute carrier family 7 member 5
Formulation:	PBS pH7.3, 0.05% NaN ₃ , 50% glycerol
Concentration:	lot specific
Purification:	Antigen affinity purification
Conjugation:	Unconjugated
Storage:	Store at -20°C as received.
Stability:	Stable for 12 months from date of receipt.
Predicted Protein Size:	55 kDa
Gene Name:	solute carrier family 7 member 5
Database Link:	NP_003477 Entrez Gene 8140 Human Q01650



[View online »](#)

Background:

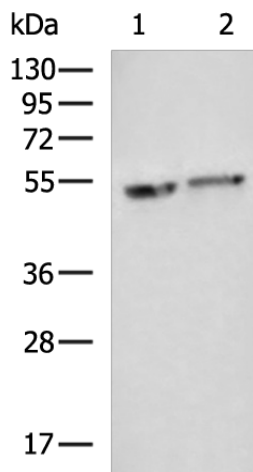
Solute carrier family 7 member 5 also known as large neutral amino acids transporter small subunit 1 is a protein that in humans is encoded by the SLC7A5 gene. It is sodium-independent; high-affinity transport of large neutral amino acids such as phenylalanine; tyrosine; leucine; arginine and tryptophan; when associated with SLC3A2/4F2hc. It is involved in cellular amino acid uptake and the transport of L-DOPA across the blood-brain barrier; and that of thyroid hormones triiodothyronine (T3) and thyroxine (T4) across the cell membrane in tissues such as placenta. Acts as an amino acid exchanger and plays a role in neuronal cell proliferation (neurogenesis) in brain.

Synonyms:

4F2LC; CD98; D16S469E; E16; hLAT1; LAT1; MPE16

Protein Families:

Druggable Genome, Transmembrane

Product images:

Gel: 8%SDS-PAGE

Lysate: 40 µg

Lane 1-2: HepG2 and A549 cell lysates

Primary antibody: TA321582 (SLC7A5 Antibody) at dilution 1/300

Secondary antibody: Goat anti rabbit IgG at 1/5000 dilution

Exposure time: 1 minute