

Product datasheet for **TA321580**

PAX8 Rabbit Polyclonal Antibody

Product data:

Product Type:	Primary Antibodies
Applications:	IHC, WB
Recommended Dilution:	ELISA: 1:1000-2000, WB: 1:200-1000, IHC: 1:25-100
Reactivity:	Human, Mouse, Rat
Host:	Rabbit
Isotype:	IgG
Clonality:	Polyclonal
Immunogen:	Fusion protein corresponding to C terminal 250 amino acids of human paired box 8
Formulation:	PBS pH7.3, 0.05% NaN ₃ , 50% glycerol
Concentration:	lot specific
Purification:	Antigen affinity purification
Conjugation:	Unconjugated
Storage:	Store at -20°C as received.
Stability:	Stable for 12 months from date of receipt.
Predicted Protein Size:	48 kDa
Gene Name:	paired box 8
Database Link:	NP_003457 Entrez Gene 18510 Mouse Entrez Gene 81819 Rat Entrez Gene 7849 Human Q06710

Background: This gene encodes a member of the paired box (PAX) family of transcription factors. Members of this gene family typically encode proteins that contain a paired box domain; an octapeptide; and a paired-type homeodomain. This nuclear protein is involved in thyroid follicular cell development and expression of thyroid-specific genes. Mutations in this gene have been associated with thyroid dysgenesis; thyroid follicular carcinomas and atypical follicular thyroid adenomas. Alternatively spliced transcript variants encoding different isoforms have been described.?

Synonyms: OTTHUMP00000158659; OTTHUMP00000158660; paired box 8; paired domain gene 8

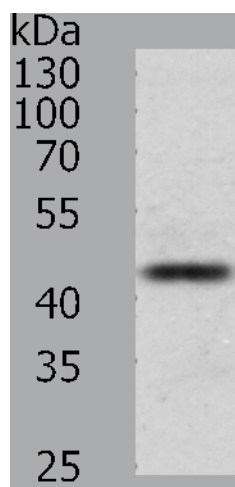


[View online »](#)

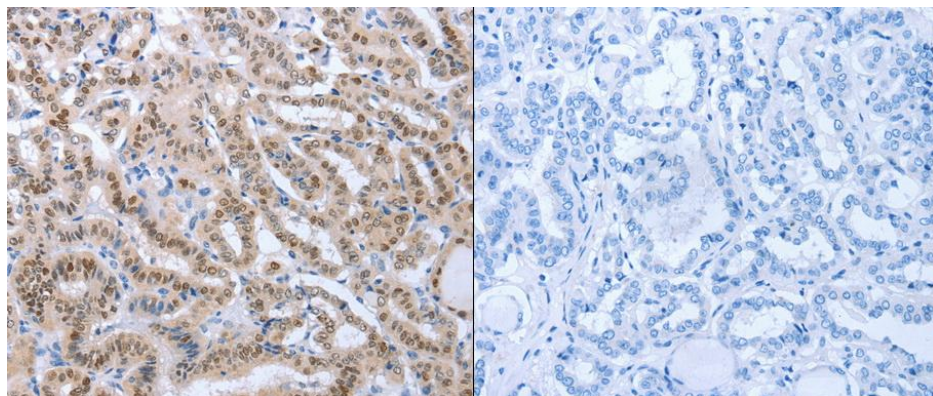
Protein Families: Druggable Genome, Transcription Factors

Protein Pathways: Pathways in cancer, Thyroid cancer

Product images:



Predicted band size: 48 kDa. Positive control: A549 cell lysate. Recommended dilution: 1/200-1000. (Gel: 10%SDS-PAGE Lysate: 40 ug per lane Primary antibody: 1/100 dilution Secondary antibody: Goat anti Rabbit IgG - H&L (HRP) at 1/10000 dilution Exposure time: 2 minutes)



Predicted cell location: Nucleus. Positive control: Human thyroid cancer tissue. Recommended dilution: 1/25-100 The image on the left is immunohistochemistry of paraffin-embedded human thyroid cancer tissue using PAX8 antibody at dilution 1/25, on the right is treated with the fusion protein. (Original magnification:x200)