

Product datasheet for **TA321579**

PAX8 Rabbit Polyclonal Antibody

Product data:

Product Type:	Primary Antibodies
Applications:	IHC, WB
Recommended Dilution:	WB: 200-1000 WB positive control: MCF7 cells and mouse brain tissue IHC: 15-50 Positive control: Human thyroid cancer Predicted cell location: Nucleus
Reactivity:	Human, Mouse, Rat
Host:	Rabbit
Isotype:	IgG
Clonality:	Polyclonal
Immunogen:	Fusion protein corresponding to C terminal 250 amino acids of human paired box 8
Formulation:	PBS pH7.3, 0.05% NaN ₃ , 50% glycerol
Concentration:	lot specific
Purification:	Antigen affinity purification
Conjugation:	Unconjugated
Storage:	Store at -20°C as received.
Stability:	Stable for 12 months from date of receipt.
Predicted Protein Size:	48 kDa
Gene Name:	paired box 8
Database Link:	NP_003457 Entrez Gene 18510 Mouse Entrez Gene 81819 Rat Entrez Gene 7849 Human Q06710



[View online »](#)

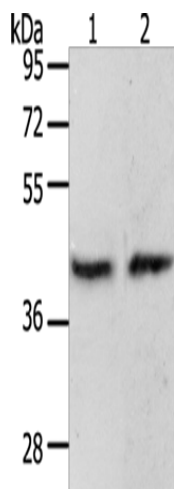
Background: This gene encodes a member of the paired box (PAX) family of transcription factors. Members of this gene family typically encode proteins that contain a paired box domain; an octapeptide; and a paired-type homeodomain. This nuclear protein is involved in thyroid follicular cell development and expression of thyroid-specific genes. Mutations in this gene have been associated with thyroid dysgenesis; thyroid follicular carcinomas and atypical follicular thyroid adenomas. Alternatively spliced transcript variants encoding different isoforms have been described.?

Synonyms: OTTHUMP00000158659; OTTHUMP00000158660; paired box 8; paired domain gene 8

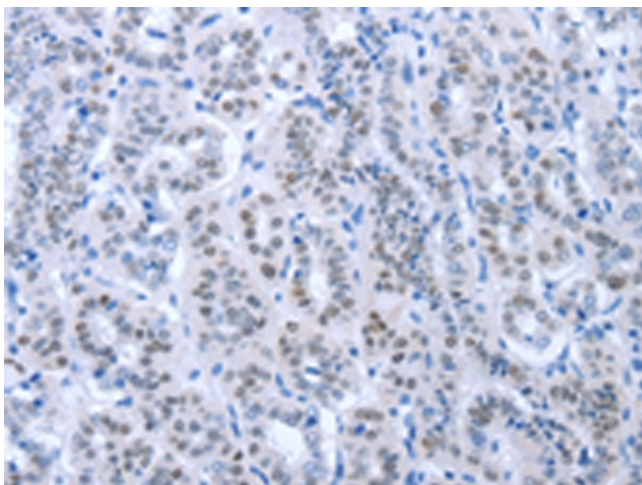
Protein Families: Druggable Genome, Transcription Factors

Protein Pathways: Pathways in cancer, Thyroid cancer

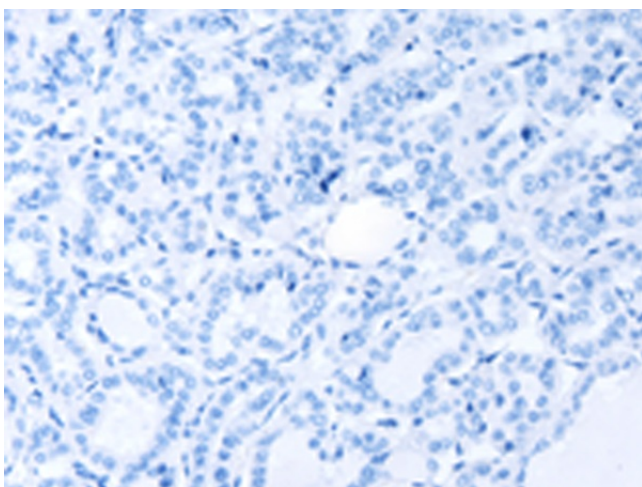
Product images:



Gel: 10%SDS-PAGE
Lysate: 40 µg
Lane 1-2: MCF7 cells
mouse brain tissue
Primary antibody: TA321579 (PAX8 Antibody) at dilution 1/250
Secondary antibody: Goat anti rabbit IgG at 1/8000 dilution
Exposure time: 2 minutes



Immunohistochemistry of paraffin-embedded Human thyroid cancer tissue using TA321579 (PAX8 Antibody) at dilution 1/35 (Original magnification: ×200)



Immunohistochemistry of paraffin-embedded Human thyroid cancer tissue using TA321579 (PAX8 Antibody) at dilution 1/35, treated with fusion protein. (Original magnification: ×200)