

## Product datasheet for **TA321574**

### VASP Rabbit Polyclonal Antibody

#### Product data:

Product Type:	Primary Antibodies
Applications:	IF, WB
Recommended Dilution:	WB: 1:500-1000, IF: 1:100-200
Reactivity:	Human, Rat
Host:	Rabbit
Isotype:	IgG
Clonality:	Polyclonal
Immunogen:	Peptide sequence around aa.155~159 (R-V-S-N-A) derived from Human VASP.
Formulation:	PBS pH7.3, 0.05% NaN <sub>3</sub> , 50% glycerol
Concentration:	lot specific
Purification:	Antigen affinity purification
Conjugation:	Unconjugated
Storage:	Store at -20°C as received.
Stability:	Stable for 12 months from date of receipt.
Predicted Protein Size:	40 kDa
Gene Name:	vasodilator-stimulated phosphoprotein
Database Link:	<a href="#">NP_003361</a> <a href="#">Entrez Gene 361517 RatEntrez Gene 7408 Human P50552</a>

**Background:** Vasodilator-stimulated phosphoprotein (VASP) is a member of the Ena-VASP protein family. Ena-VASP family members contain an EHV1 N-terminal domain that binds proteins containing E/DFPPPPXD/E motifs and targets Ena-VASP proteins to focal adhesions. In the mid-region of the protein, family members have a proline-rich domain that binds SH3 and WW domain-containing proteins. Their C-terminal EVH2 domain mediates tetramerization and binds both G and F actin. VASP is associated with filamentous actin formation and likely plays a widespread role in cell adhesion and motility. VASP may also be involved in the intracellular signaling pathways that regulate integrin-extracellular matrix interactions. VASP is regulated by the cyclic nucleotide-dependent kinases PKA and PKG.



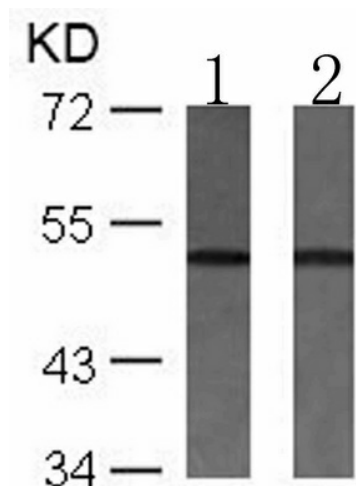
[View online »](#)

**Synonyms:** vasodilator-stimulated phosphoprotein

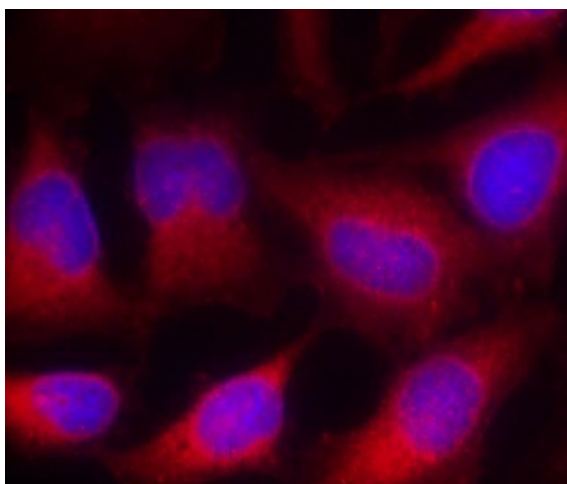
**Protein Families:** Druggable Genome, Stem cell - Pluripotency

**Protein Pathways:** Fc gamma R-mediated phagocytosis, Focal adhesion, Leukocyte transendothelial migration

**Product images:**



Predicted band size: 40 kDa. Positive control: 293 and C6 cells lysate. Recommended dilution: 1/500-1000. (Gel: 10%SDS-PAGE Lane 1, 2: 293 and C6 cells lysate Lysates: 30 ug per lane Primary antibody: 1/500 dilution Secondary antibody: Goat anti Rabbit IgG - H&L (HRP) at 1/10000 dilution Exposure time: 1 minute)



Predicted cell location: Cytoplasm. Positive control: HeLa cells. Recommended dilution: 1/100-200. The image is immunofluorescence of methanol-fixed HeLa cells using VASP antibody at dilution 1/100. (Original magnification: x200)