

Product datasheet for **TA321572**

VASP Rabbit Polyclonal Antibody

Product data:

Product Type:	Primary Antibodies
Applications:	IHC, WB
Recommended Dilution:	WB: 1:500-1000, IHC: 1:50-100
Reactivity:	Human, Mouse
Modifications:	Phospho-specific
Host:	Rabbit
Isotype:	IgG
Clonality:	Polyclonal
Immunogen:	Peptide sequence around phosphorylation site of serine 238 (K-V-S(p)-K-Q) derived from Human VASP.
Formulation:	PBS pH7.3, 0.05% NaN ₃ , 50% glycerol
Concentration:	lot specific
Purification:	Antigen affinity purification
Conjugation:	Unconjugated
Storage:	Store at -20°C as received.
Stability:	Stable for 12 months from date of receipt.
Predicted Protein Size:	40 kDa
Gene Name:	vasodilator-stimulated phosphoprotein
Database Link:	NP_003361 Entrez Gene 22323 Mouse Entrez Gene 7408 Human P50552



[View online »](#)

Background:

Ena/VASP proteins are actin-associated proteins involved in a range of processes dependent on cytoskeleton remodeling and cell polarity such as axon guidance, lamellipodial and filopodial dynamics, platelet activation and cell migration. VASP promotes actin filament elongation. It protects the barbed end of growing actin filaments against capping and increases the rate of actin polymerization in the presence of capping protein. VASP stimulates actin filament elongation by promoting the transfer of profilin-bound actin monomers onto the barbed end of growing actin filaments. Plays a role in actin-based mobility of *Listeria monocytogenes* in host cells. Regulates actin dynamics in platelets and plays an important role in regulating platelet aggregation.

Synonyms:

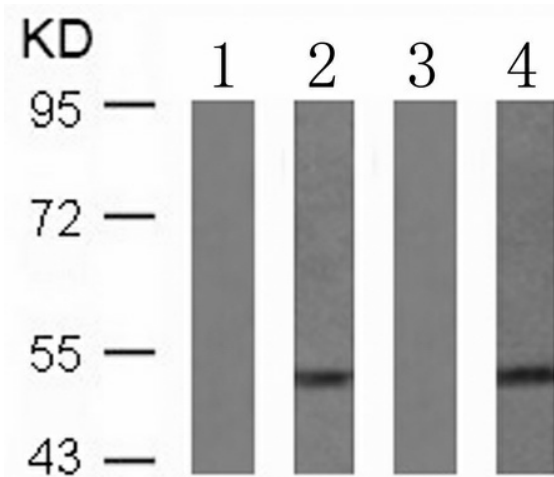
vasodilator-stimulated phosphoprotein

Protein Families:

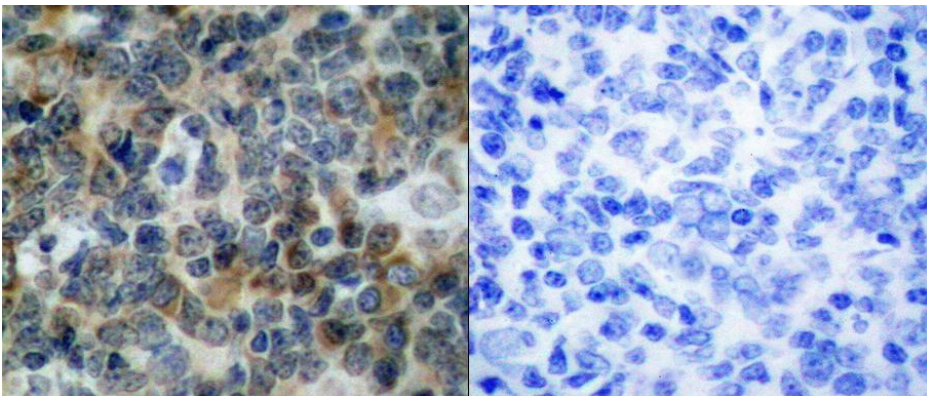
Druggable Genome, Stem cell - Pluripotency

Protein Pathways:

Fc gamma R-mediated phagocytosis, Focal adhesion, Leukocyte transendothelial migration

Product images:

Predicted band size: 40 kDa. Positive control: Serum-treated 293 and PMA-treated C6 cells lysate. Recommended dilution: 1/ 500-1000. (Gel: 10%SDS-PAGE Lane 1, 3: Serum-untreated 293 and PMA-untreated C6 cells lysate Lane 2, 4: Serum-treated 293 and PMA-treated C6 cells lysate Lysates: 30 ug per lane lysate Primary antibody: 1/500 dilution Secondary antibody: Goat anti Rabbit IgG - H&L (HRP) at 1/10000 dilution Exposure time: 1 minute)



Predicted cell location: Cytoplasm. Positive control: Human tonsil carcinoma tissue. Recommended dilution: 1/ 50-100 The image on the left is immunohistochemistry of paraffin-embedded human tonsil carcinoma tissue using VASP (Phospho-Ser239) antibody at dilution 1/50, on the right is treated with the synthetic peptide. (Original magnification:x200)