

Product datasheet for **TA321569**

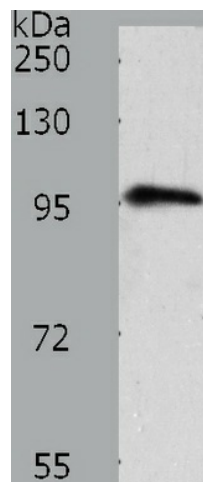
TRPC3 Rabbit Polyclonal Antibody

Product data:

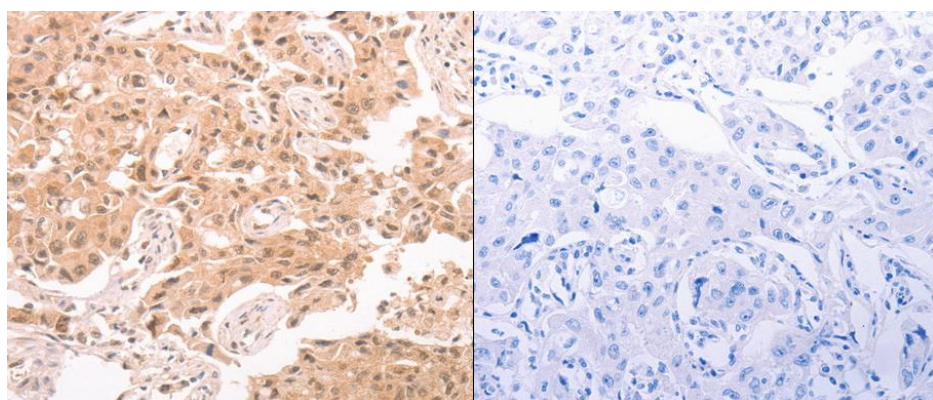
| | |
|-------------------------|--|
| Product Type: | Primary Antibodies |
| Applications: | IHC, WB |
| Recommended Dilution: | ELISA: 1:2000-10000, WB: 1:1000-5000, IHC: 1:100-300 |
| Reactivity: | Human, Mouse, Rat |
| Host: | Rabbit |
| Isotype: | IgG |
| Clonality: | Polyclonal |
| Immunogen: | Synthetic peptide corresponding to a region derived from 834-846 amino acids of human transient receptor potential cation channel, subfamily C, member 3 |
| Formulation: | PBS pH7.3, 0.05% NaN ₃ , 50% glycerol |
| Concentration: | lot specific |
| Purification: | Antigen affinity purification |
| Conjugation: | Unconjugated |
| Storage: | Store at -20°C as received. |
| Stability: | Stable for 12 months from date of receipt. |
| Predicted Protein Size: | 97 kDa |
| Gene Name: | transient receptor potential cation channel subfamily C member 3 |
| Database Link: | NP_003296 Entrez Gene 22065 Mouse Entrez Gene 60395 Rat Entrez Gene 7222 Human Q13507 |
| Background: | The protein encoded by this gene is a membrane protein that can form a non-selective channel permeable to calcium and other cations. The encoded protein appears to be induced to form channels by a receptor tyrosine kinase-activated phosphatidylinositol second messenger system and also by depletion of intracellular calcium stores. Two transcript variants encoding different isoforms have been found for this gene. |
| Synonyms: | SCA41; TRP3 |
| Protein Families: | Druggable Genome, Ion Channels: Transient receptor potential, Transmembrane |



[View online »](#)

Product images:

Predicted band size: 97 kDa. Positive control: Human fetal brain tissue lysate. Recommended dilution: 1/1000-5000. (Gel: 8%SDS-PAGE Lysate: 40 ug per lane Primary antibody: 1/1600 dilution Secondary antibody: Goat anti Rabbit IgG - H&L (HRP) at 1/10000 dilution Exposure time: 2 minutes)



Predicted cell location: Cytoplasm or Nucleus. Positive control: Human lung cancer tissue. Recommended dilution: 1/100-300 The image on the left is immunohistochemistry of paraffin-embedded human lung cancer tissue using TRPC3 antibody at dilution 1/80, on the right is treated with the synthetic peptide. (Original magnification:x200)